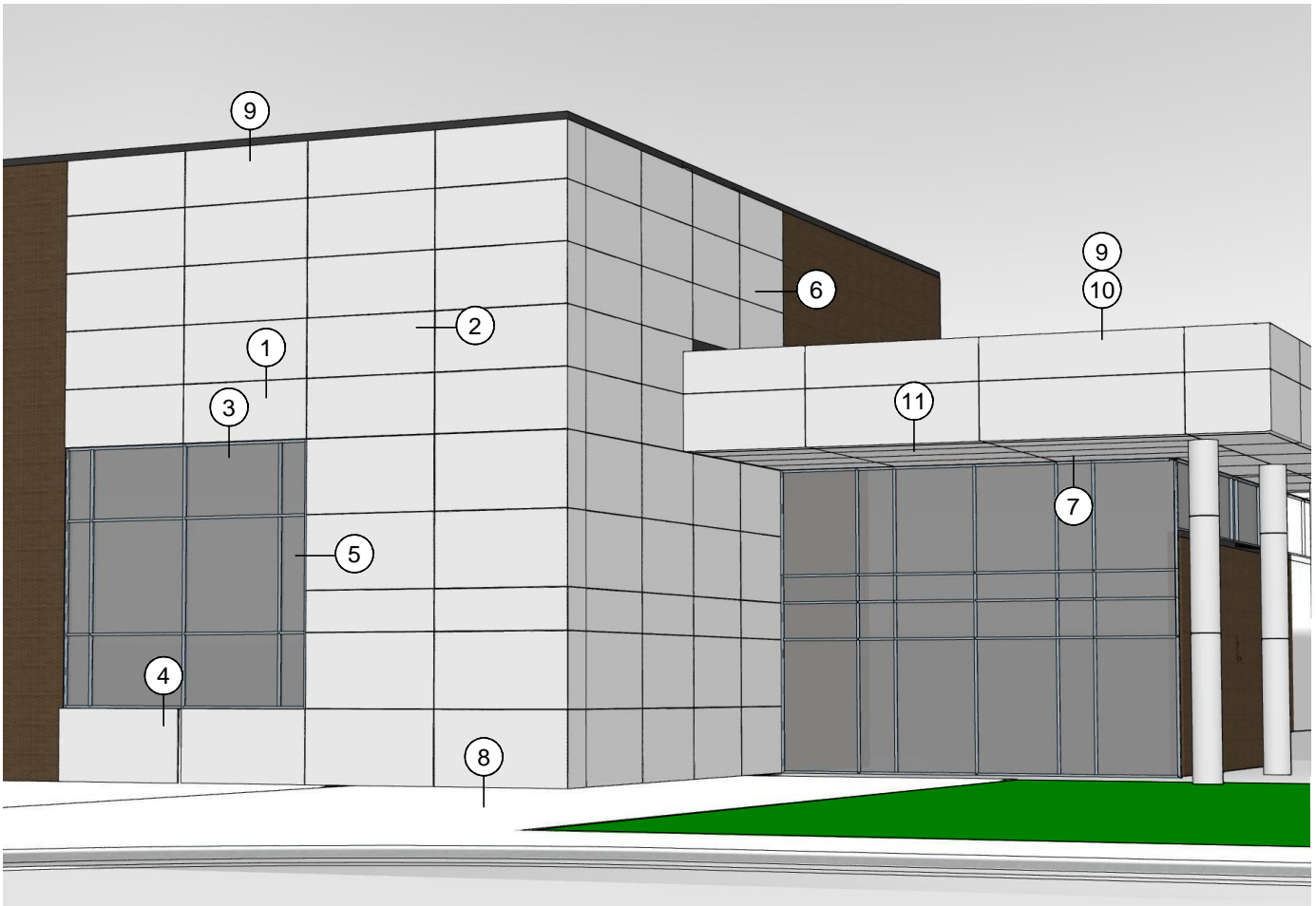


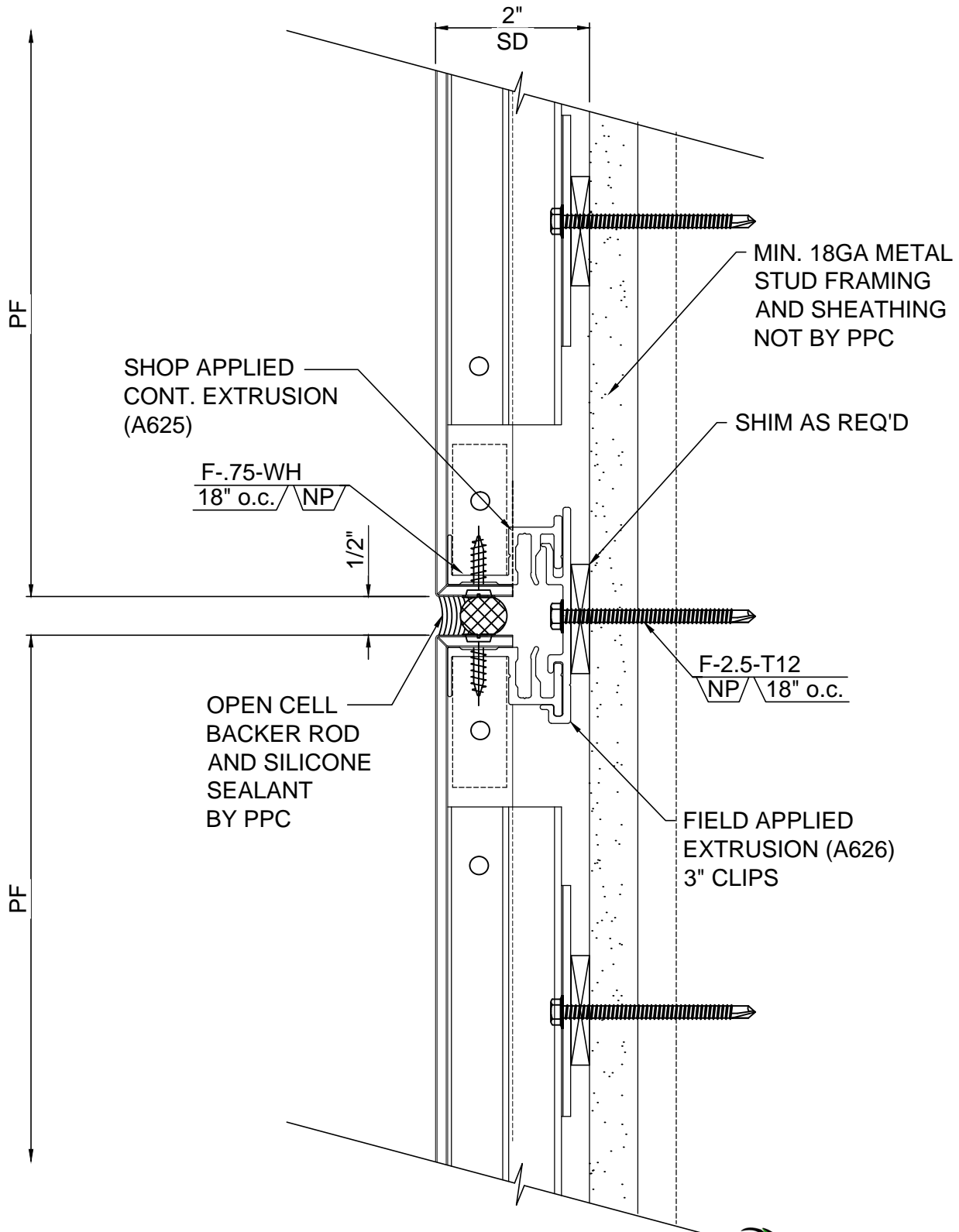
SPEC: 074213.23

METAL COMPOSITE WALL PANELS EXPOSED SEALANT SYSTEM PPC ES-600

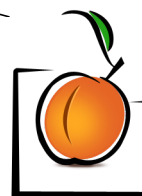


DETAIL REFERENCE





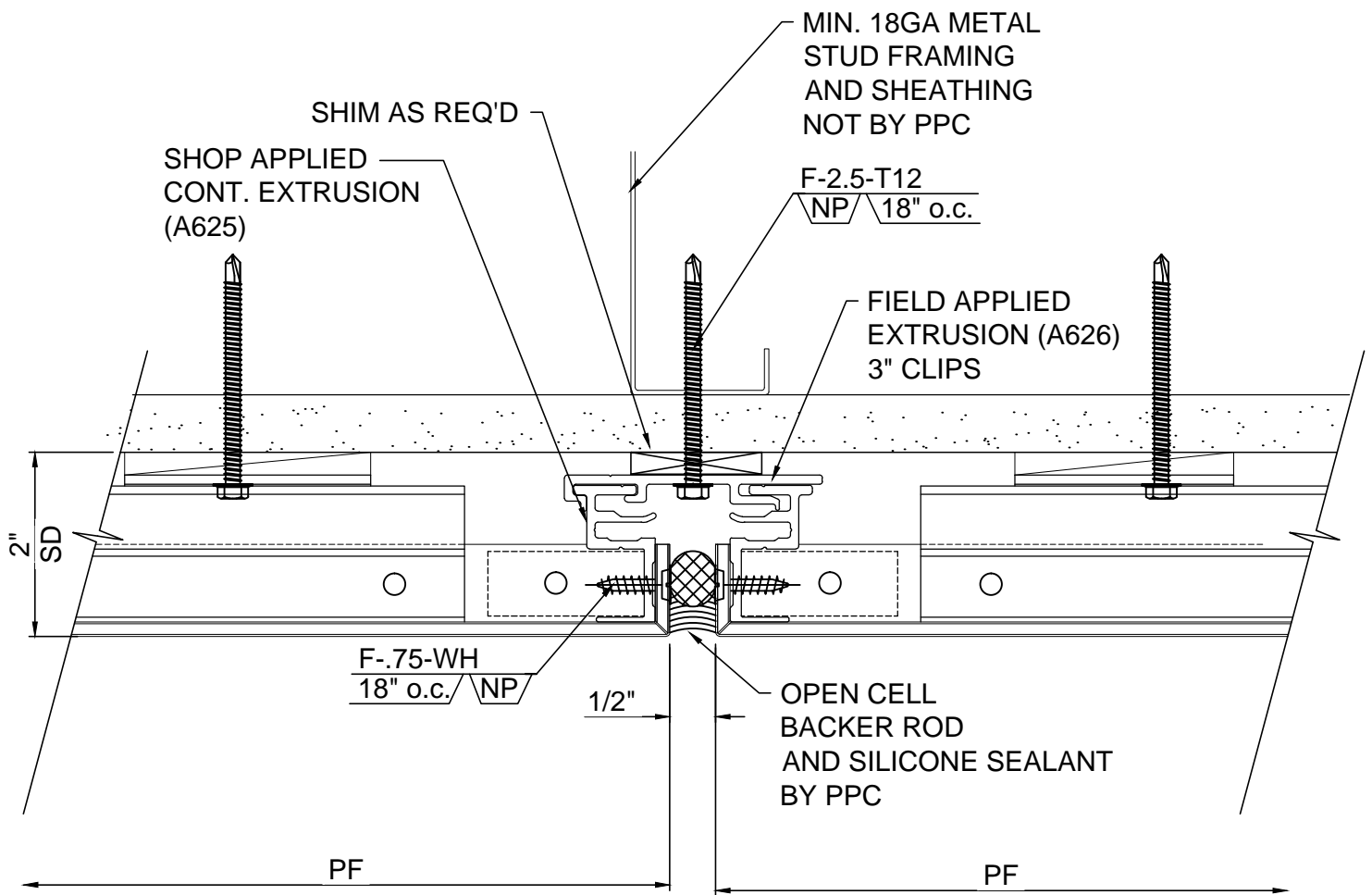
MATERIAL: 4mm ACM	SYSTEM TYPE: PPC-ES-600
DRAWING NO. 1	DETAIL: TYPICAL HORIZONTAL JOINT



Peachtree
PROTECTIVE COVERS

DATE: 11.22.13

1477 ROSEDALE DRIVE • HIRAM, GA 30141 • PHONE (770) 439-2120 • FAX (770) 439-2122

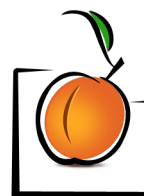


MATERIAL:
4mm ACM

SYSTEM TYPE:
PPC-ES-600

DRAWING NO.
2

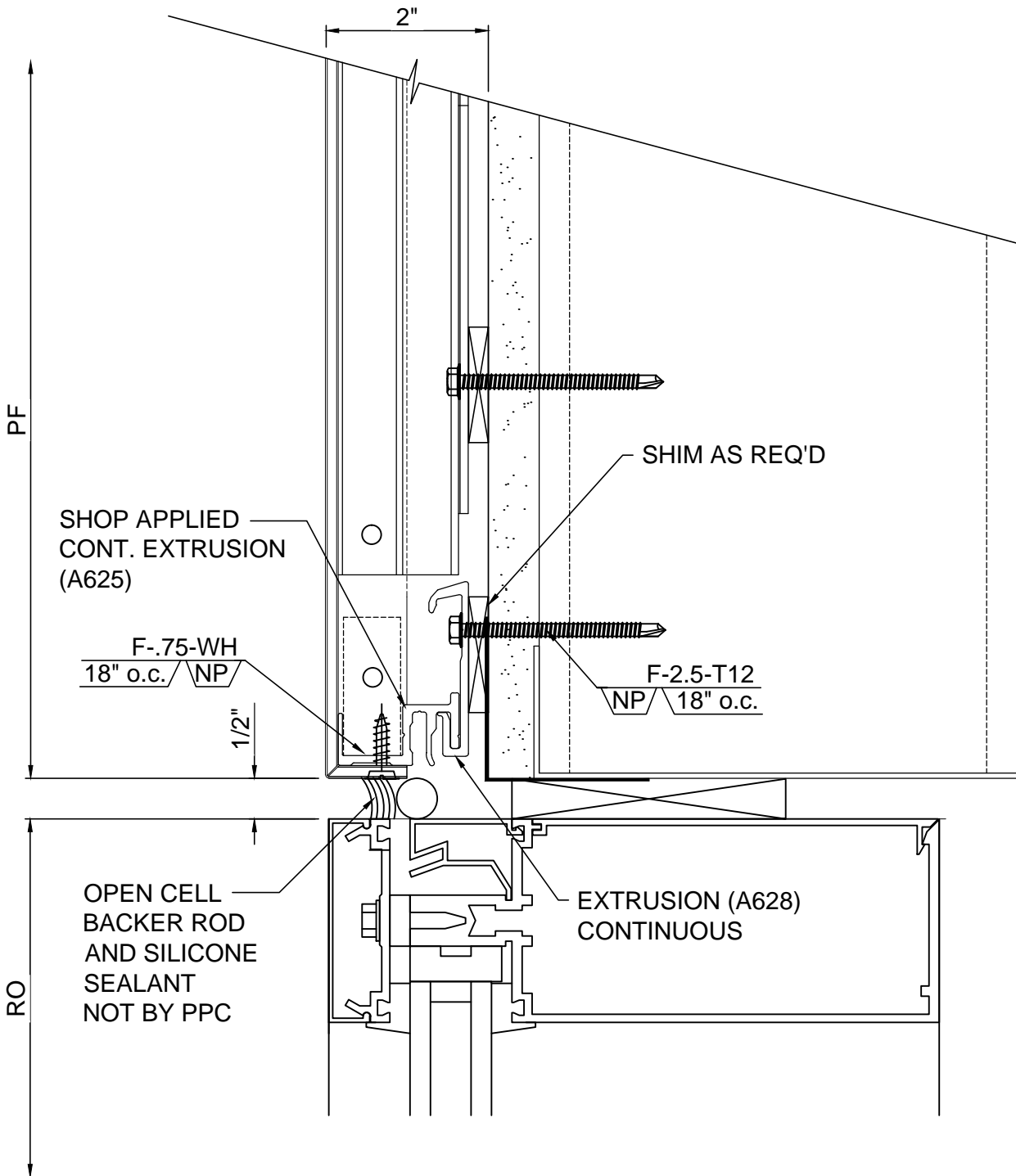
DETAIL:
TYPICAL VERTICAL JOINT



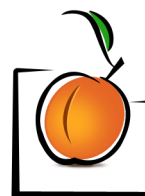
Peachtree
PROTECTIVE COVERS

DATE: 11.22.13

1477 ROSEDALE DRIVE • HIRAM, GA 30141 • PHONE (770) 439-2120 • FAX (770) 439-2122



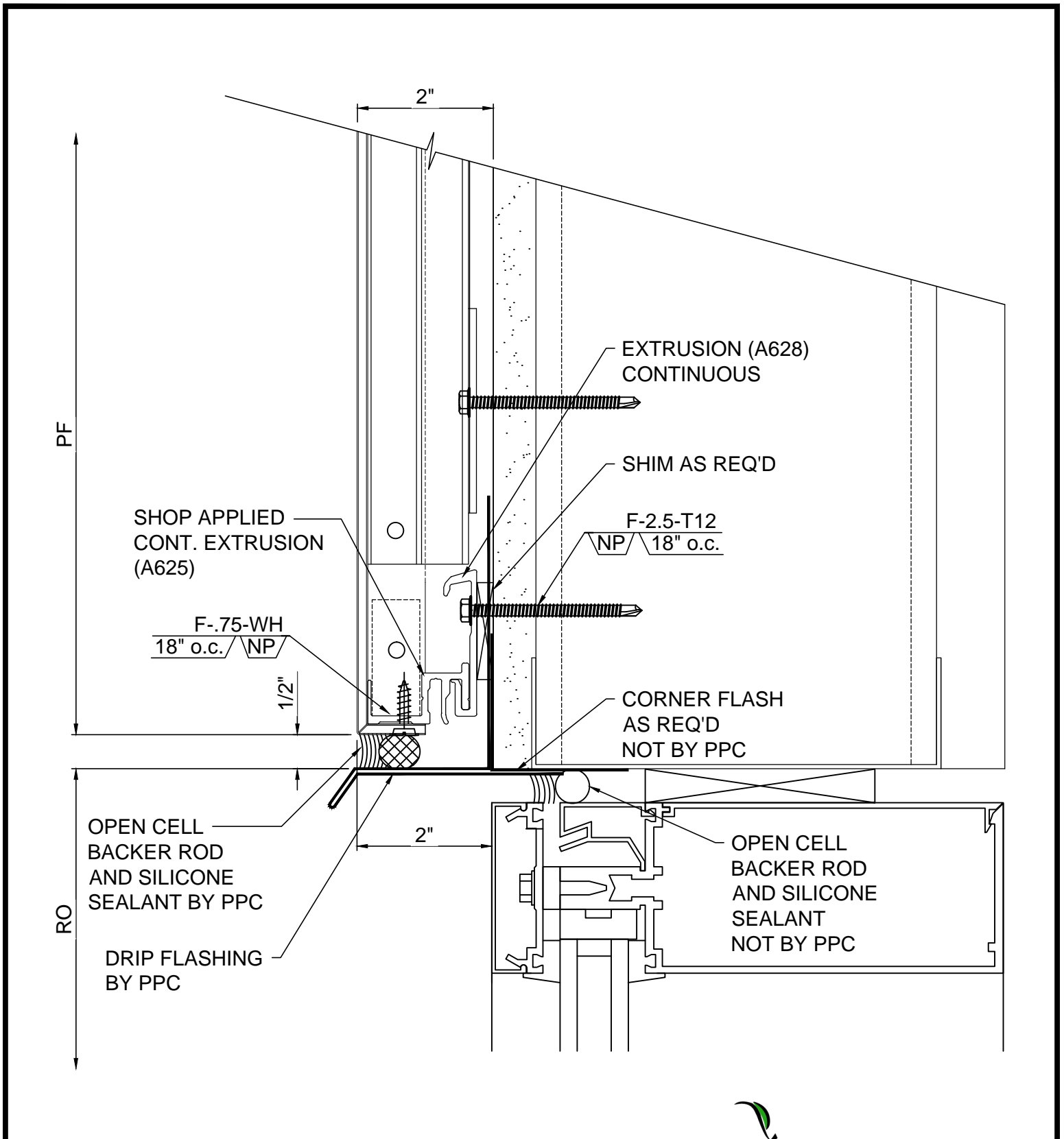
MATERIAL: 4mm ACM	SYSTEM TYPE: PPC-ES-600
DRAWING NO. 3	DETAIL: HEAD DETAIL AT CURTAIN WALL



Peachtree
PROTECTIVE COVERS

DATE: 11.22.13

1477 ROSEDALE DRIVE • HIRAM, GA 30141 • PHONE (770) 439-2120 • FAX (770) 439-2122



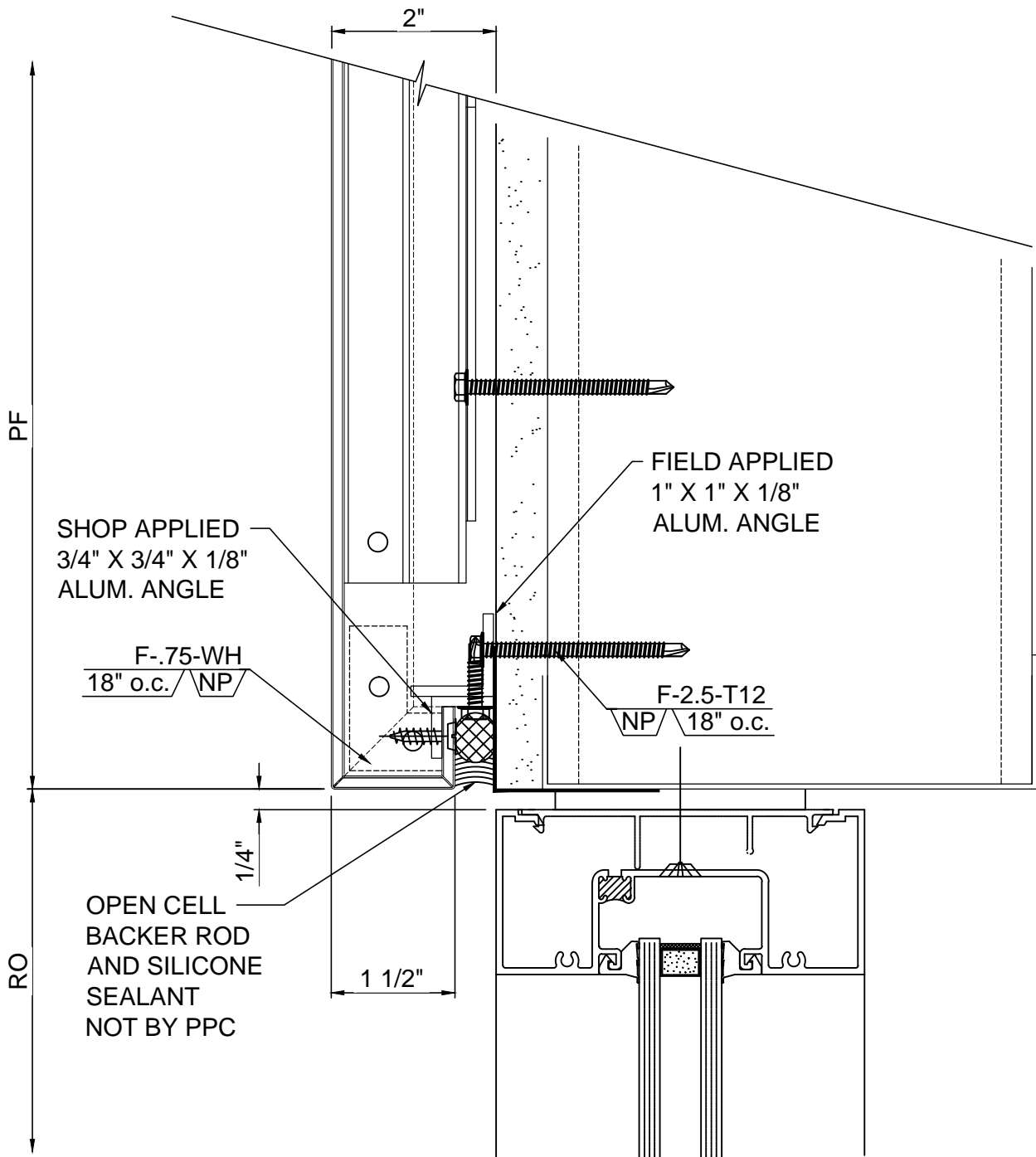
MATERIAL: 4mm ACM	SYSTEM TYPE: PPC-ES-600
DRAWING NO. 3A	DETAIL: HEAD DETAIL AT CURTAIN WALL



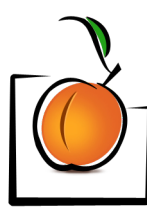
Peachtree
PROTECTIVE COVERS

DATE: 11.22.13

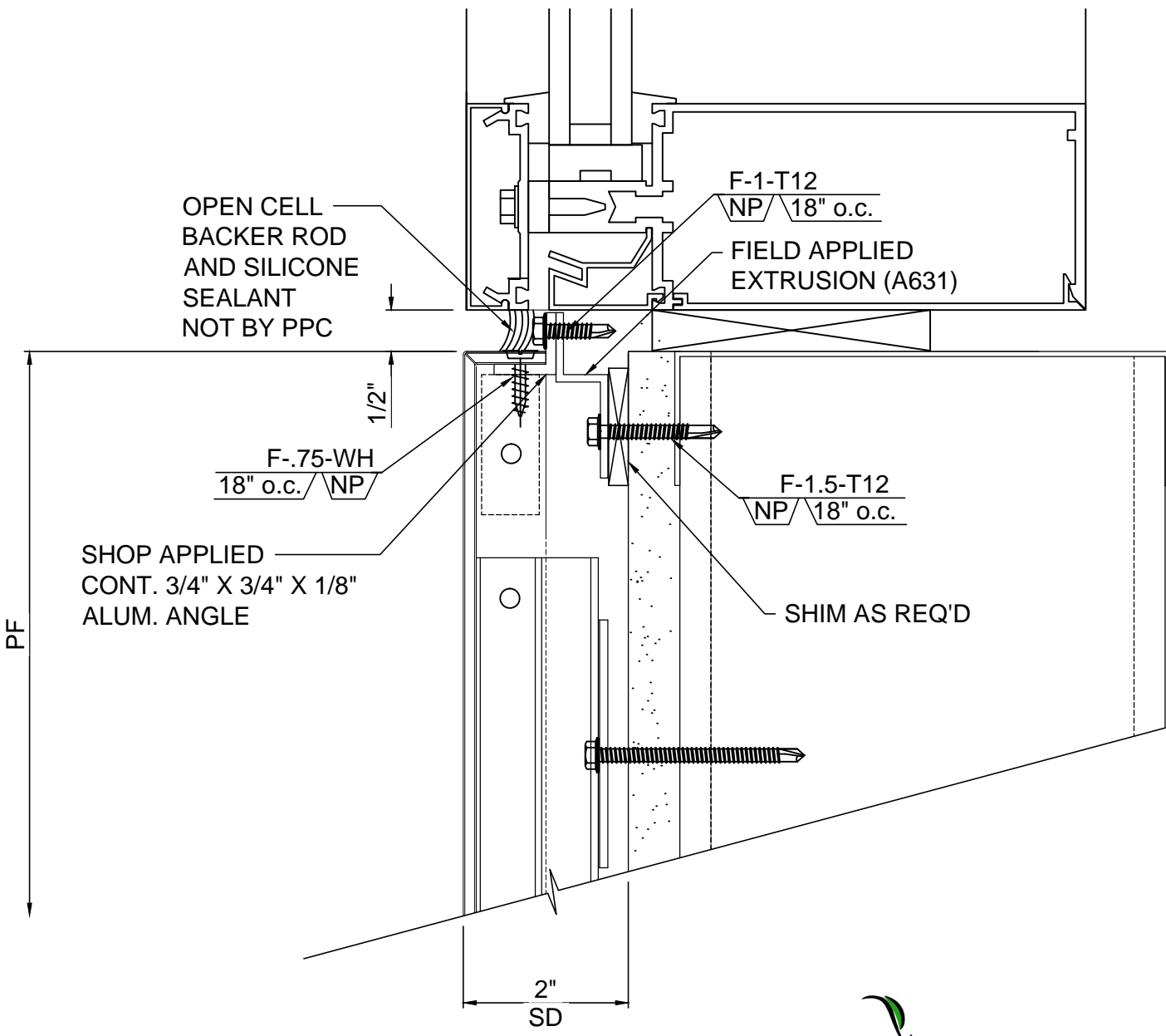
1477 ROSEDALE DRIVE • HIRAM, GA 30141 • PHONE (770) 439-2120 • FAX (770) 439-2122



MATERIAL: 4mm ACM	SYSTEM TYPE: PPC-ES-600
DRAWING NO. 3B	DETAIL: HEAD DETAIL AT STORE FRONT



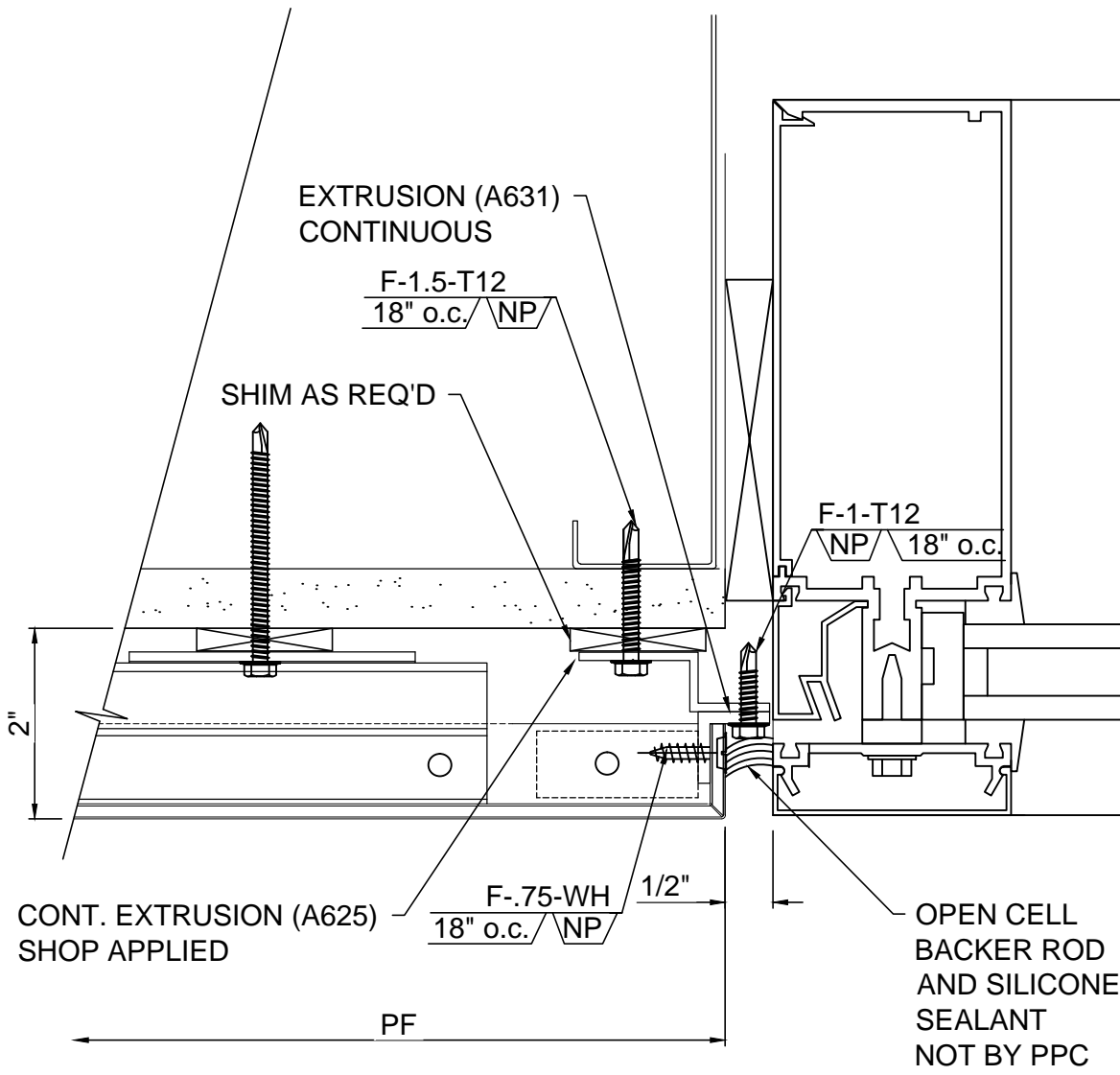
Peachtree
PROTECTIVE COVERS



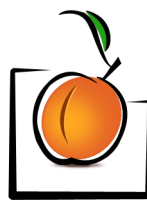
MATERIAL: 4mm ACM	SYSTEM TYPE: PPC-ES-600
DRAWING NO. 4	DETAIL: SILL DETAIL AT CURTAIN WALL



DATE: 11.22.13 1477 ROSEDALE DRIVE • HIRAM, GA 30141 • PHONE (770) 439-2120 • FAX (770) 439-2122



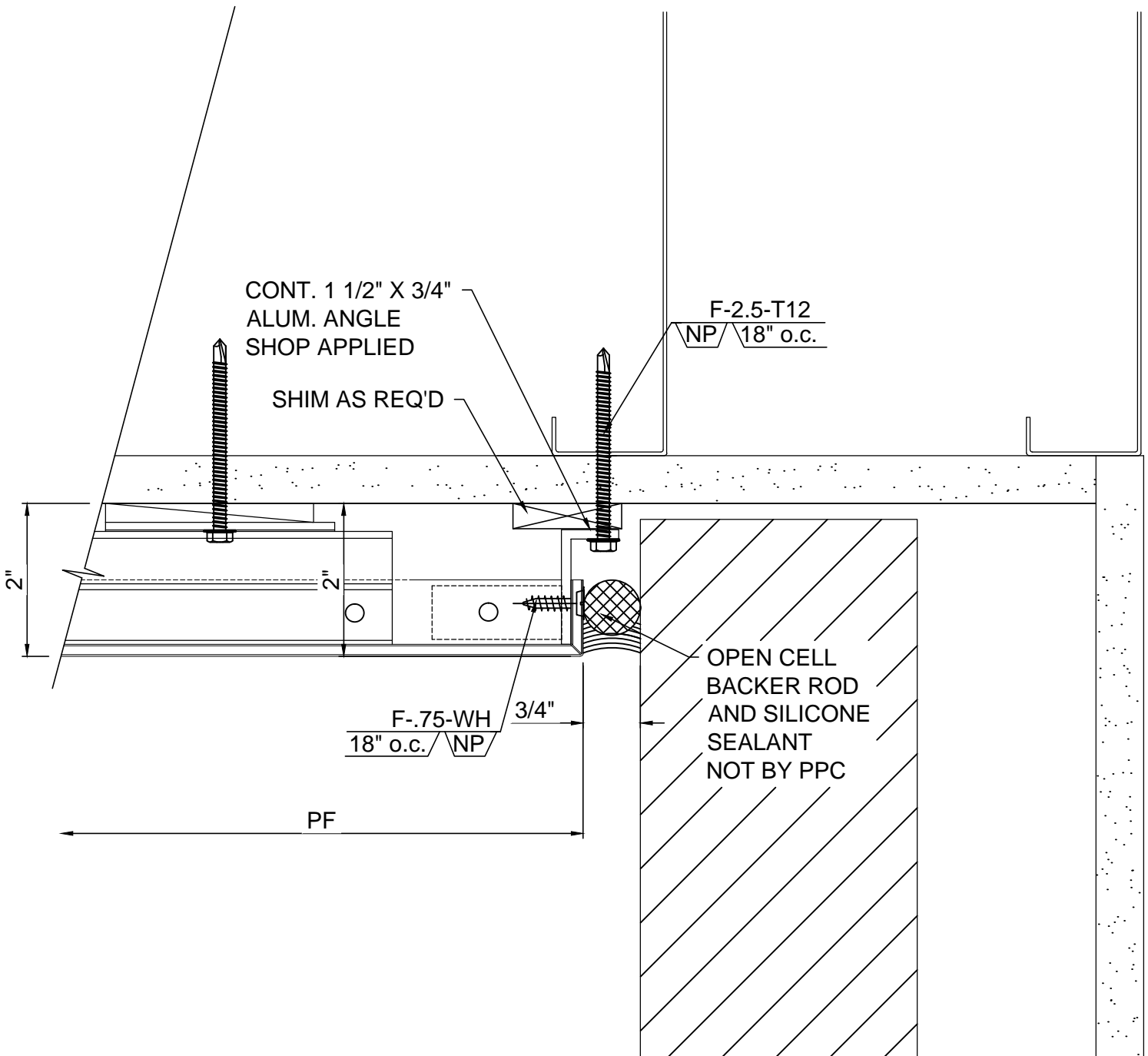
MATERIAL: 4mm ACM	SYSTEM TYPE: PPC-ES-600
DRAWING NO. 5	DETAIL: JAMB DETAIL



Peachtree
PROTECTIVE COVERS

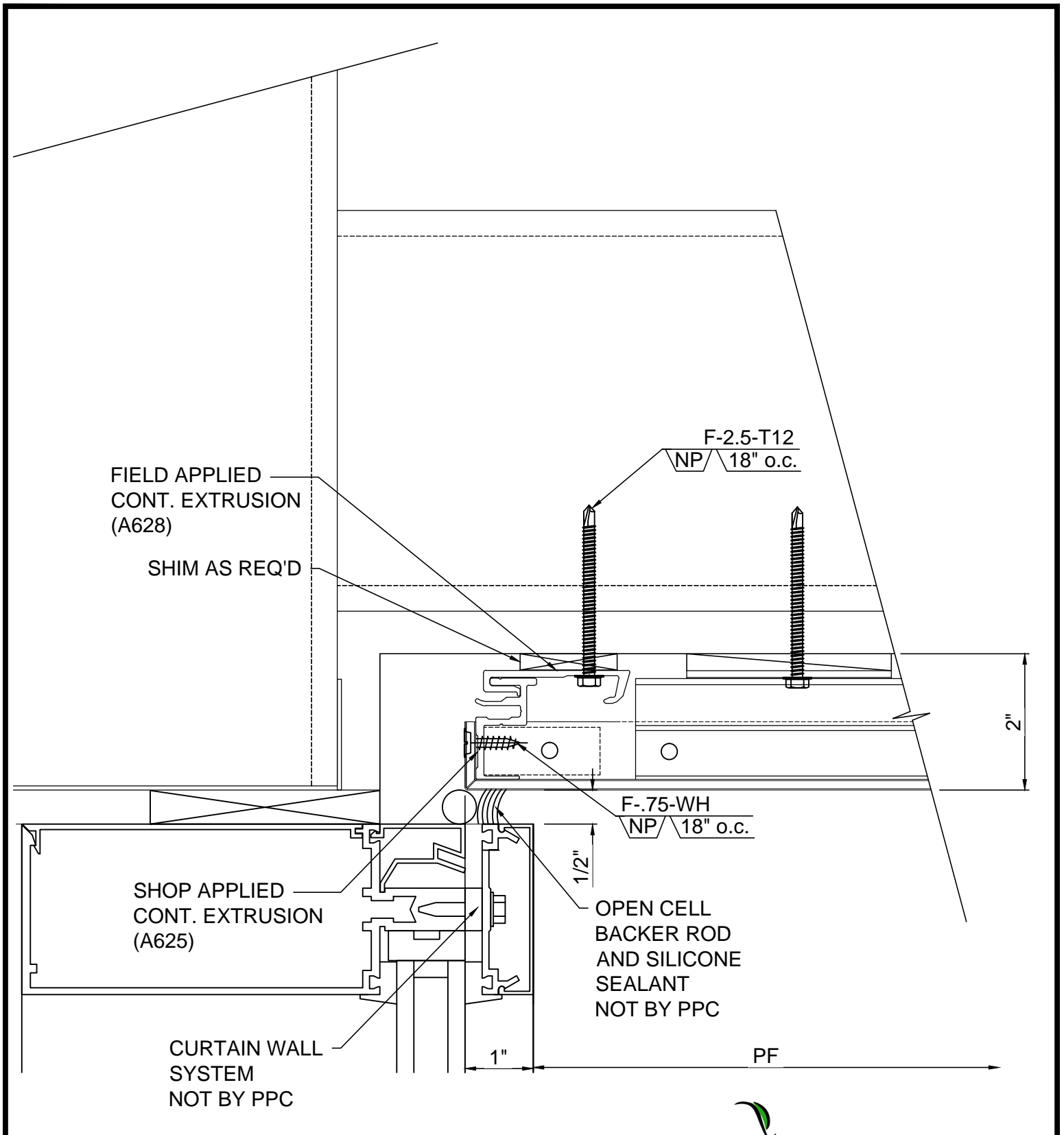
DATE: 11.22.13

1477 ROSEDALE DRIVE • HIRAM, GA 30141 • PHONE (770) 439-2120 • FAX (770) 439-2122

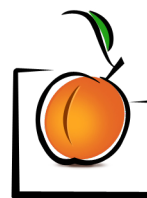


MATERIAL: 4mm ACM	SYSTEM TYPE: PPC-ES-600
DRAWING NO. 6	DETAIL: TERMINATION DETAIL



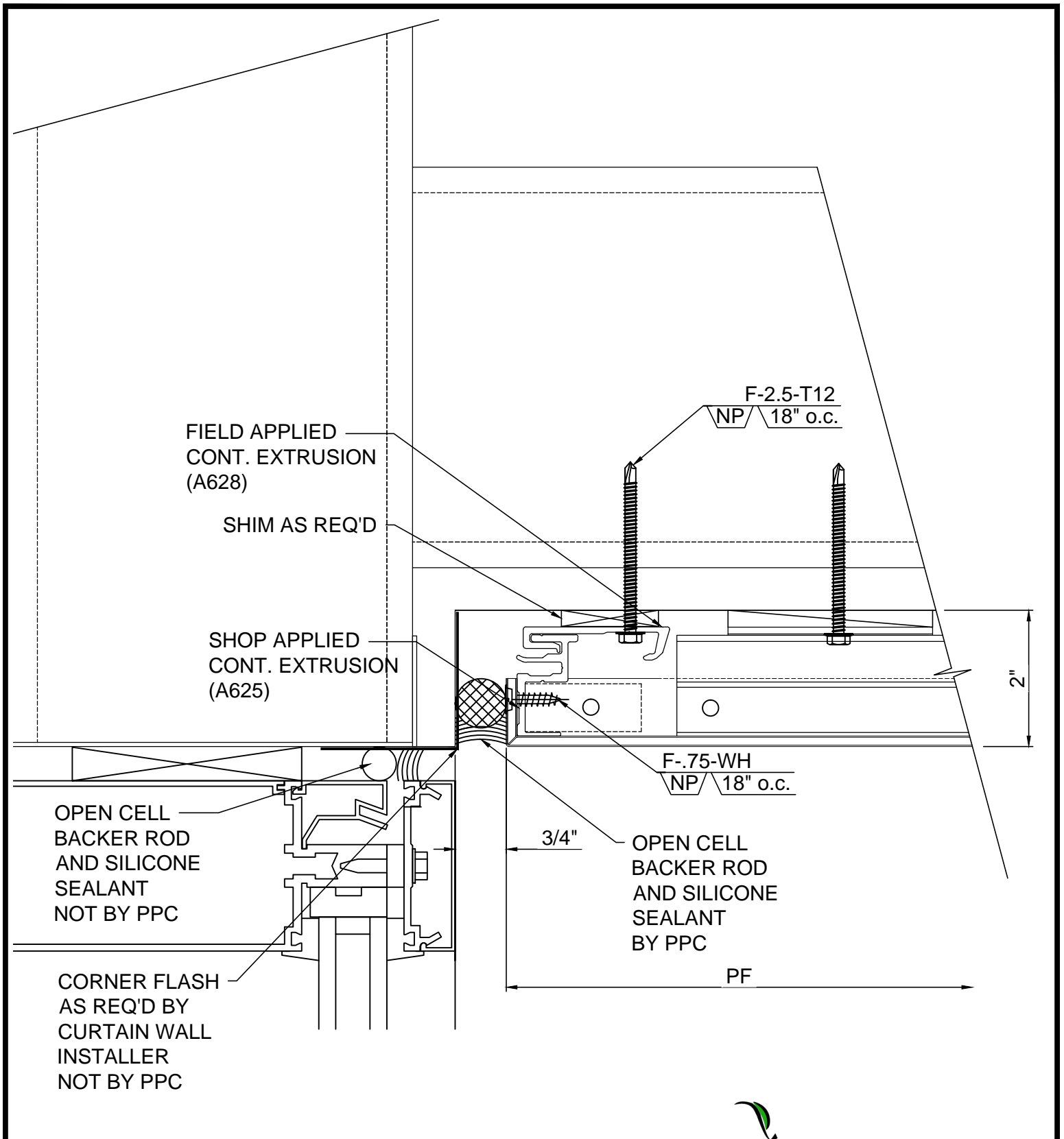


MATERIAL: 4mm ACM	SYSTEM TYPE: PPC-ES-600
DRAWING NO. 7	DETAIL: SOFFIT DETAIL PANEL OVER CURTAIN WALL HEAD



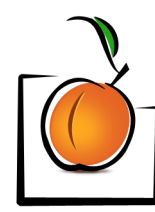
Peachtree
PROTECTIVE COVERS

1477 ROSEDALE DRIVE • HIRAM, GA 30141 • PHONE (770) 439-2120 • FAX (770) 439-2122



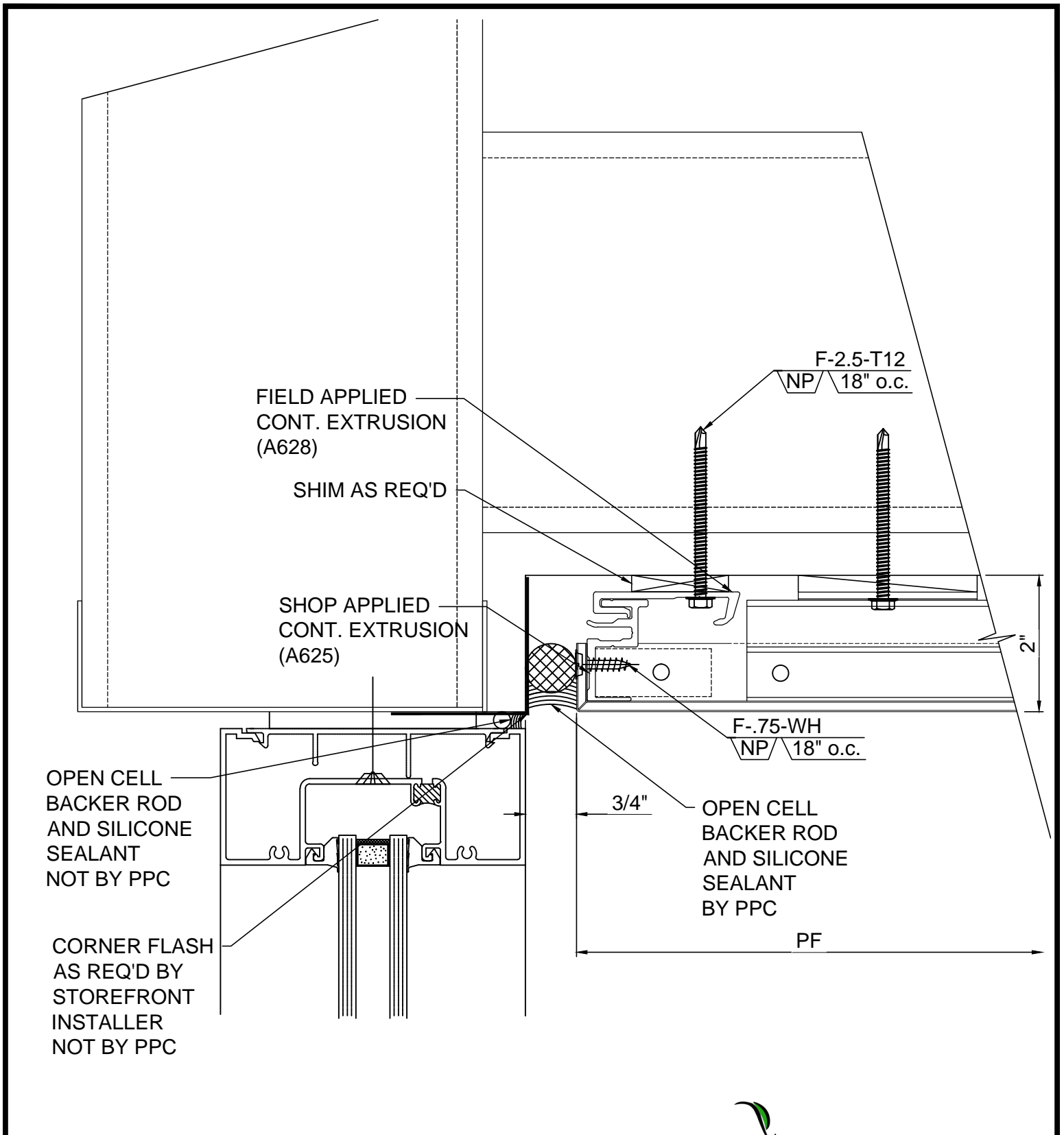
MATERIAL: 4mm ACM	SYSTEM TYPE: PPC-ES-600
DRAWING NO. 7A	DETAIL: SOFFIT DETAIL AT CURTAIN WALL HEAD

DATE: 11.22.13



Peachtree
PROTECTIVE COVERS

1477 ROSEDALE DRIVE • HIRAM, GA 30141 • PHONE (770) 439-2120 • FAX (770) 439-2122

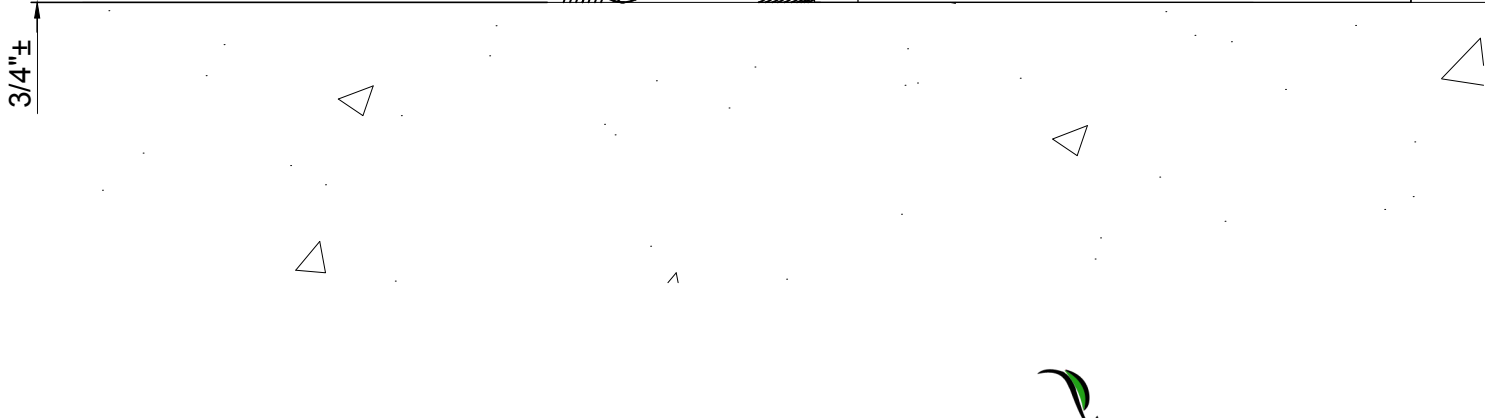
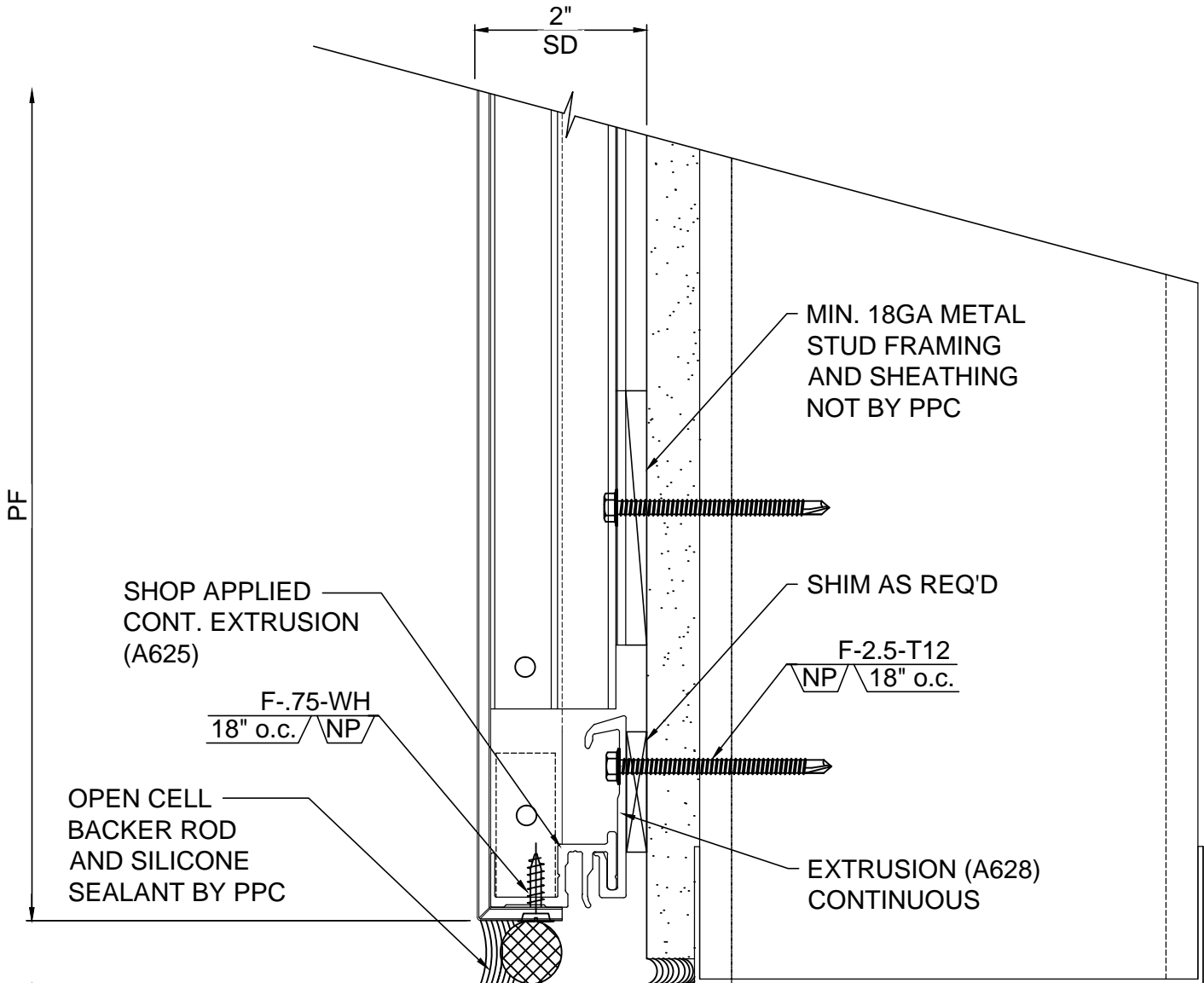


MATERIAL: 4mm ACM	SYSTEM TYPE: PPC-ES-600
DRAWING NO. 7B	DETAIL: SOFFIT DETAIL AT STORE FRONT HEAD

DATE: 11.22.13

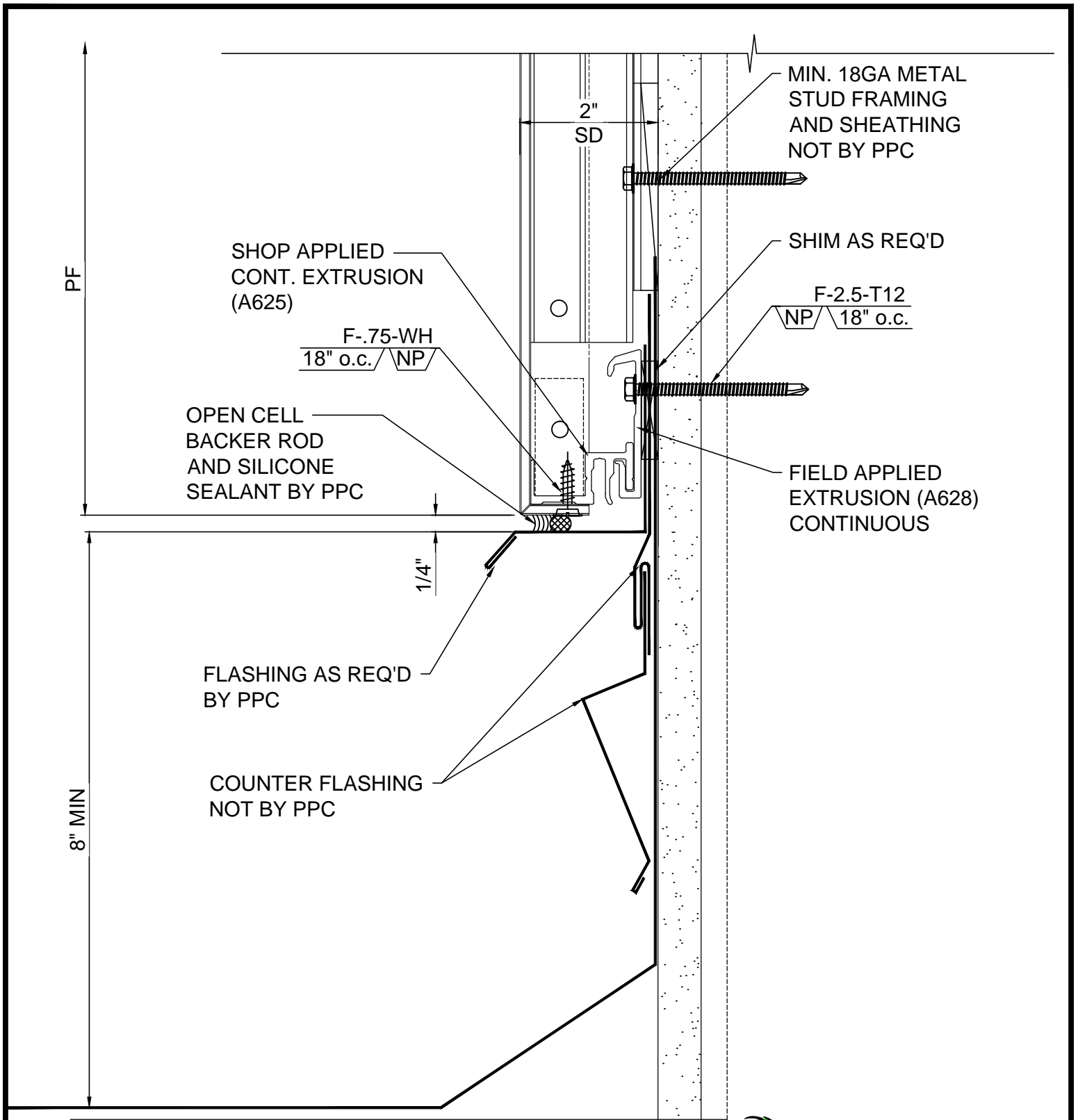


1477 ROSEDALE DRIVE • HIRAM, GA 30141 • PHONE (770) 439-2120 • FAX (770) 439-2122

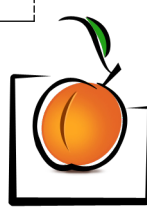


MATERIAL: 4mm ACM	SYSTEM TYPE: PPC-ES-600
DRAWING NO. 8	DETAIL: BASE DETAIL

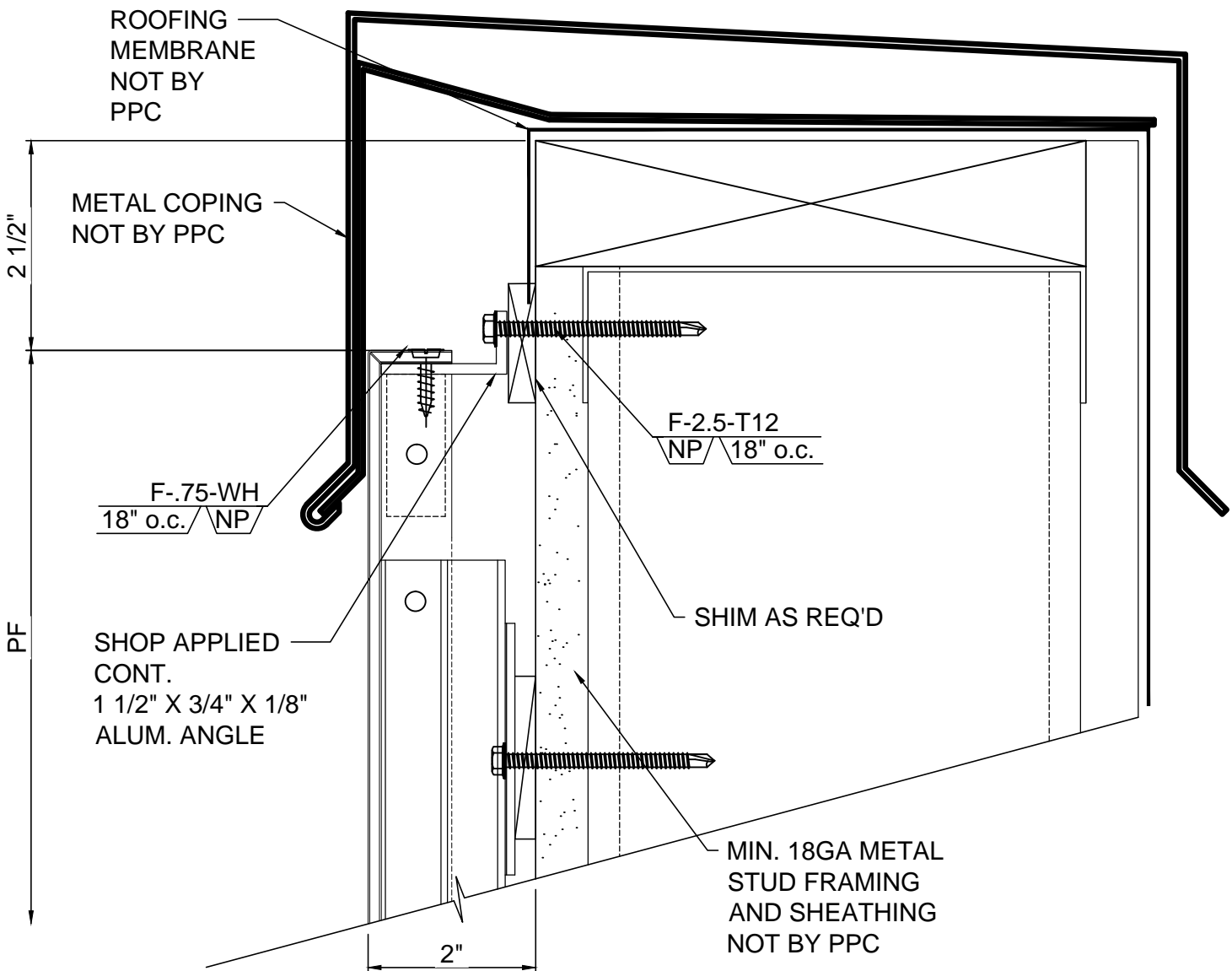




MATERIAL: 4mm ACM	SYSTEM TYPE: PPC-ES-600
DRAWING NO. 8A	DETAIL: BASE DETAIL AT ROOF

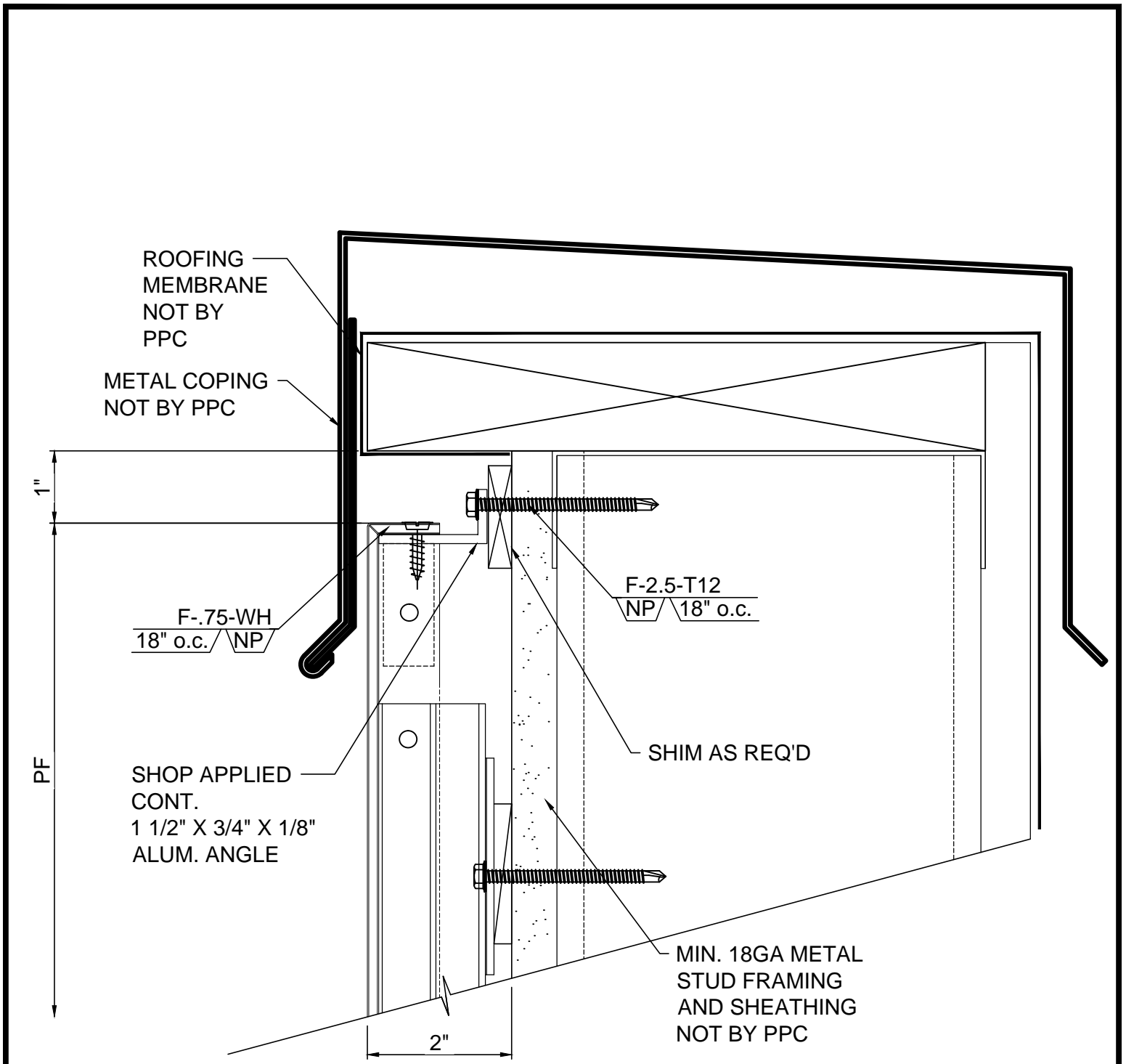


Peachtree
PROTECTIVE COVERS



MATERIAL: 4mm ACM	SYSTEM TYPE: PPC-ES-600
DRAWING NO. 9	DETAIL: COPING DETAIL





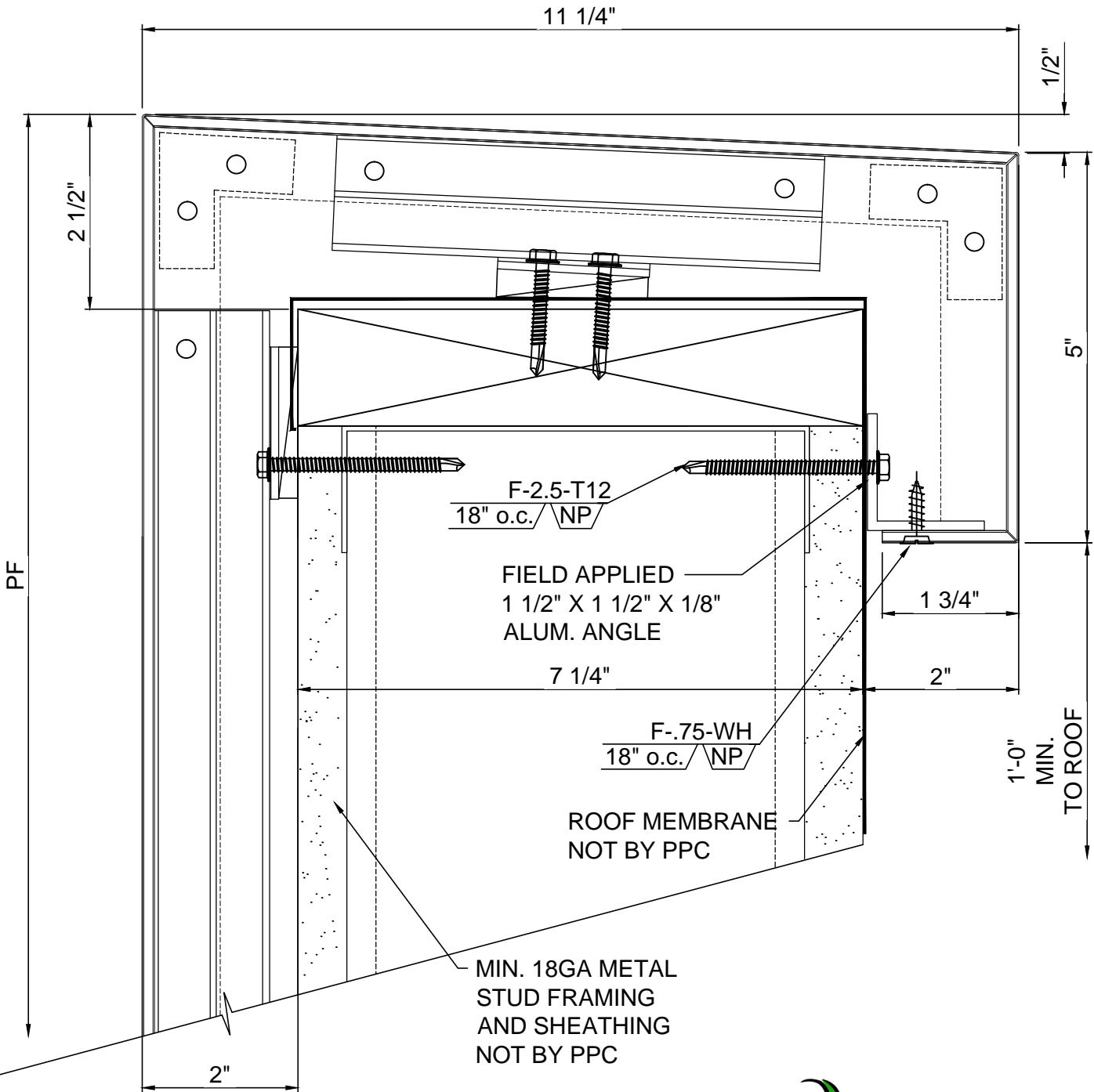
MATERIAL: 4mm ACM	SYSTEM TYPE: PPC-ES-600
DRAWING NO. 9A	DETAIL: COPING DETAIL



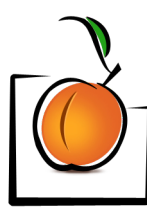
Peachtree
PROTECTIVE COVERS

DATE: 11.22.13

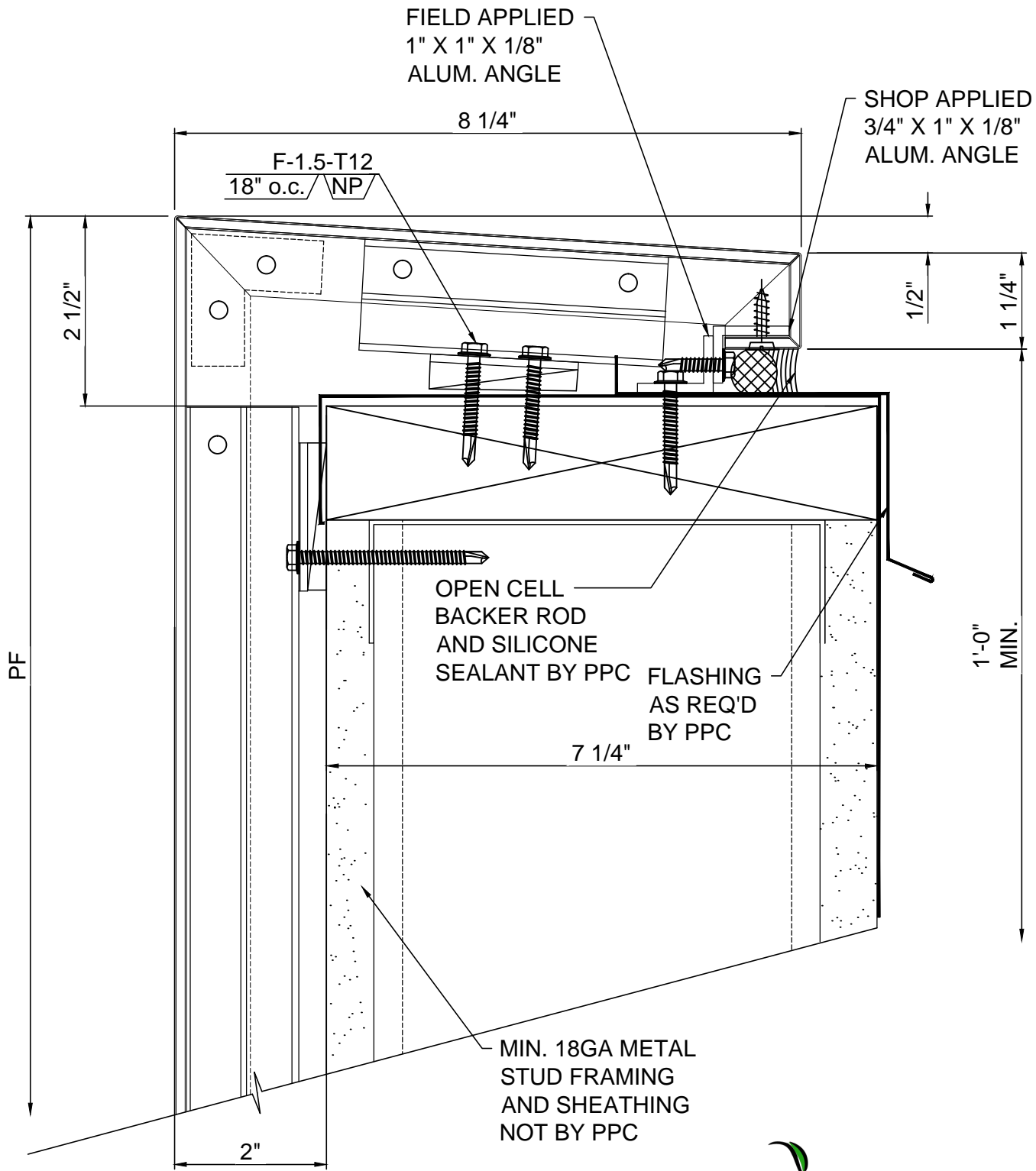
1477 ROSEDALE DRIVE • HIRAM, GA 30141 • PHONE (770) 439-2120 • FAX (770) 439-2122



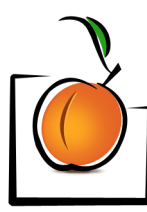
MATERIAL: 4mm ACM	SYSTEM TYPE: PPC-ES-600
DRAWING NO. 10	DETAIL: ACM PARAPET DETAIL



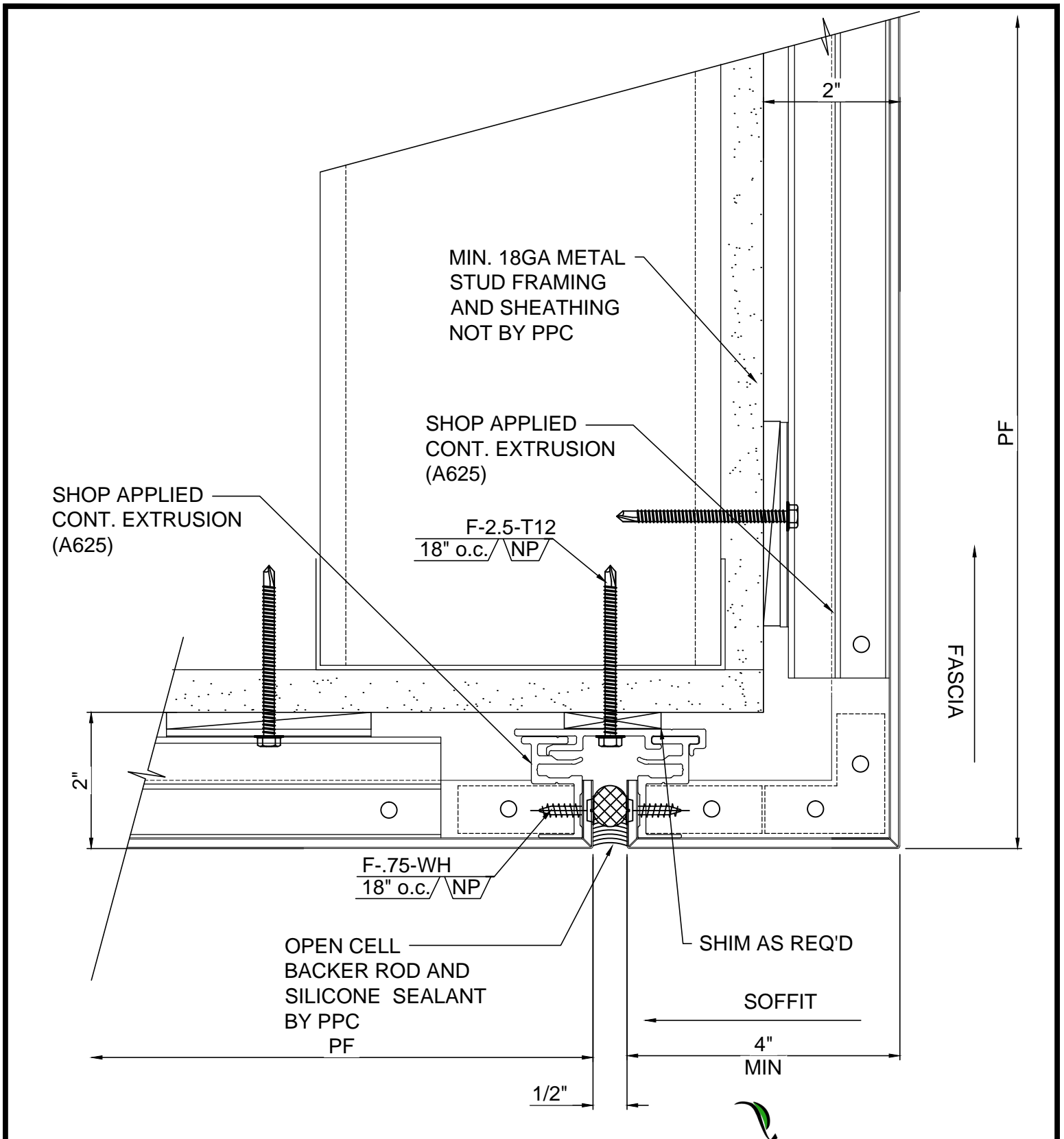
Peachtree
PROTECTIVE COVERS



MATERIAL: 4mm ACM	SYSTEM TYPE: PPC-ES-600
DRAWING NO. 10A	DETAIL: ACM PARAPET DETAIL



Peachtree
PROTECTIVE COVERS



MATERIAL: 4mm ACM	SYSTEM TYPE: PPC-ES-600
DRAWING NO. 11	DETAIL: SOFFIT / FASCIA DETAIL



Peachtree
PROTECTIVE COVERS