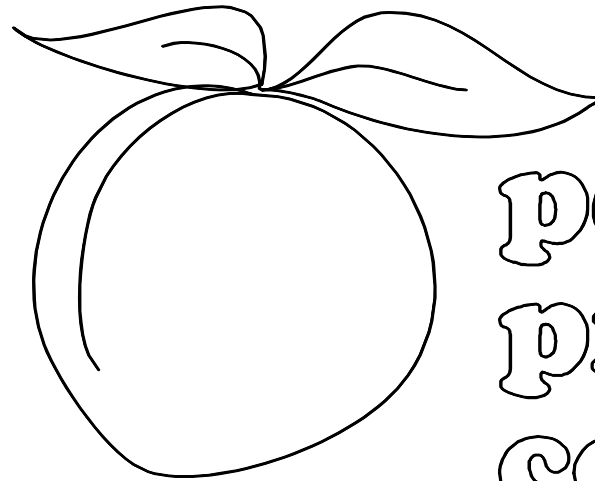


REVISION HISTORY	
DATE	DESCRIPTION
12/21/06	1ST SUBMITTAL
12/21/07	INITIAL F&F
1/31/08	FINAL F&F

JOB # 4022



peachtree  
protective  
covers

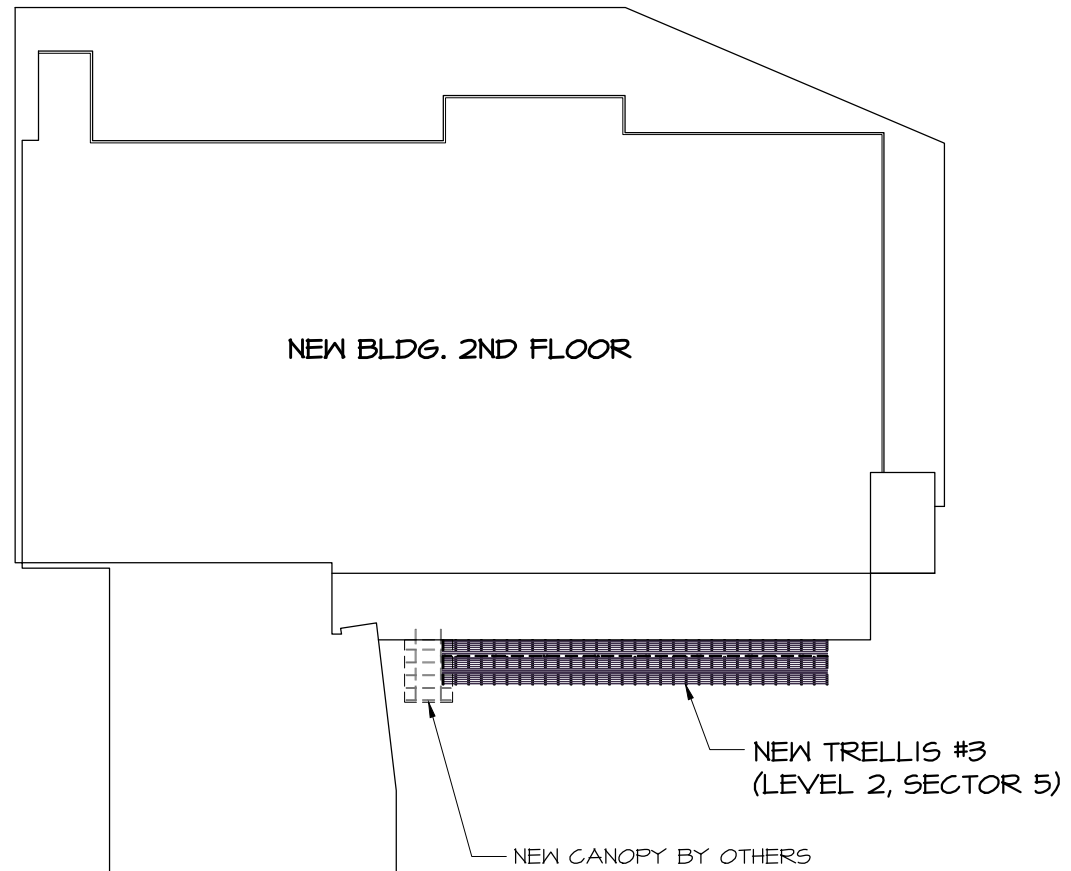
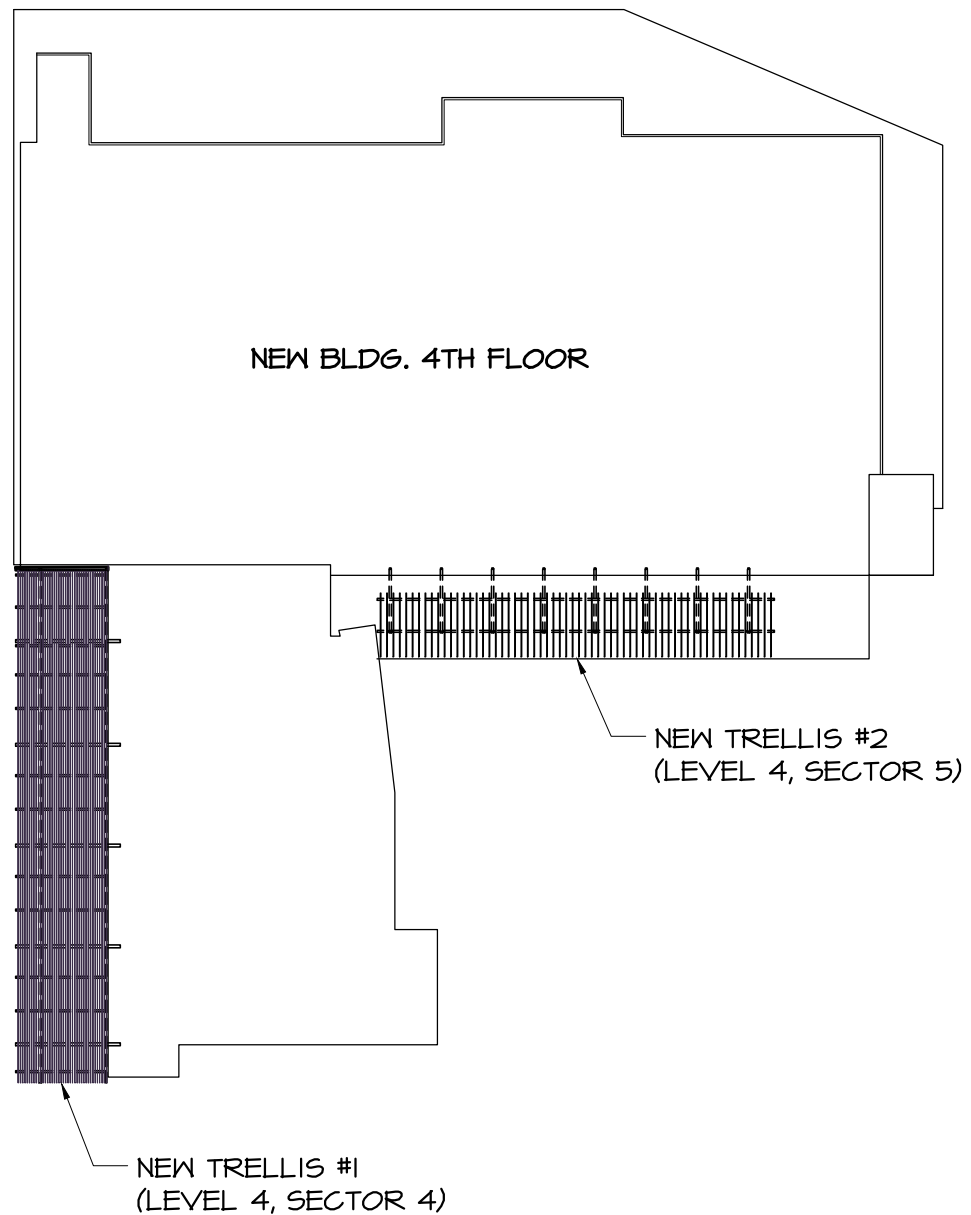
GEORGIA TECH  
NANOTECHNOLOGY RESEARCH  
CENTER  
ATLANTA, GA  
BY

M & W ZANDER US OPERATIONS INC.

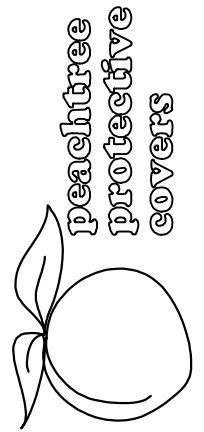
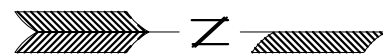
JANUARY 31, 2008

1477 ROSEDALE DRIVE  
HIRAM, GA 30141  
(770) 439-2120  
fax (770) 439-2122

Drawing: 4022-FF.dwg Layout: 4022-IR2  
 Saved: 8/12/06 4:45am By: rvenable



**KEY PLAN**  
 N.T.S.



1477 ROSEDALE DRIVE PHONE (770) 434-2120  
 HIRAM, GA 30141 FAX (770) 434-2122

GEORGIA TECH NANOTECHNOLOGY  
 JOB NAME: RESEARCH CENTER  
 LOCATION: ATLANTA, GA  
 ARCHITECT: M & W ZANDER US OPERATIONS INC.  
 CONTRACTOR: THE WHITING-TURNER CONTRACTING COMPANY

**REVISIONS**

10/21/07 RV	

DRAWN: RLV

SCALE: AS SHOWN

DATE: 12/21/06

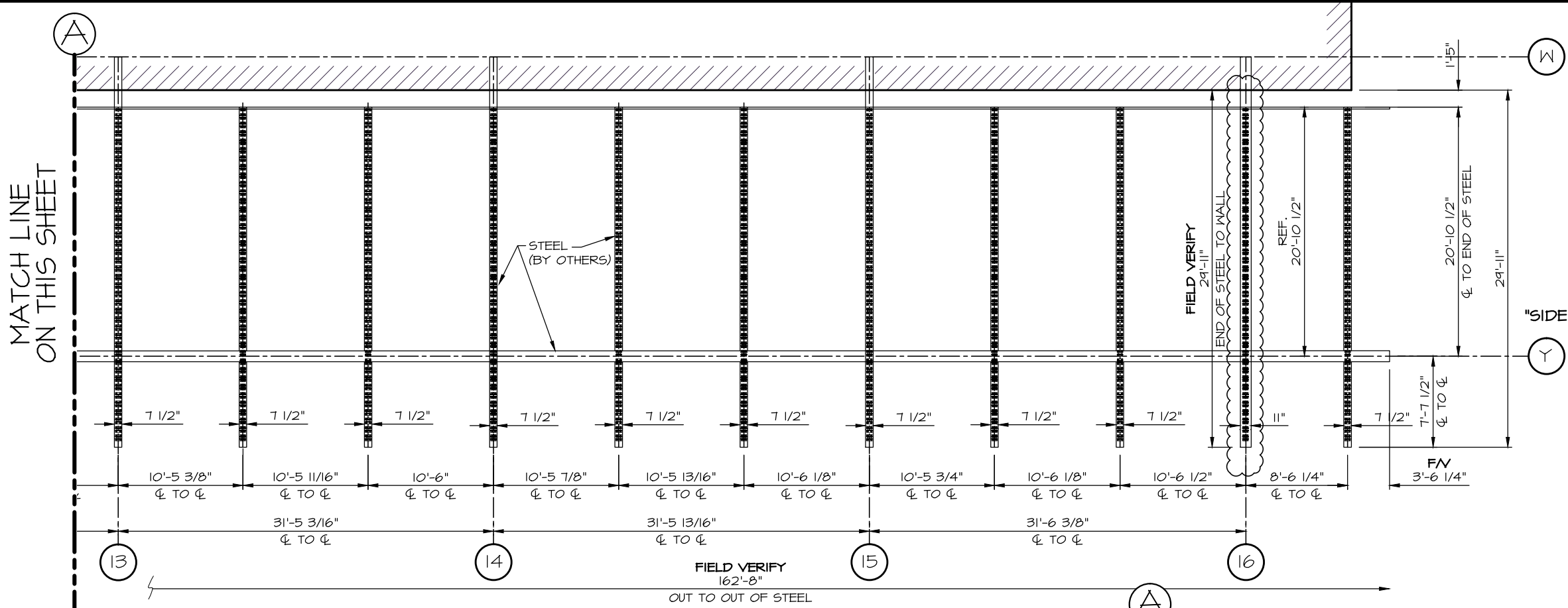
JOB #  
**4022**  
 SHT 1 OF 10

**FINISH SCHEDULE**

DESCRIPTION	FINISH	COLOR
10"X2" TUBE	2-COAT KYNAR	MATCH BENJ. MOORE 857
4"X1" TUBE	2-COAT KYNAR	MATCH BENJ. MOORE 857
4"X5" "T"	2-COAT KYNAR	MATCH BENJ. MOORE 857

Drawing: 4022-FF.dwg Layout: 4022-2R2  
 Saved: 8/12/08 4:45am By: rvenable

MATCH LINE  
ON THIS SHEET



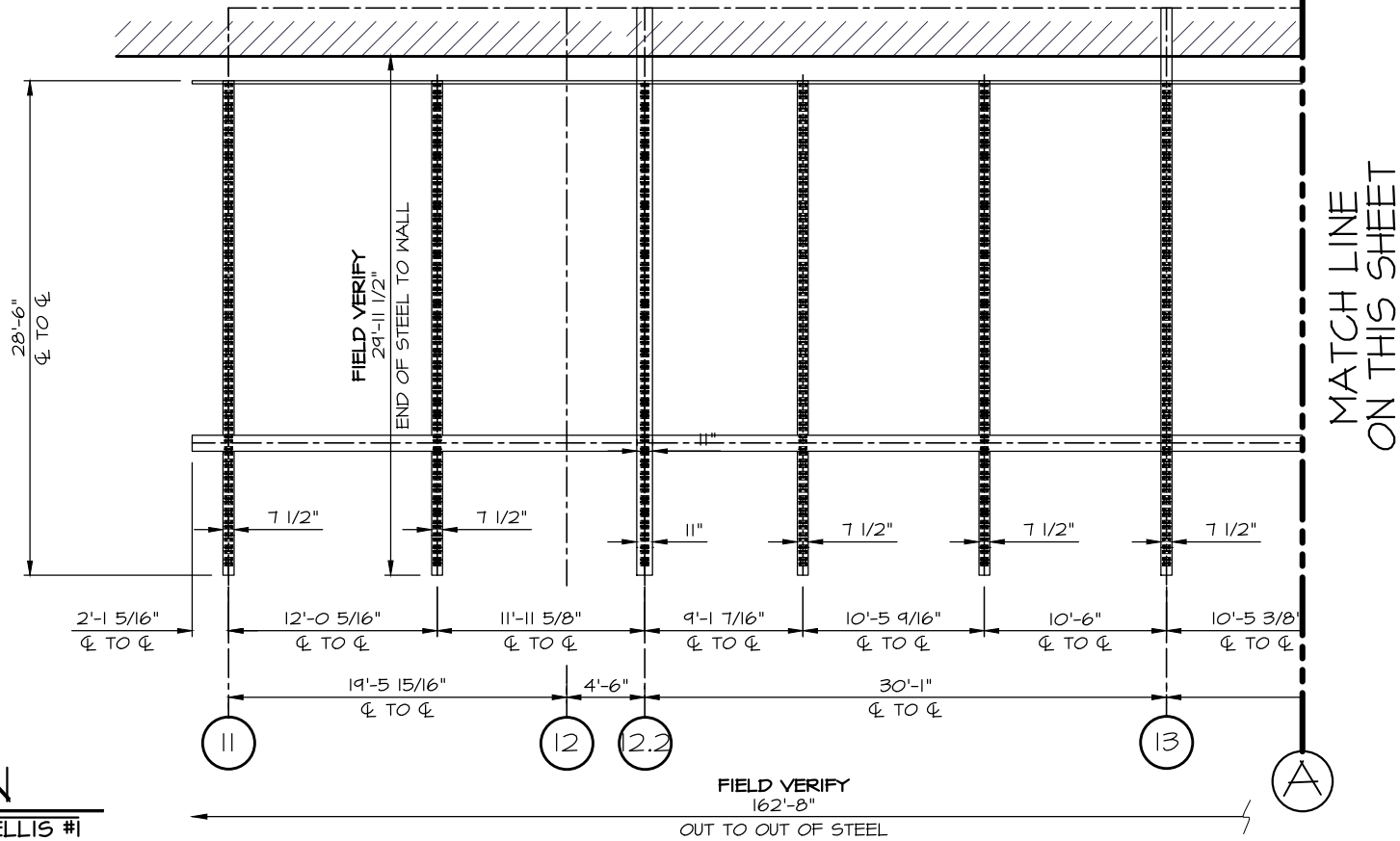
PROVIDE THICKNESS OF EACH "W"-BEAM TO VERIFY BOLT LENGTH

FIELD VERIFY ALL STEEL DIMENSIONS PRIOR TO FABRICATION

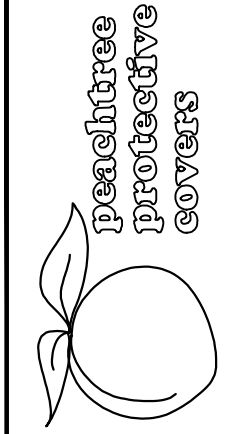
# STEEL PLAN

SCALE: 3/32"=1'-0"

TRELLIS #1



MATCH LINE  
ON THIS SHEET



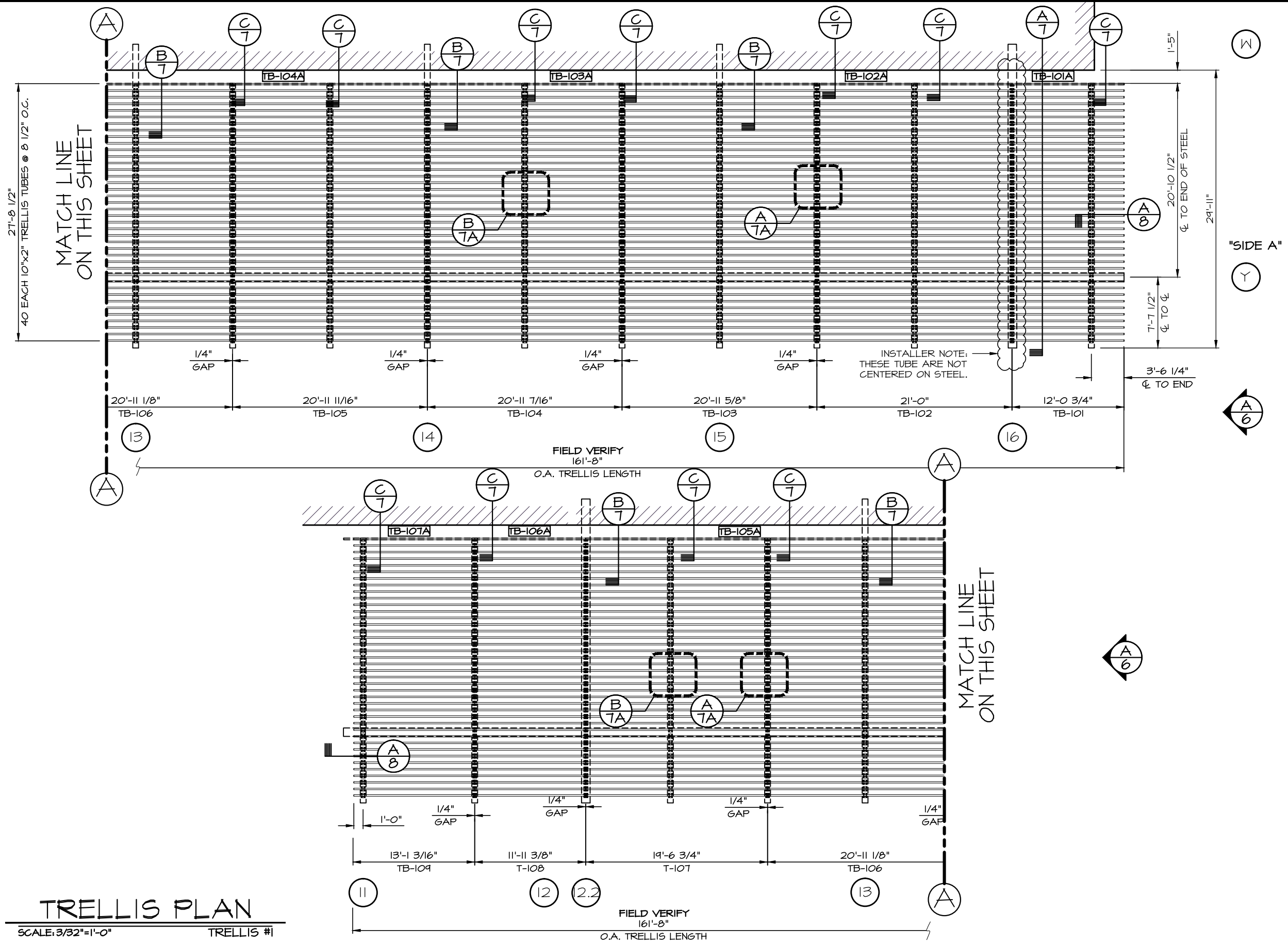
peachtree protective covers  
 1477 ROSEDALE DRIVE HIRAM, GA 30141  
 PHONE (770) 434-2120 FAX (770) 434-2122

GEORGIA TECH NANOTECHNOLOGY  
 JOB NAME: RESEARCH CENTER  
 LOCATION: ATLANTA, GA  
 ARCHITECT: M & W ZANDER US OPERATIONS INC.  
 CONTRACTOR: THE WHITING-TURNER CONTRACTING COMPANY

REVISIONS	
10/21/07 RV	
1/31/08 RV	

DRAWN: RLV  
 SCALE: AS SHOWN  
 DATE: 12/21/06  
 JOB #  
**4022**  
 SHT 2 OF 10

Drawing: 4022-FF.dwg Layout: 4022-3R2  
 Saved: 8/12/08 4:45am By: rvenable



**TRELLIS PLAN**

SCALE: 3/32"=1'-0" TRELLIS #1



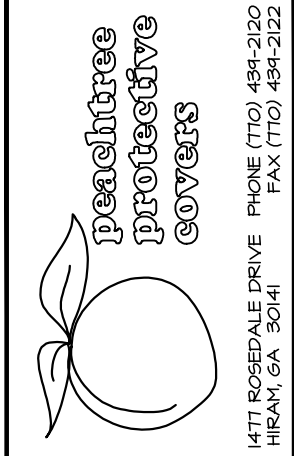
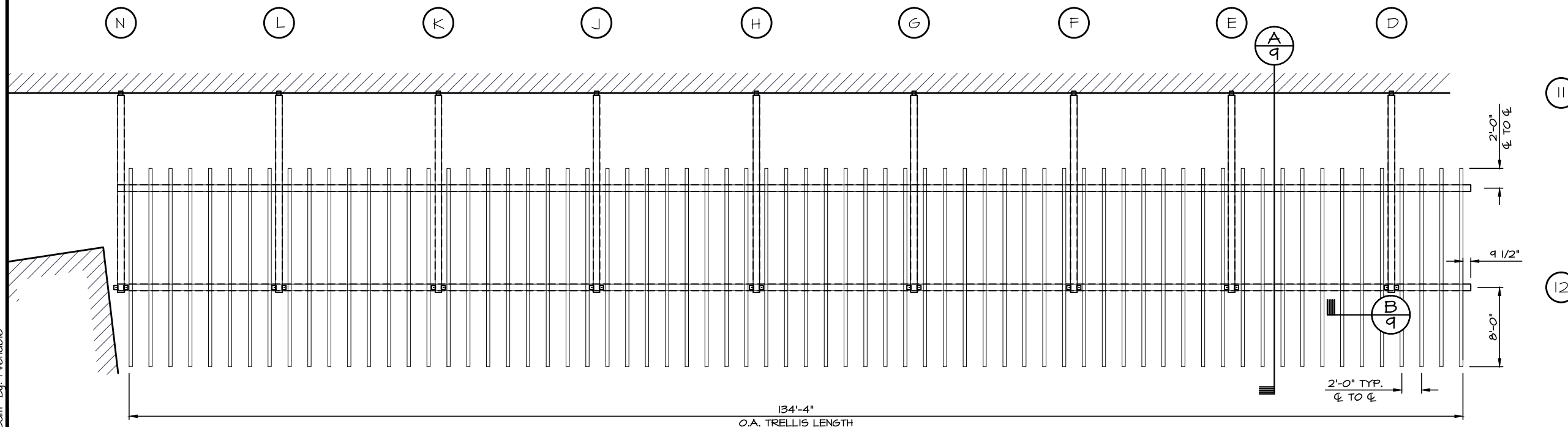
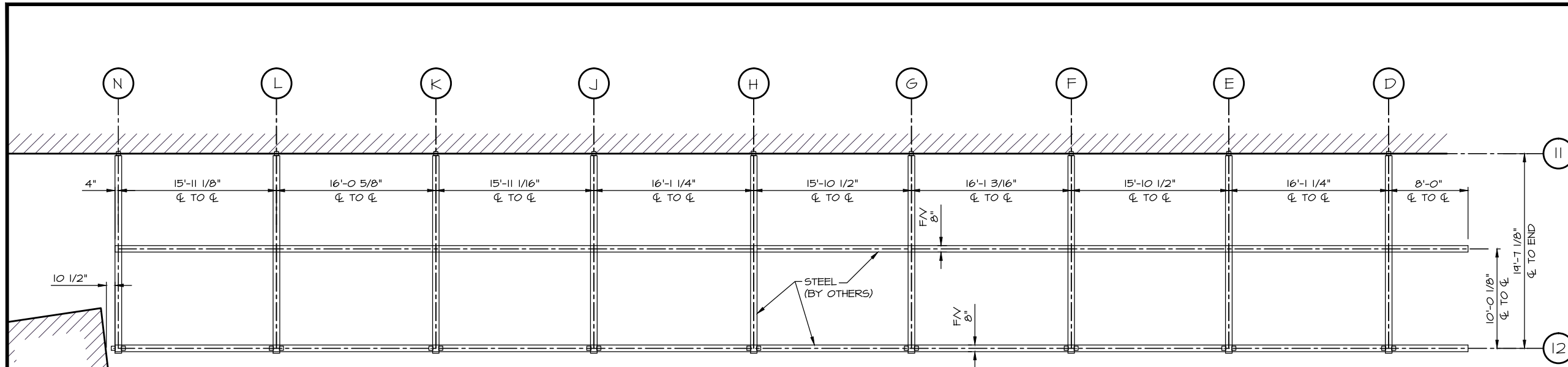
1477 ROSEDALE DRIVE PHONE (770) 434-2120  
 HIRAM, GA 30141 FAX (770) 434-2122

GEORGIA TECH NANOTECHNOLOGY  
 JOB NAME: RESEARCH CENTER  
 LOCATION: ATLANTA, GA  
 ARCHITECT: M & W ZANDER US OPERATIONS INC.  
 CONTRACTOR: THE WHITING-TURNER CONTRACTING COMPANY

REVISIONS	
10/21/07 RV	
1/31/08 RV	

DRAWN: RLV  
 SCALE: AS SHOWN  
 DATE: 12/21/06  
 JOB #  
**4022**  
 SHT 3 OF 10

Drawing: 4022-FF.dwg Layout: 4022-4R2  
 Saved: 8/12/08 4:45am By: rvenable

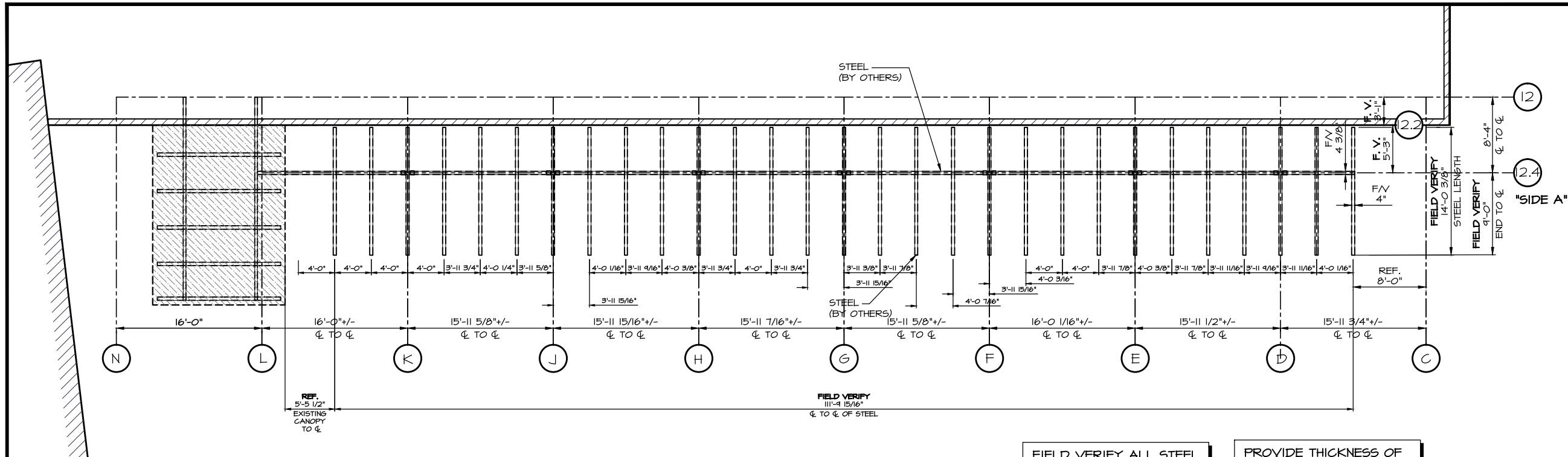


1477 ROSEDALE DRIVE PHONE (770) 434-2120  
 HIRAM, GA 30141 FAX (770) 434-2122

GEORGIA TECH NANOTECHNOLOGY  
 JOB NAME: RESEARCH CENTER  
 LOCATION: ATLANTA, GA  
 ARCHITECT: M & W ZANDER US OPERATIONS INC.  
 CONTRACTOR: THE WHITING-TURNER CONTRACTING COMPANY

REVISIONS	
10/21/07 RV	
1/31/08 RV	
DRAWN: RLV	
SCALE: AS SHOWN	
DATE: 12/21/06	
JOB #	
4022	
SHT 4 OF 10	

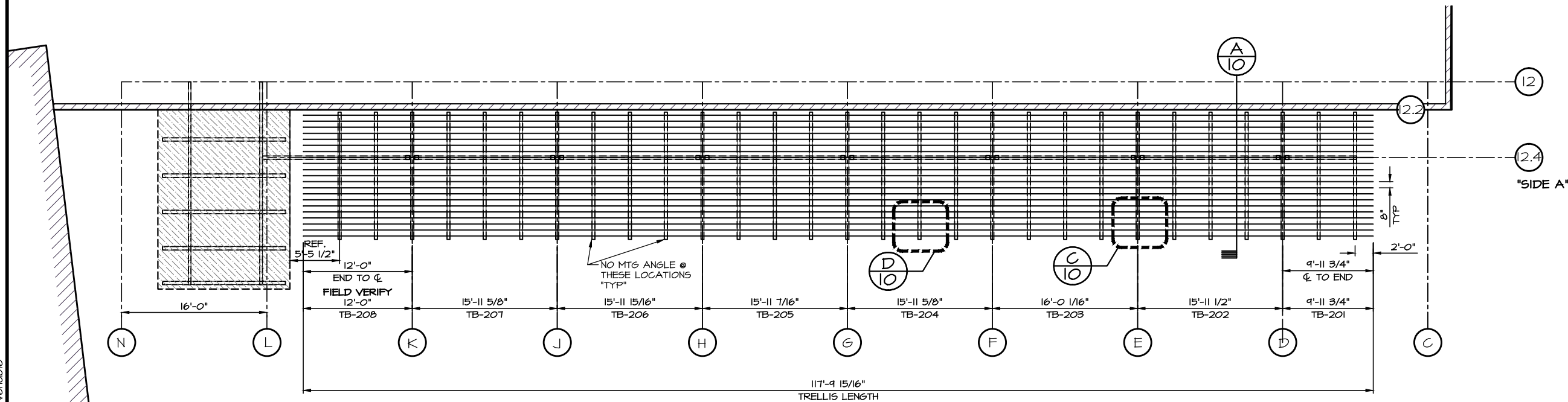
Drawing: 4022-FF.dwg Layout: 4022-5R2  
 Saved: 8/12/08 4:45am By: rvenable



### STEEL PLAN

SCALE: 3/32"=1'-0"

TRELLIS #3



### TRELLIS PLAN

SCALE: 3/32"=1'-0"

TRELLIS #3



1477 ROSEDALE DRIVE PHONE (770) 494-2120  
 HIRAM, GA 30141 FAX (770) 494-2122

GEORGIA TECH NANOTECHNOLOGY  
 JOB NAME: RESEARCH CENTER  
 LOCATION: ATLANTA, GA  
 ARCHITECT: M & W ZANDER US OPERATIONS INC.  
 CONTRACTOR: THE WHITING-TURNER CONTRACTING COMPANY

#### REVISIONS

10/21/07 RV	
1/31/08 RV	

DRAWN: RLV

SCALE: AS SHOWN

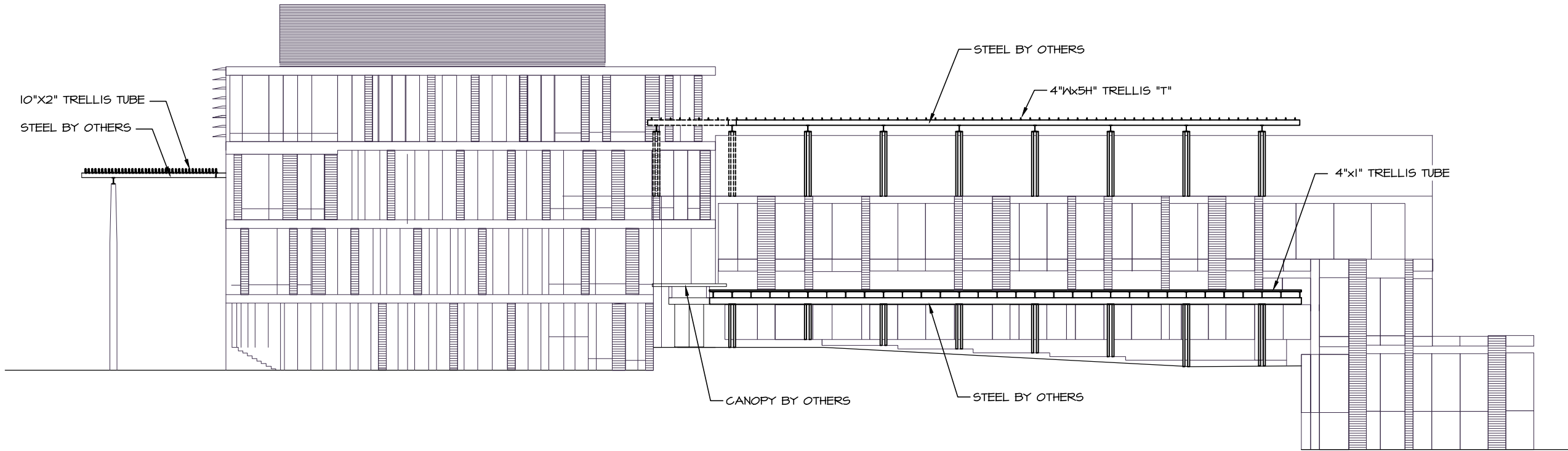
DATE: 12/21/06

JOB #

4022

SHT 5 OF 10

Drawing: 4022-FF.dwg Layout: 4022-6RI  
 Saved: 8/12/08 4:45am By: rvenable



(A/6) ELEVATION



peachtree  
 protective  
 covers

1477 ROSEDALE DRIVE PHONE (770) 494-2120  
 HIRAM, GA 30141 FAX (770) 494-2122

GEORGIA TECH NANOTECHNOLOGY  
 JOB NAME: RESEARCH CENTER  
 LOCATION: ATLANTA, GA  
 ARCHITECT: M & W ZANDER US OPERATIONS INC.  
 CONTRACTOR: THE WHITING-TURNER CONTRACTING COMPANY

REVISIONS

10/21/07 RV	

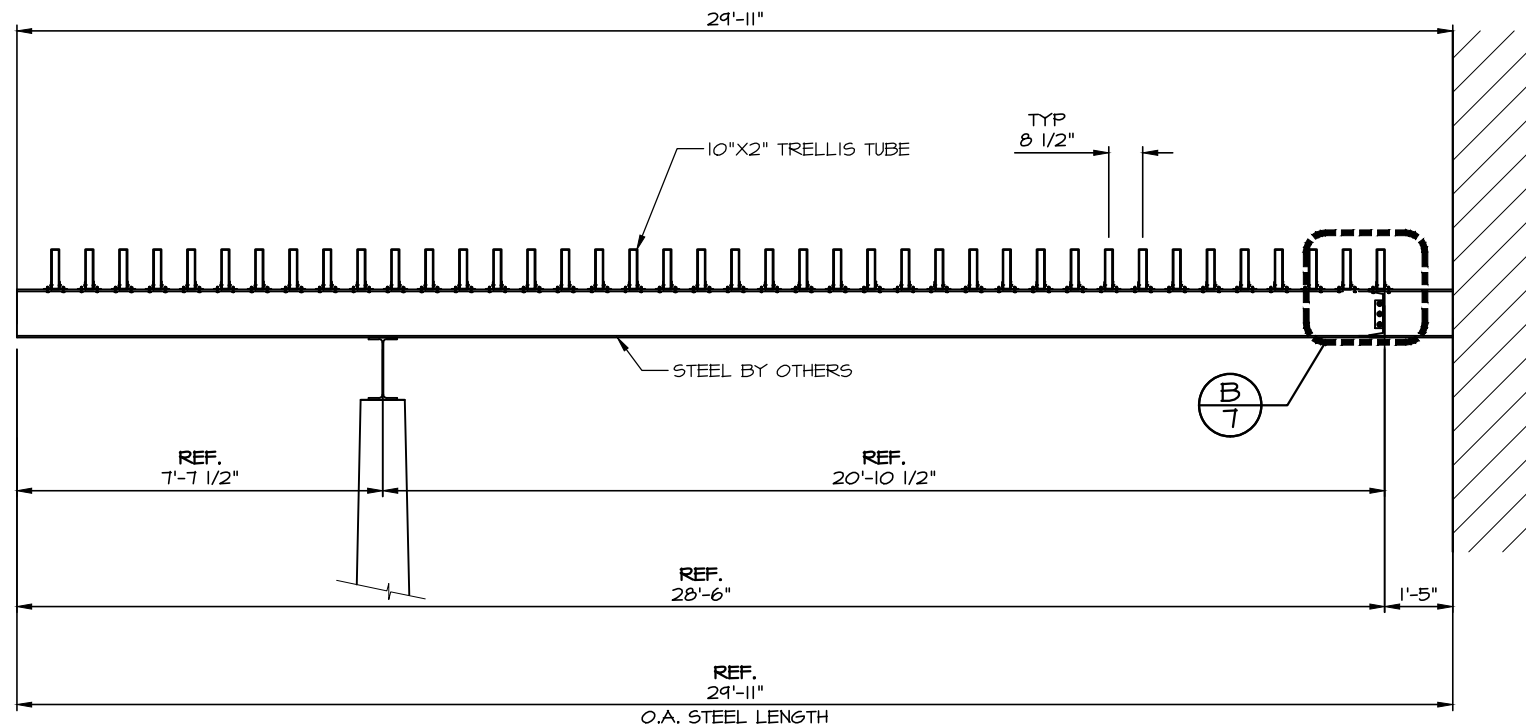
DRAWN: RLV

SCALE: AS SHOWN

DATE: 12/21/06

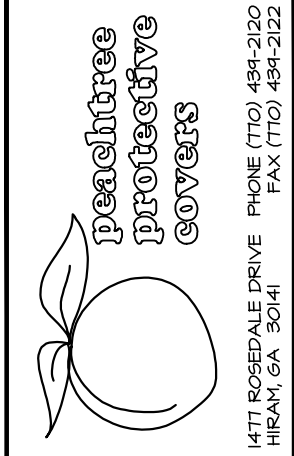
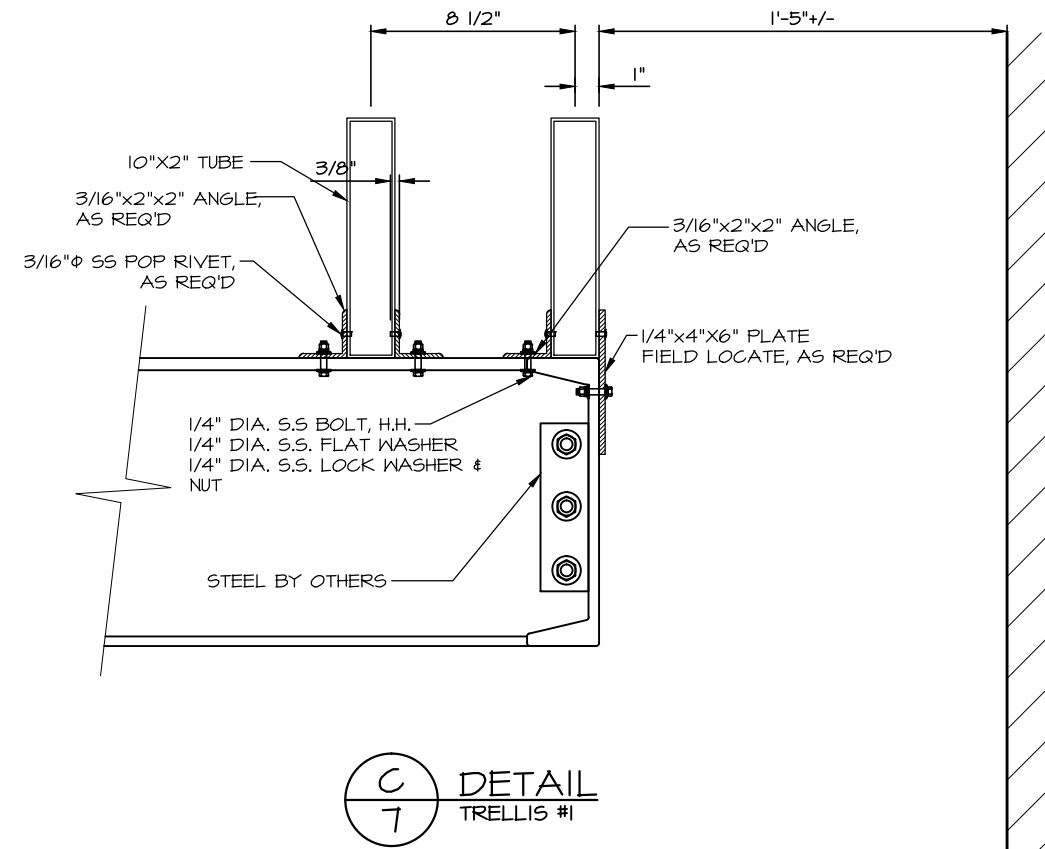
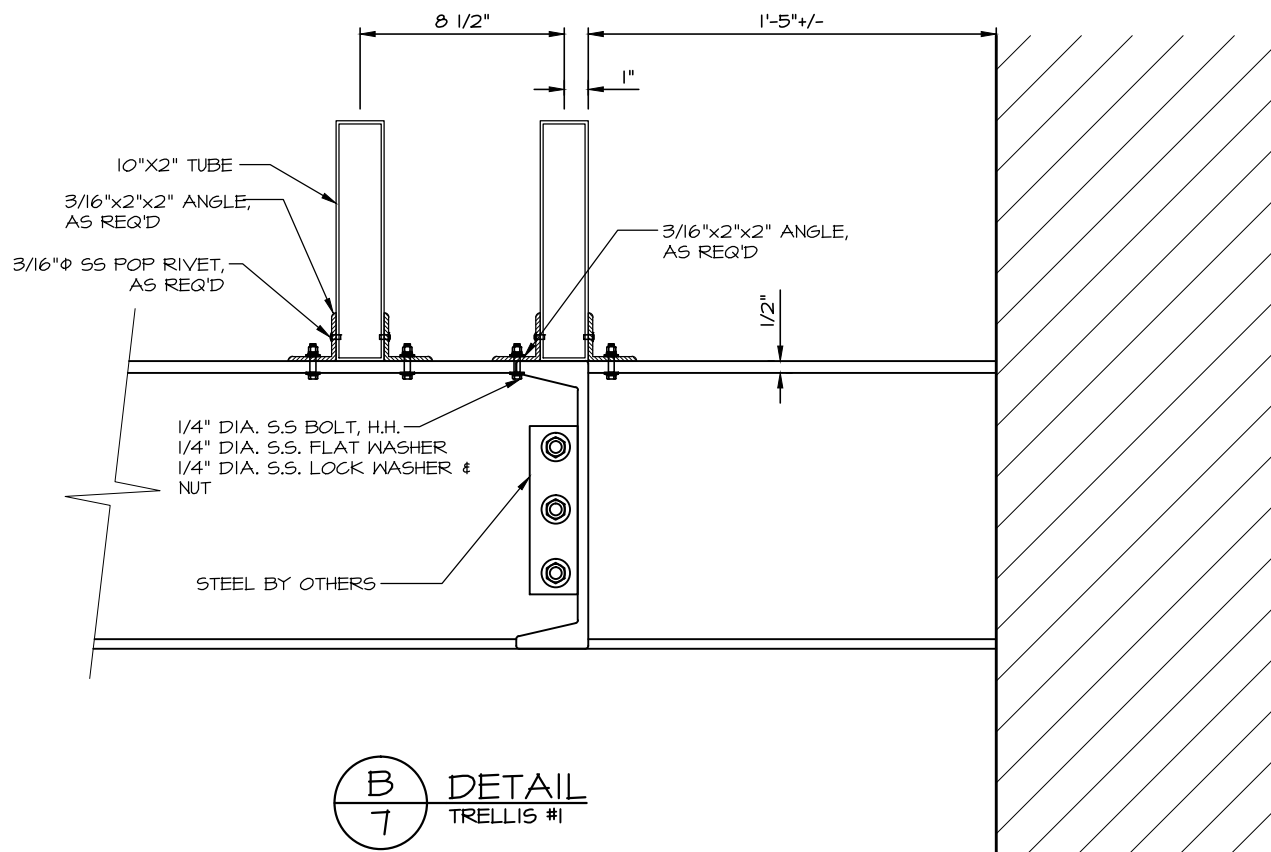
JOB #  
**4022**  
 SHT 6 OF 10

Drawing: 4022-FF.dwg Layout: 4022-TR2  
 Saved: 8/12/08 4:45am By: rvenable



INSTALLER NOTE:  
 ISOLATION MATERIAL REQUIRED BETWEEN  
 STEEL & ALUMINUM MATERIALS, TYP. #15 LB.  
 FELT ISOLATION MATERIAL REQUIRED  
 BETWEEN DISSIMILAR MATERIALS.

INSTALLER NOTE:  
 ISOLATION MATERIAL REQUIRED BETWEEN  
 STEEL & ALUMINUM MATERIALS, TYP. #15 LB.  
 FELT ISOLATION MATERIAL REQUIRED  
 BETWEEN DISSIMILAR MATERIALS.



GEORGIA TECH NANOTECHNOLOGY  
 JOB NAME: RESEARCH CENTER  
 LOCATION: ATLANTA, GA

ARCHITECT: M & W ZANDER US OPERATIONS INC.  
 CONTRACTOR: THE WHITING-TURNER CONTRACTING COMPANY

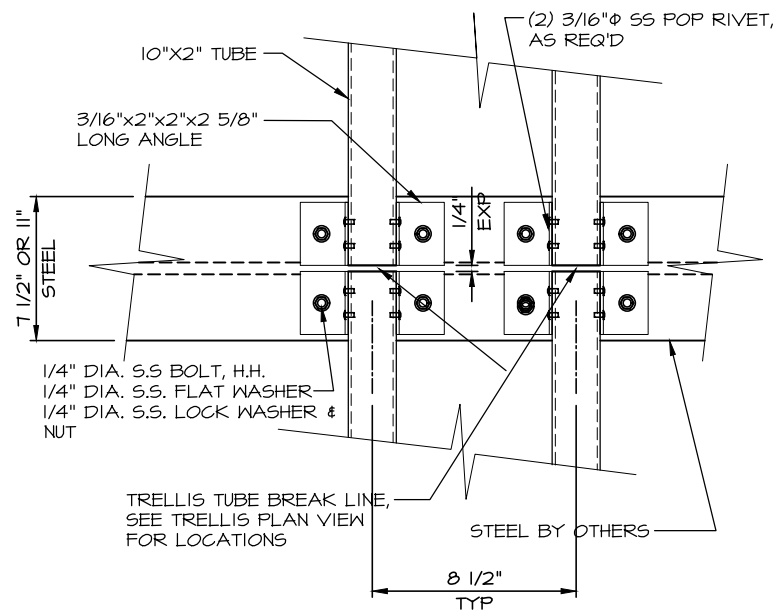
REVISIONS	
10/21/07 RV	
1/31/08 RV	

DRAWN: RLV  
 SCALE: AS SHOWN  
 DATE: 12/21/06  
 JOB #  
**4022**  
 SHT 7 OF 10



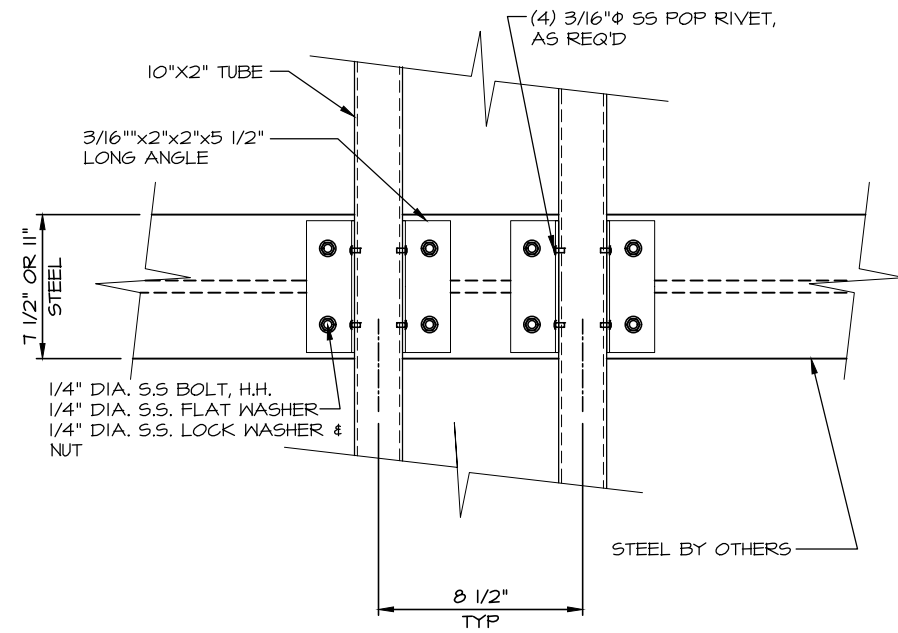
Drawing: 4022-FF.dwg Layout: 4022-7A  
 Saved: 8/12/06 4:45am By: rvenable

INSTALLER NOTE:  
 ISOLATION MATERIAL REQUIRED BETWEEN  
 STEEL & ALUMINUM MATERIALS, TYP. #15 LB.  
 FELT ISOLATION MATERIAL REQUIRED  
 BETWEEN DISSIMILAR MATERIALS.

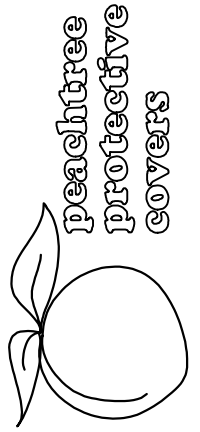


**A** SECTION  
 7A TRELLIS #1

INSTALLER NOTE:  
 ISOLATION MATERIAL REQUIRED BETWEEN  
 STEEL & ALUMINUM MATERIALS, TYP. #15 LB.  
 FELT ISOLATION MATERIAL REQUIRED  
 BETWEEN DISSIMILAR MATERIALS.



**B** SECTION  
 7A TRELLIS #1



1477 ROSEDALE DRIVE PHONE (770) 494-2120  
 HIRAM, GA 30141 FAX (770) 494-2122

GEORGIA TECH NANOTECHNOLOGY  
 JOB NAME: RESEARCH CENTER  
 LOCATION: ATLANTA, GA  
 ARCHITECT: M & W ZANDER US OPERATIONS INC.  
 CONTRACTOR: THE WHITING-TURNER CONTRACTING COMPANY

REVISIONS	
10/21/07 RV	NEW SHEET

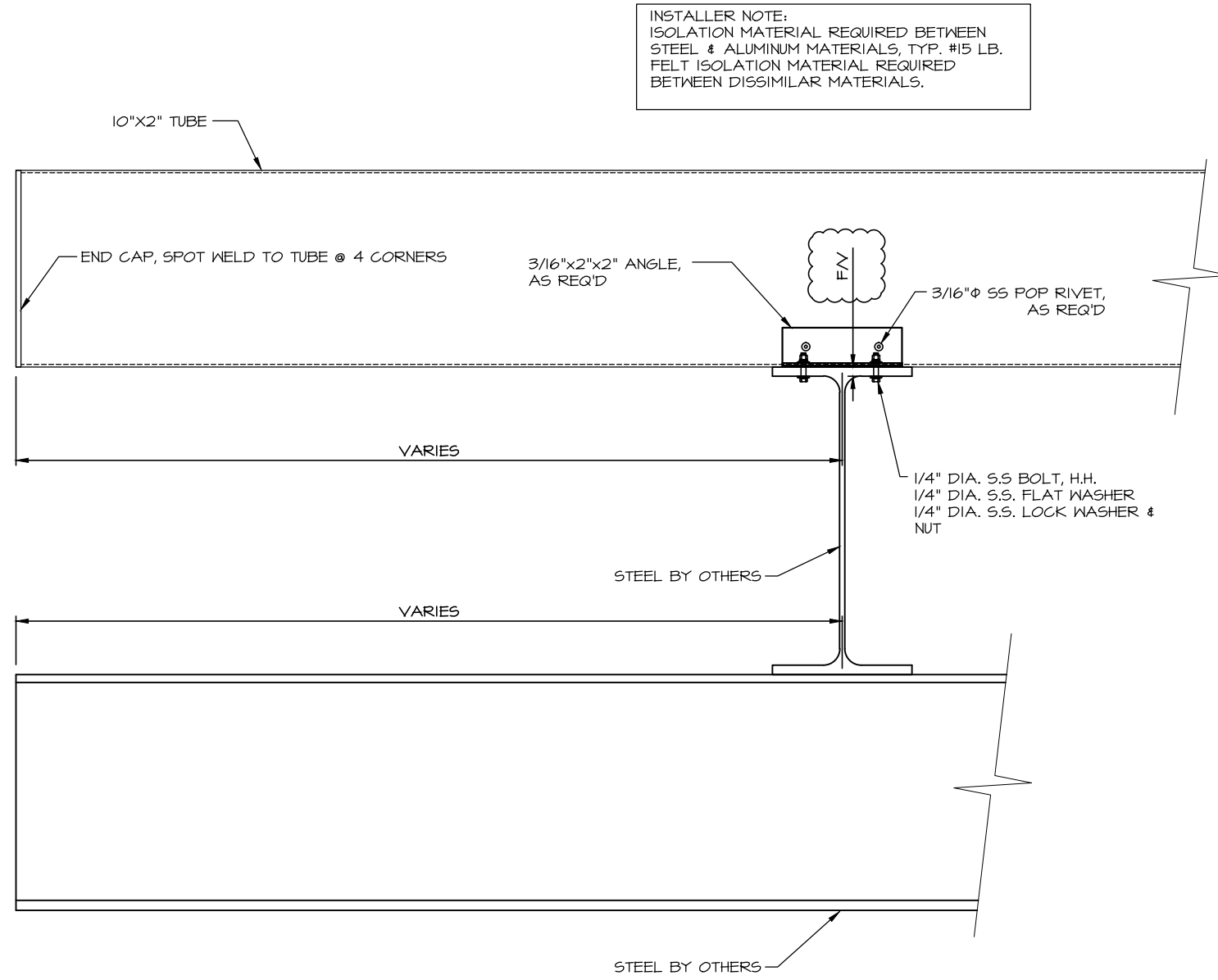
DRAWN: RLV

SCALE: AS SHOWN

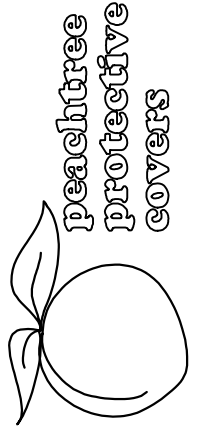
DATE: 12/21/06

JOB #  
**4022**  
 SHT 7A OF 10

Drawing: 4022-FF.dwg Layout: 4022-8RI  
 Saved: 8/12/06 4:45am By: rvenable



A SECTION  
 8 TRELLIS #1



1477 ROSEDALE DRIVE PHONE (770) 494-2120  
 HIRAM, GA 30141 FAX (770) 494-2122

JOB NAME: GEORGIA TECH NANOTECHNOLOGY RESEARCH CENTER  
 LOCATION: ATLANTA, GA  
 ARCHITECT: M & W ZANDER US OPERATIONS INC.  
 CONTRACTOR: THE WHITING-TURNER CONTRACTING COMPANY

REVISIONS

10/21/07 RV	

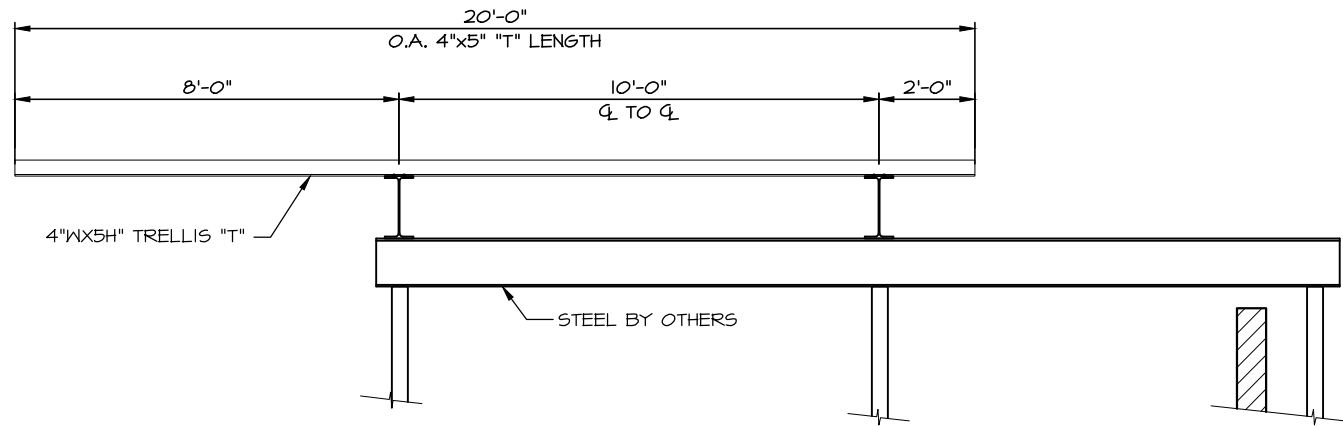
DRAWN: RLV

SCALE: AS SHOWN

DATE: 12/21/06

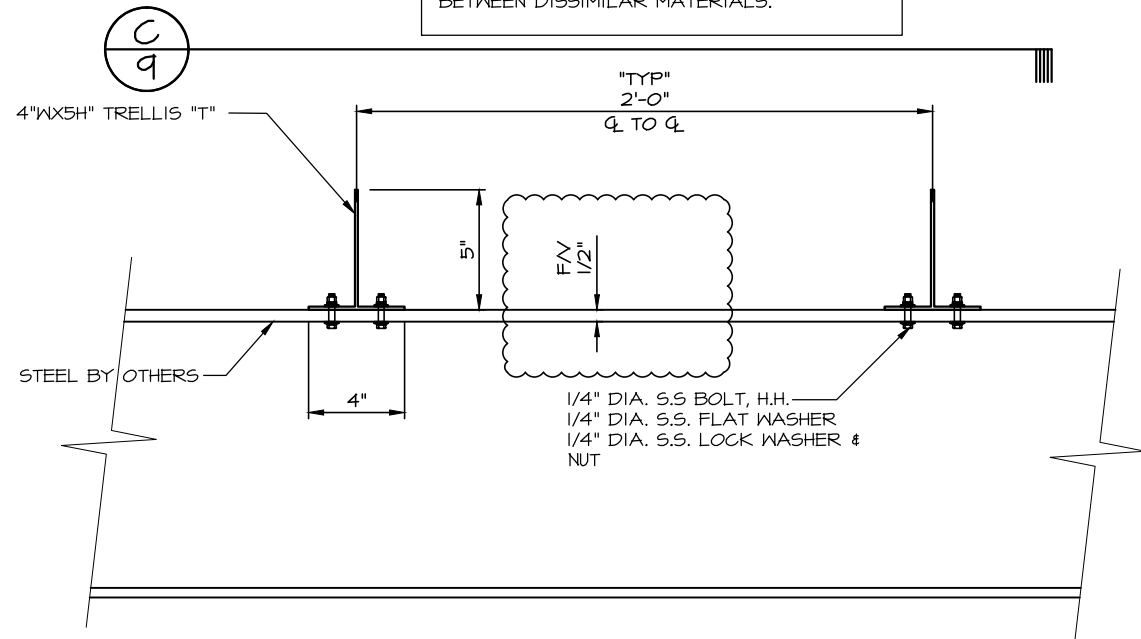
JOB #  
**4022**  
 SHT 8 OF 10

Drawing: 4022-FF.dwg Layout: 4022-qr2  
 Saved: 8/12/08 11:45am By: rvenable



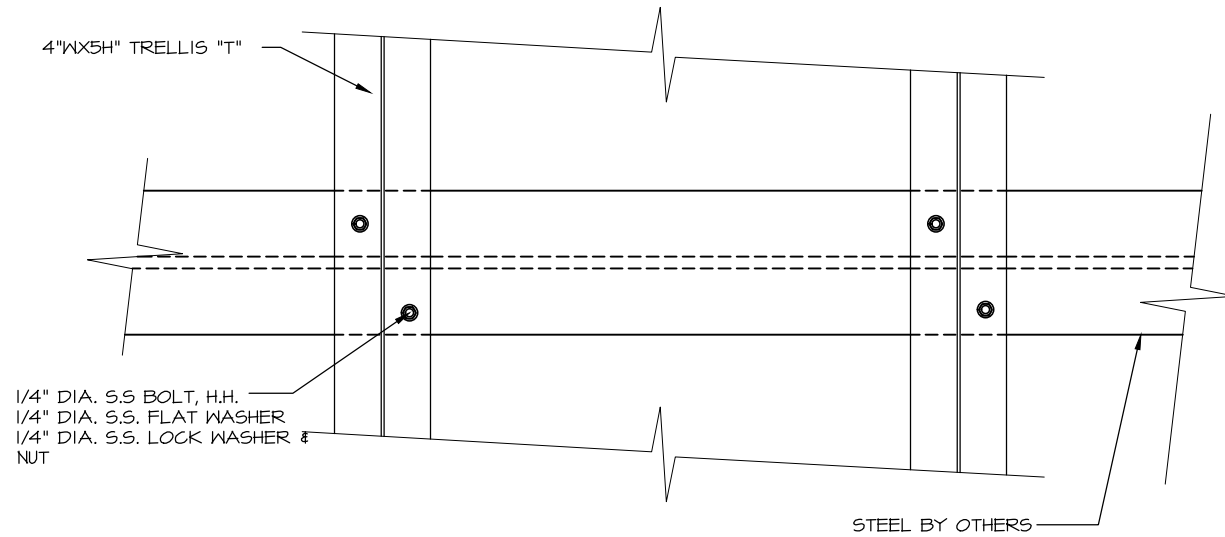
**A**  
SECTION

INSTALLER NOTE:  
 ISOLATION MATERIAL REQUIRED BETWEEN  
 STEEL & ALUMINUM MATERIALS, TYP. #15 LB.  
 FELT ISOLATION MATERIAL REQUIRED  
 BETWEEN DISSIMILAR MATERIALS.

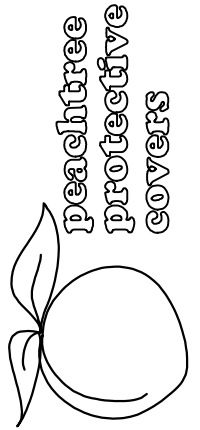


**B**  
SECTION  
TRELLIS #2

INSTALLER NOTE:  
 ISOLATION MATERIAL REQUIRED BETWEEN  
 STEEL & ALUMINUM MATERIALS, TYP. #15 LB.  
 FELT ISOLATION MATERIAL REQUIRED  
 BETWEEN DISSIMILAR MATERIALS.



**C**  
VIEW  
TRELLIS #2



1477 ROSEDALE DRIVE PHONE (770) 494-2120  
 HIRAM, GA 30141 FAX (770) 494-2122

GEORGIA TECH NANOTECHNOLOGY  
 JOB NAME: RESEARCH CENTER  
 LOCATION: ATLANTA, GA  
 ARCHITECT: M & W ZANDER US OPERATIONS INC.  
 CONTRACTOR: THE WHITING-TURNER CONTRACTING COMPANY

REVISIONS

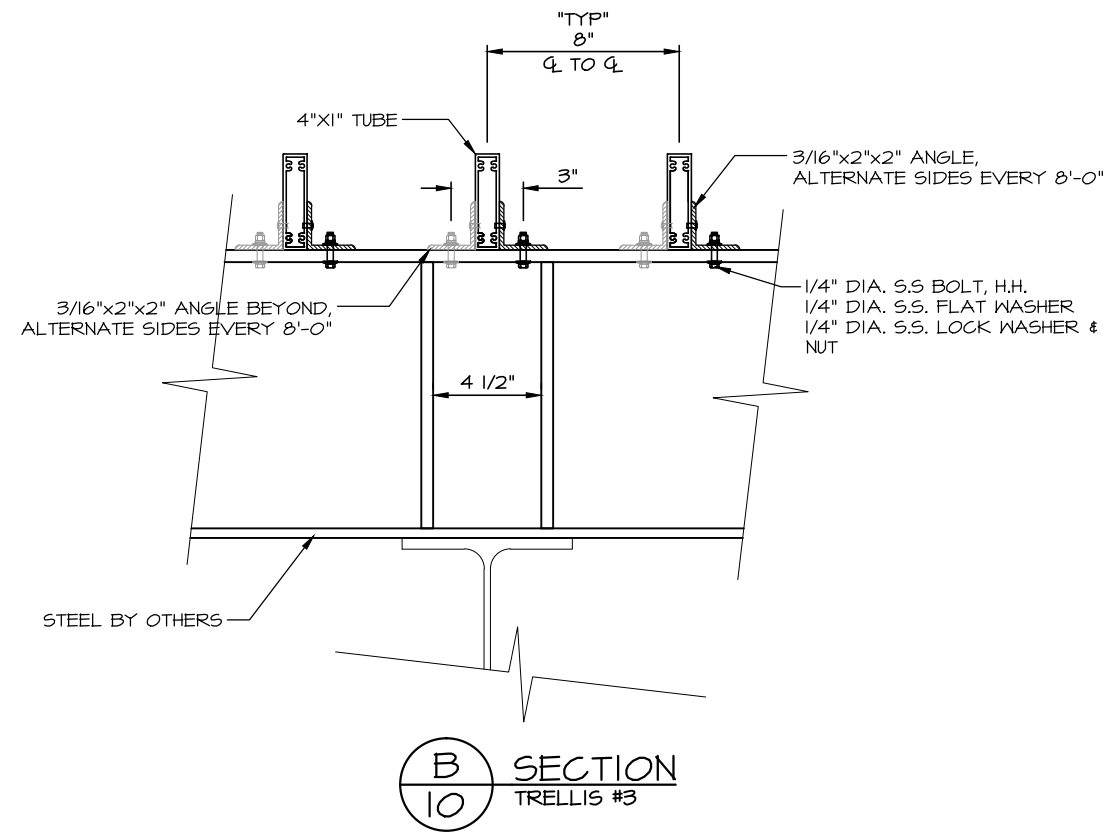
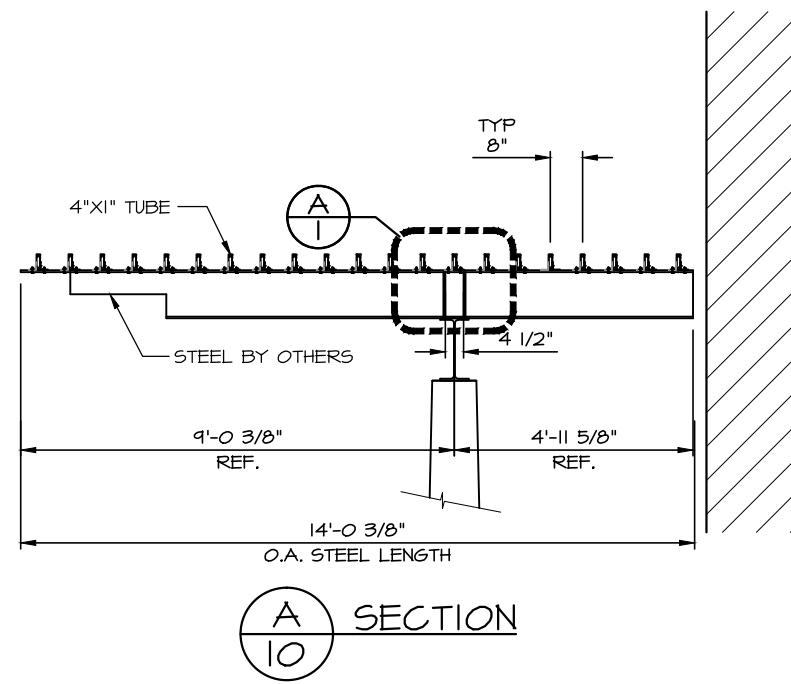
10/21/07 RV	
1/31/08 RV	

DRAWN: RLV

SCALE: AS SHOWN

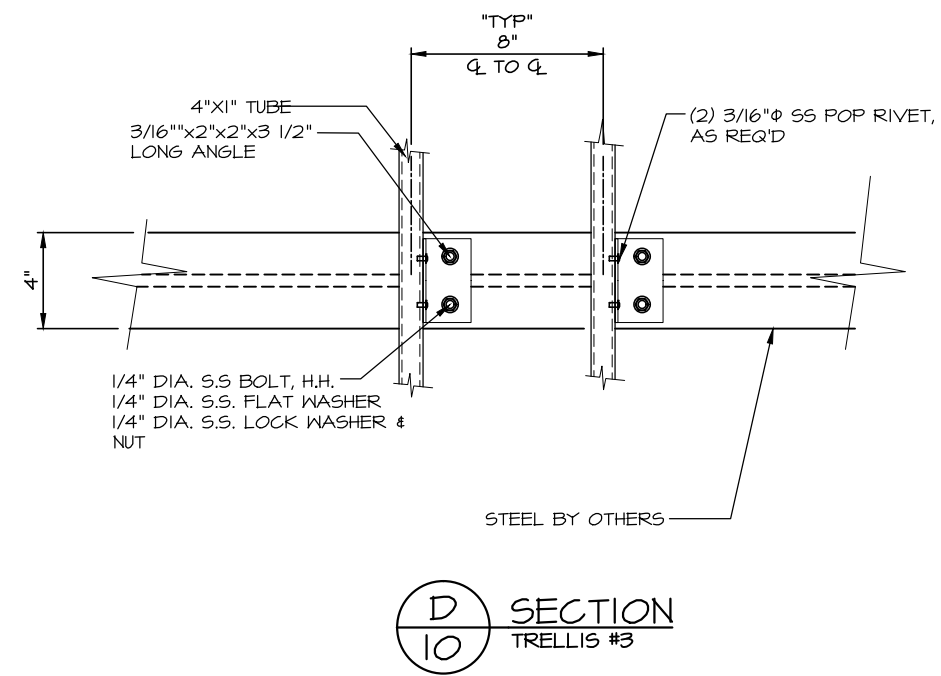
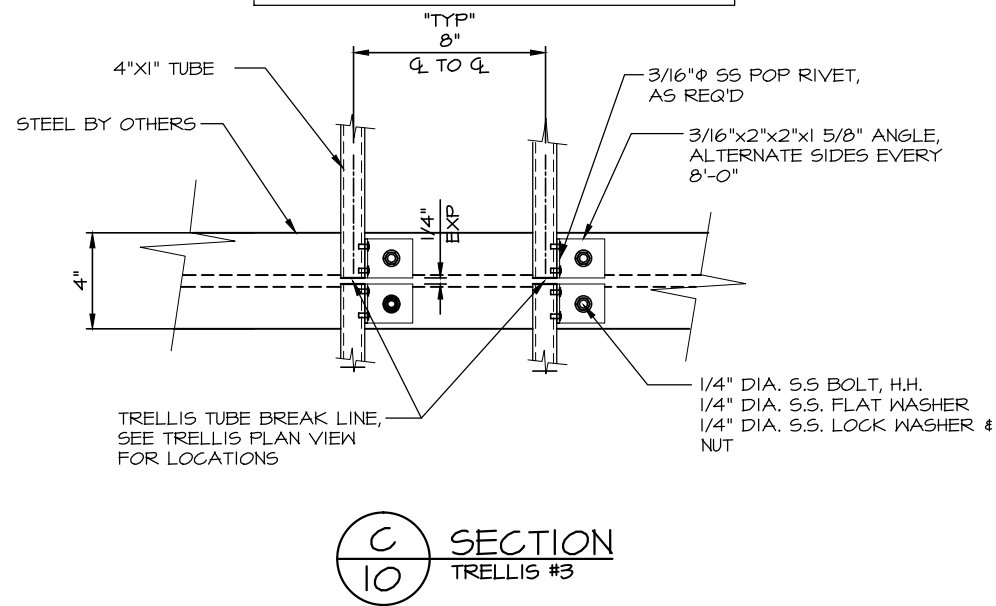
DATE: 12/21/06

JOB #  
**4022**  
 SHT 9 OF 10

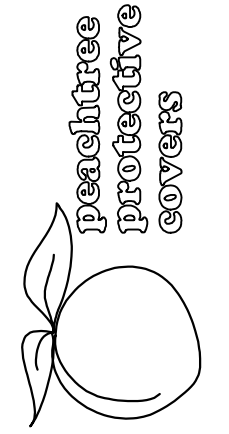


INSTALLER NOTE:  
ISOLATION MATERIAL REQUIRED BETWEEN  
STEEL & ALUMINUM MATERIALS, TYP. #15 LB.  
FELT ISOLATION MATERIAL REQUIRED  
BETWEEN DISSIMILAR MATERIALS.

INSTALLER NOTE:  
ISOLATION MATERIAL REQUIRED BETWEEN  
STEEL & ALUMINUM MATERIALS, TYP. #15 LB.  
FELT ISOLATION MATERIAL REQUIRED  
BETWEEN DISSIMILAR MATERIALS.



Drawing: 4022-FF.dwg Layout: 4022-10R2  
Saved: 8/12/08 4:45am By: rvenable



1477 ROSEDALE DRIVE PHONE (770) 494-2120  
HIRAM, GA 30141 FAX (770) 494-2122

GEORGIA TECH NANOTECHNOLOGY  
JOB NAME: RESEARCH CENTER  
LOCATION: ATLANTA, GA  
ARCHITECT: M & W ZANDER US OPERATIONS INC.  
CONTRACTOR: THE WHITING-TURNER CONTRACTING COMPANY

REVISIONS	
10/21/07 RV	
1/31/08 RV	
DRAWN: RLV	
SCALE: AS SHOWN	
DATE: 12/21/06	
JOB #	
4022	
SHT 10 OF 10	