

peachtree
protective
covers

JOB # 3997

BASE BID &
INCLUDING CO#1

SEMINOLE COMMUNITY COLLEGE
CLASSROOM BUILDING

ALTAMONTE SPRINGS, FL

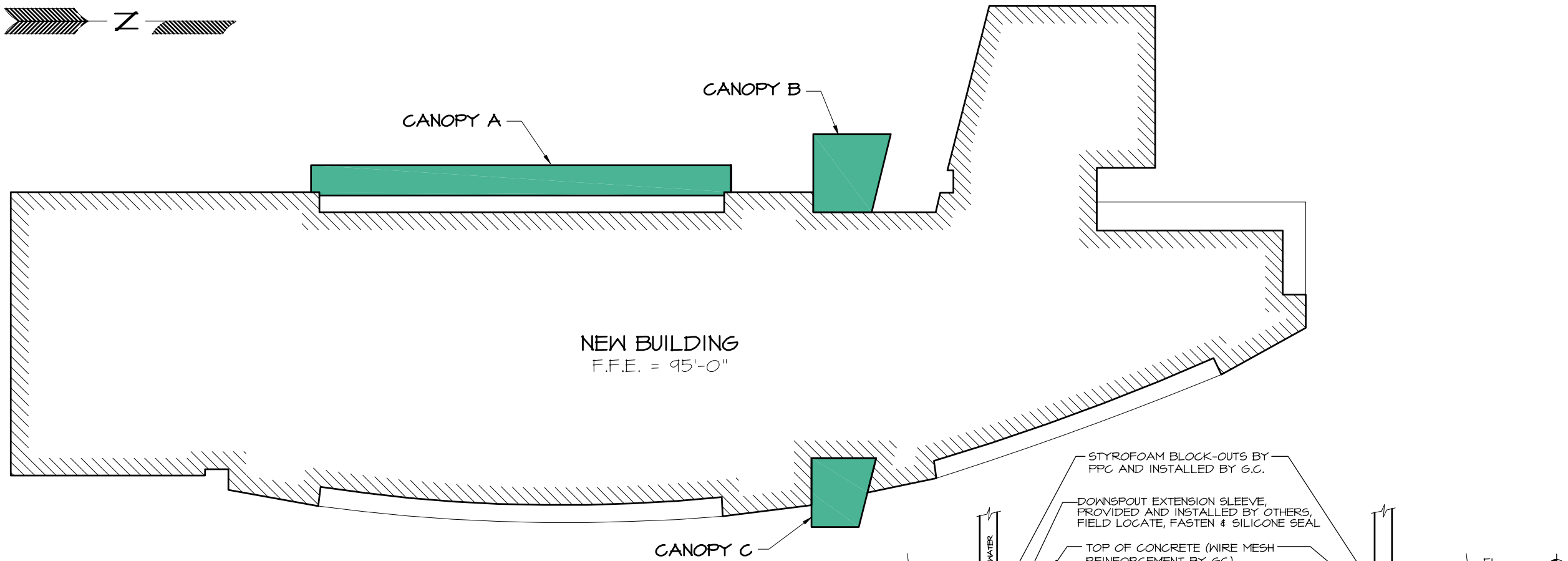
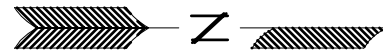
BY

HUNTON BRADY ARCHITECTS

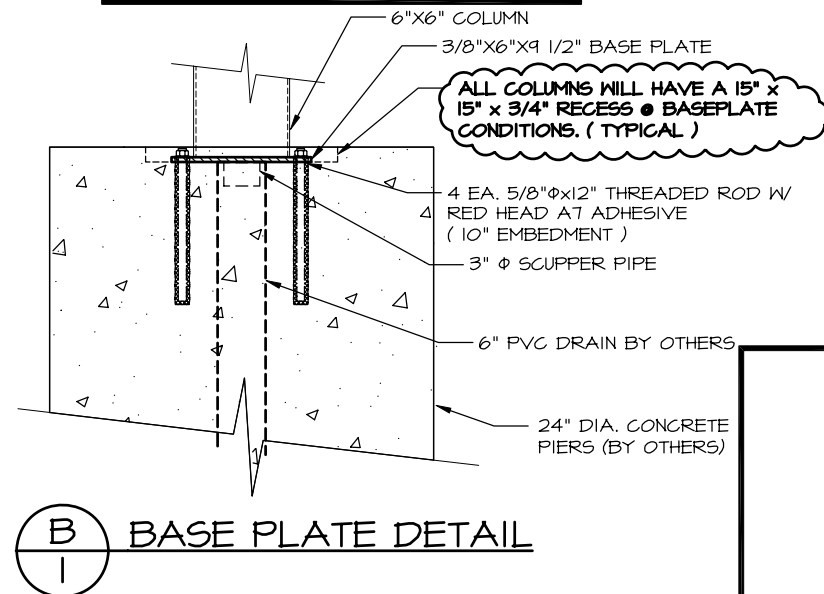
AUGUST 16, 2007

NOTE:
PEACHTREE PROTECTIVE COVERS RESERVES
THE RIGHT TO INSTALL MECHANICAL JOINTS
IN COLUMNS THAT EXCEED SHIPPING LIMITATIONS.

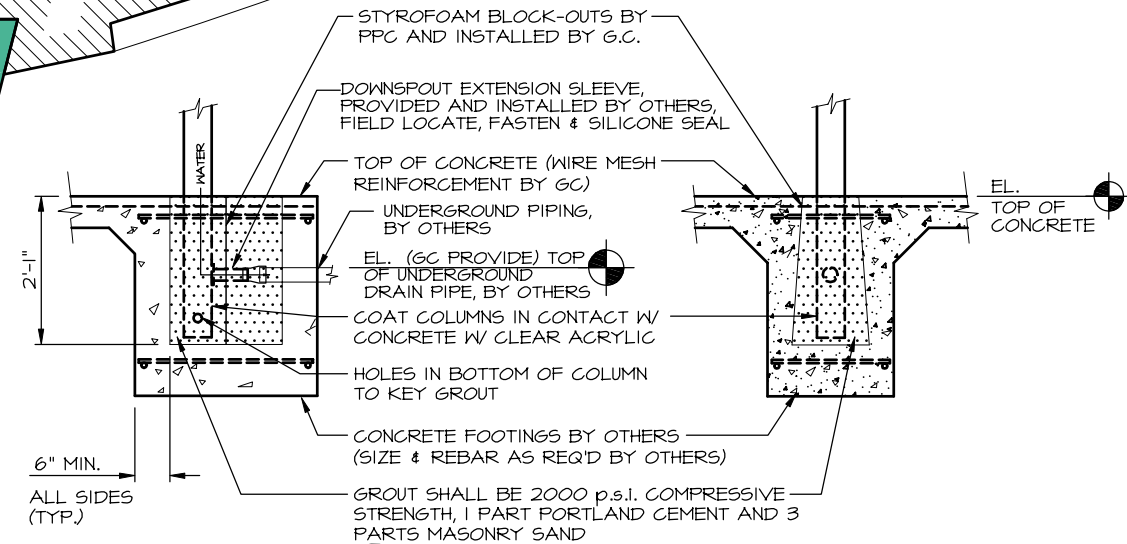
1477 ROSEDALE DRIVE
HIRAM, GA 30141
(770) 439-2120
fax (770) 439-2122



GC & ARCHITECT NOTE:
PLEASE DESIGN FOOTING TO RESIST
THE REACTION LOADS INDICATED ON
SECTIONS A/5



KEY PLAN
N.T.S.



A FOOTING DETAIL

FINISH SCHEDULE

DESCRIPTION	FINISH	COLOR	REVISIONS
6" DECK	2-COAT KYNAR	VALSPAR "TAUPE"	12/14/06 RLV
6" FASCIA	2-COAT KYNAR	VALSPAR "TAUPE"	6/5/07 RLV
6"x6" COLUMN	2-COAT KYNAR	VALSPAR "TAUPE"	6/20/07 RLV
10"x6" COLUMN	2-COAT KYNAR	VALSPAR "TAUPE"	
10"x6" BEAM (CANOPY A)	2-COAT KYNAR	VALSPAR "TAUPE"	
10"x6" BEAM (CANOPY B & C)	PPC'S CHOICE	PPC'S CHOICE	
1/8" THK. TAPERED PLATE	2-COAT KYNAR	VALSPAR "TAUPE"	
1/8" THK. ALUM. FASCIA PANEL	2-COAT KYNAR	PAC-CLAD GRANITE	
11" FLUSH SOFFIT PANEL	2-COAT KYNAR	PAC-CLAD GRANITE	
3/4" x 4 3/4" CHANNEL	PPC'S CHOICE	PPC'S CHOICE	
6"x4" BEAM	PPC'S CHOICE	PPC'S CHOICE	

BASE BID
CHANGE ORDER #1



1477 ROSEDALE DRIVE PHONE (770) 439-2120
HIRAM, GA 30141 FAX (770) 439-2122

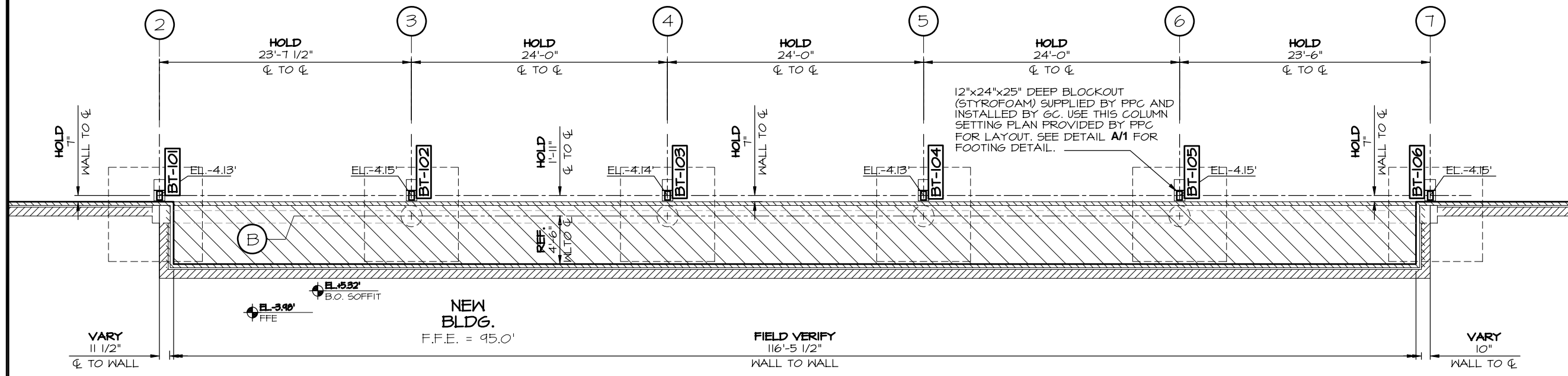
JOB NAME: SEMINOLE COMMUNITY COLLEGE CLASSROOM BUILDING
LOCATION: ALTAMONTE SPRINGS, FLORIDA
ARCHITECT: HUNTON BRADY ARCHITECTS
CONTRACTOR: CENTEX CONSTRUCTION CO.

DRAWN: J. B.
SCALE: AS SHOWN
DATE: 09/29/06
JOB #
3997
SHT 1 OF 9

Drawing: 3997T-5BRBDR.DWG Layout: Model
Plotted: Nov 17, 2006 - 2:21pm By: rvenable

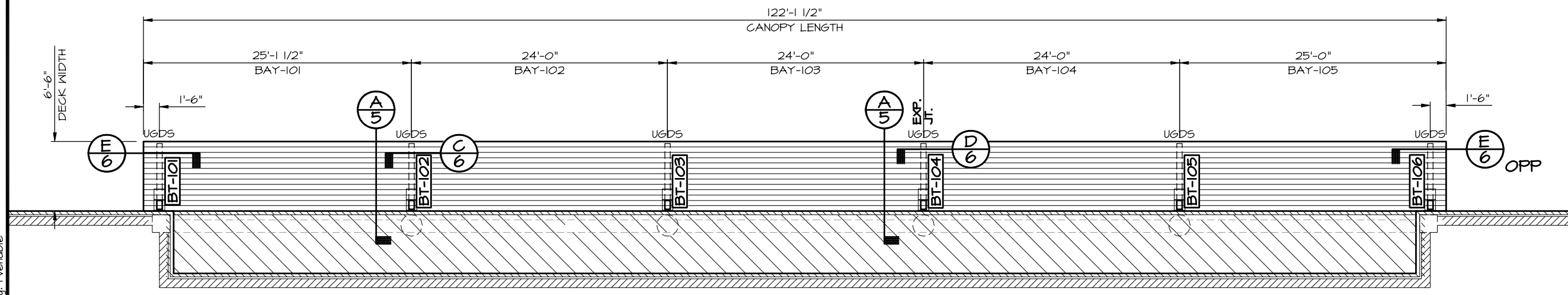
IF THE "VARY" DIMENSION NOTED ON DRAWINGS, INCREASES BY 12" OR MORE, CONTACT PPC IMMEDIATELY FOR COORDINATION & DIRECTION

G.C. PLEASE PROVIDE SPOT ELEVATIONS INDICATED ON COLUMN SETTING PLAN.



COLUMN SETTING PLAN

SCALE: 3/32"=1'-0" CANOPY A



DECK PLAN

SCALE: 3/32"=1'-0" CANOPY A



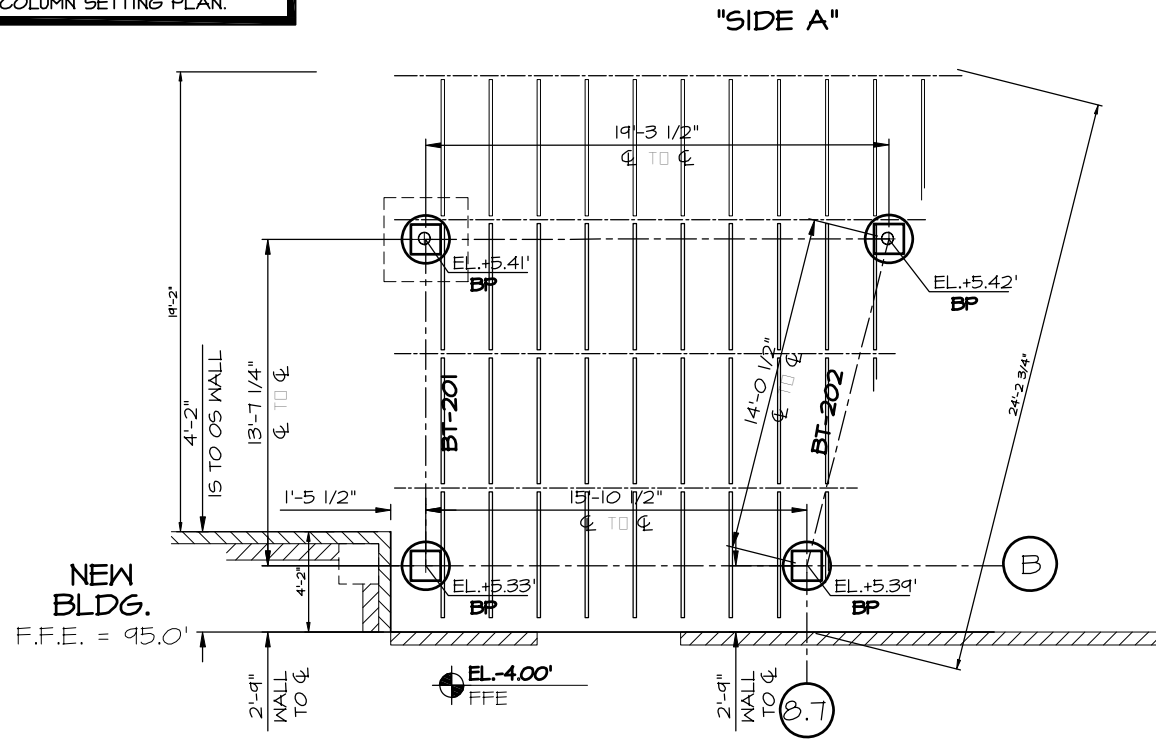
1477 ROSEDALE DRIVE PHONE (770) 439-2120
HIRAM, GA 30141 FAX (770) 439-2122

JOB NAME: SEMINOLE COMMUNITY COLLEGE CLASSROOM BUILDING
LOCATION: ALTAMONTE SPRINGS, FLORIDA
ARCHITECT: HUNTON BRADY ARCHITECTS
CONTRACTOR: CENTEX CONSTRUCTION CO.

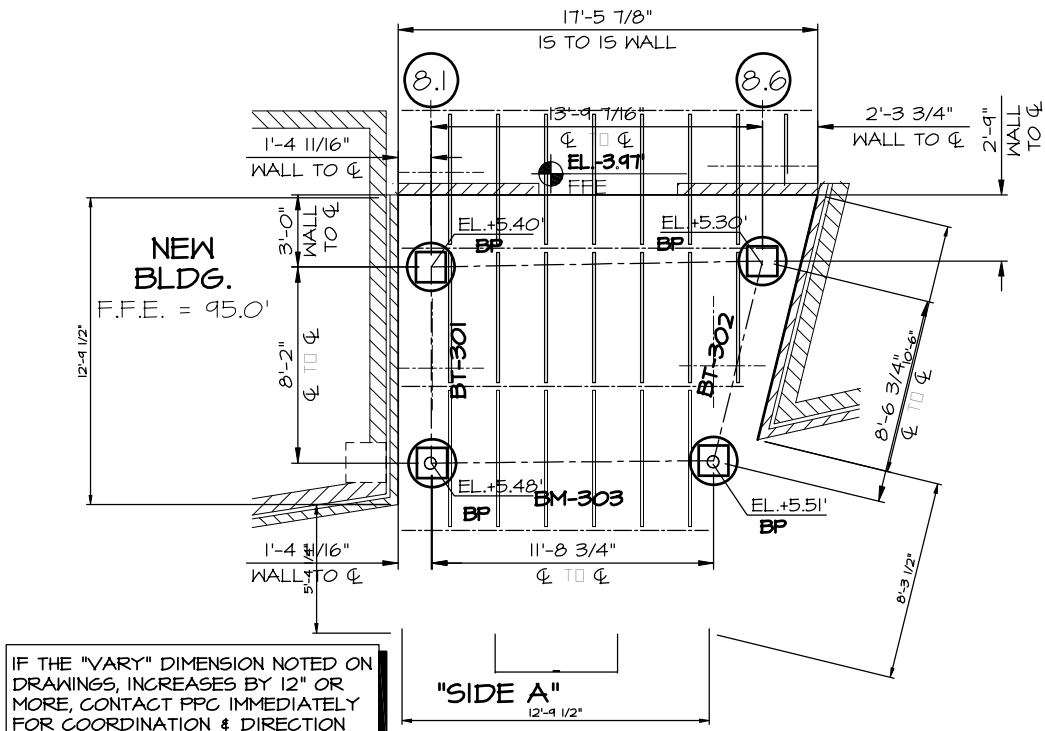
REVISIONS	
12/14/06 RLV	
7/9/07 RAP	
DRAWN: J. B.	
SCALE: AS SHOWN	
DATE: 09/29/06	
JOB #	
3997	
SHT 2 OF 9	

Drawing: 3997-5BRBDR.DWG Layout: Model Plotted: Nov 17, 2006 - 2:21pm By: rvenable

G.C. PLEASE PROVIDE SPOT ELEVATIONS INDICATED ON COLUMN SETTING PLAN.

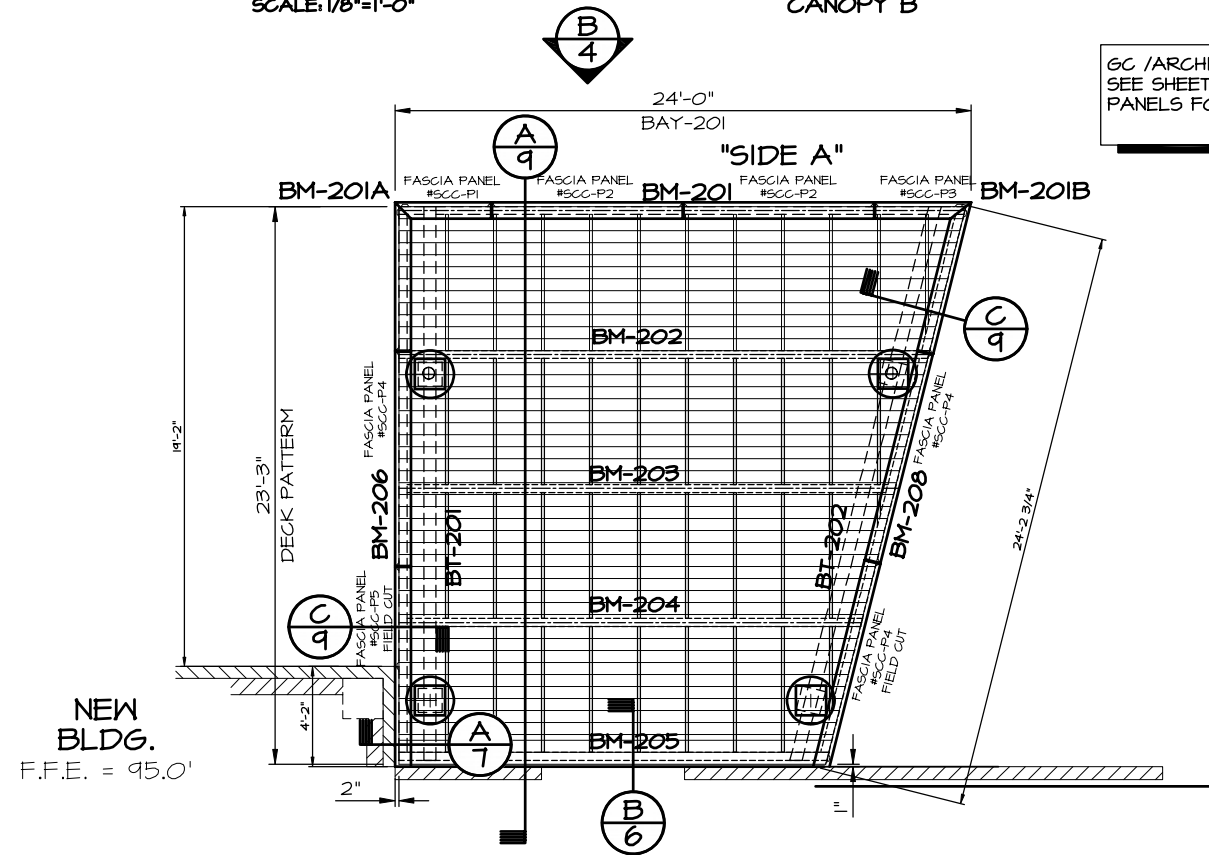


COLUMN SETTING PLAN
SCALE: 1/8"=1'-0"
CANOPY B



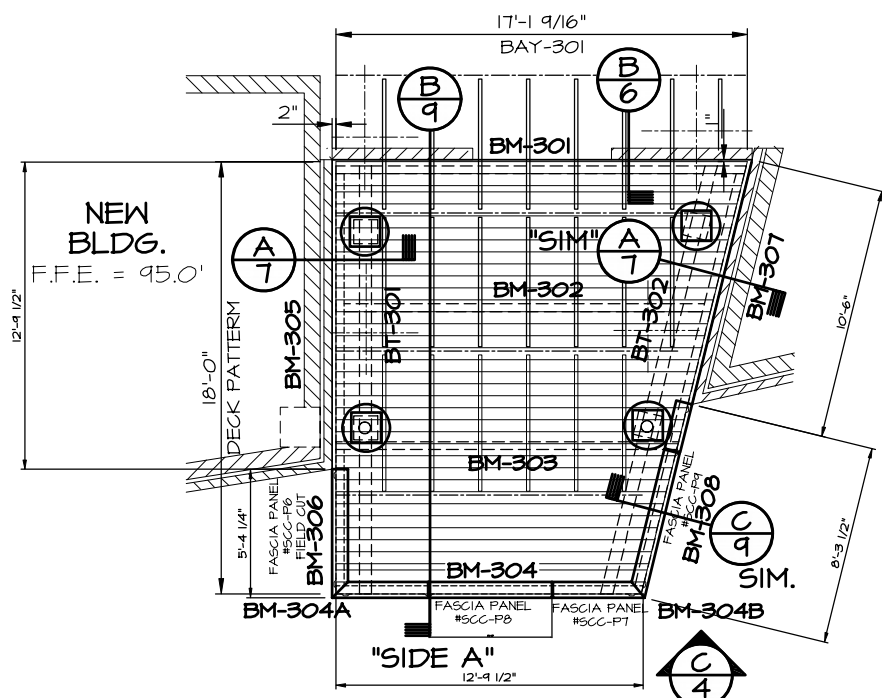
IF THE "VARY" DIMENSION NOTED ON DRAWINGS, INCREASES BY 12" OR MORE, CONTACT PPC IMMEDIATELY FOR COORDINATION & DIRECTION

COLUMN SETTING PLAN
SCALE: 1/8"=1'-0"
CANOPY C



DECK PLAN
SCALE: 1/8"=1'-0"
CANOPY B

G.C. / ARCHITECT NOTE:
SEE SHEETS 8 & 9 FOR SOFFIT PANELS FOR CANOPIES B & C ONLY



DECK PLAN
SCALE: 1/8"=1'-0"
CANOPY C

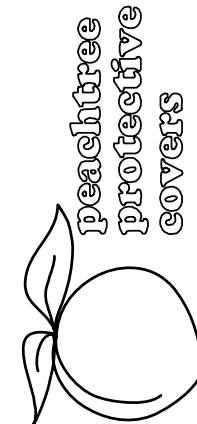
Drawing: 3997-59RBR.DWG Layout: Model Plotted: Nov 17, 2006 - 2:21pm By: rvenable



1477 ROSEDALE DRIVE PHONE (770) 439-2120
HIRAM, GA 30141 FAX (770) 439-2122

JOB NAME: SEMINOLE COMMUNITY COLLEGE CLASSROOM BUILDING
LOCATION: ALTAMONTE SPRINGS, FLORIDA
ARCHITECT: HUNTON BRADY ARCHITECTS
CONTRACTOR: CENTEX CONSTRUCTION CO.

REVISIONS	
12/14/06 RLV	7/9/07 RAP
6/5/07 RLV	8/15/07 TLW
6/20/07 RLV	
DRAWN: J. B.	
SCALE: AS SHOWN	
DATE: 09/29/06	
JOB #	
3997	
SHT 3 OF 9	



1477 ROSEDALE DRIVE PHONE (770) 439-2120
 HIRAM, GA 30141 FAX (770) 439-2122

JOB NAME: SEMINOLE COMMUNITY COLLEGE
 CLASSROOM BUILDING
 LOCATION: ALTAMONTE SPRINGS, FLORIDA
 ARCHITECT: HUNTON BRADY ARCHITECTS
 CONTRACTOR: CENTEX CONSTRUCTION CO.

REVISIONS

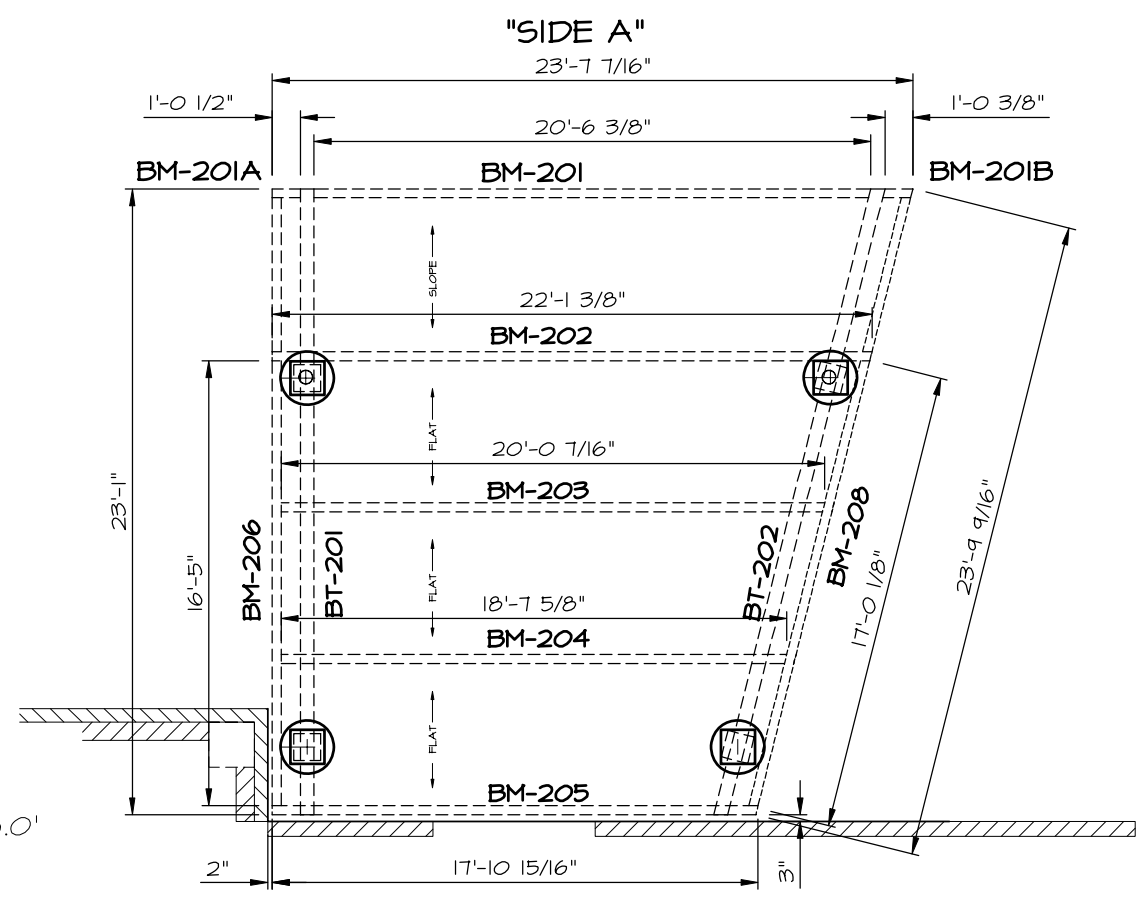
7/9/07 RAP	SHEET ADDED
8/15/07 TLW	

DRAWN: J. B.

SCALE: AS SHOWN

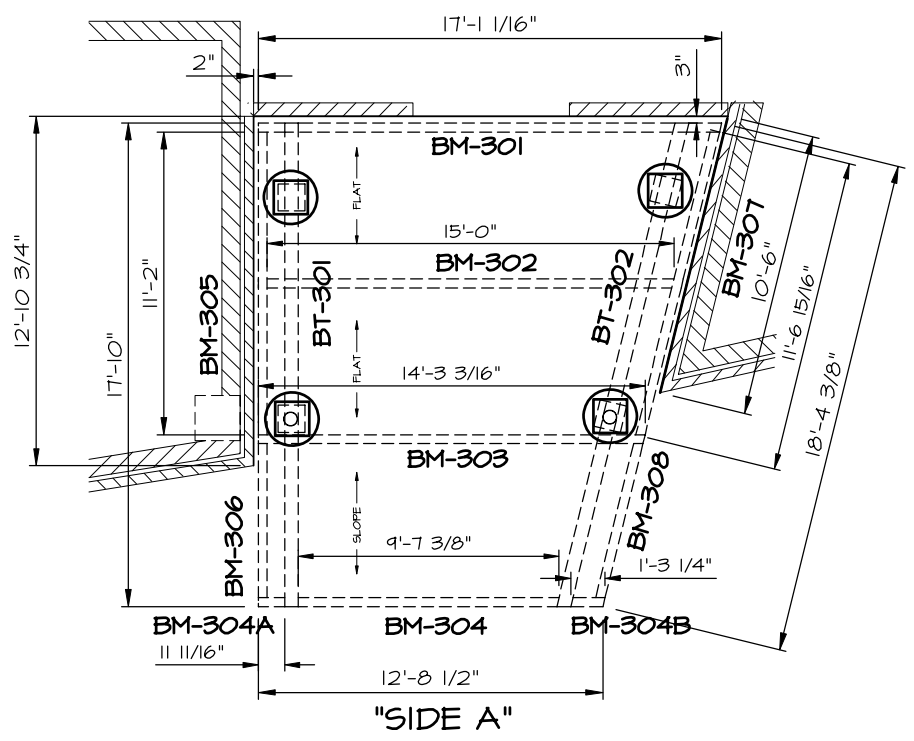
DATE: 09/29/06

JOB #
3997
 SHT 3A F 9



BEAM FRAMING PLAN
 SCALE: 1/8"=1'-0" CANOPY B

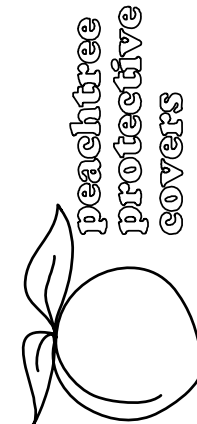
NEW BLDG.
 F.F.E. = 95.0'



BEAM FRAMING PLAN
 SCALE: 1/8"=1'-0" CANOPY C

Drawing: 3997-5BRBDR.DWG Layout: Model
 Plotted: Nov 17, 2006 - 2:21pm By: rvenable

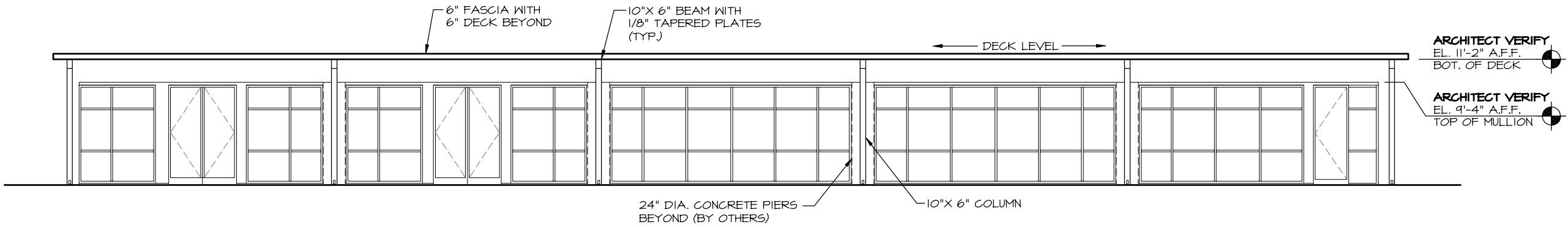
NEW BLDG.
 F.F.E. = 95.0'



peachtree
protective
covers
1477 ROSEDALE DRIVE PHONE (770) 439-2120
HIRAM, GA 30141 FAX (770) 439-2122

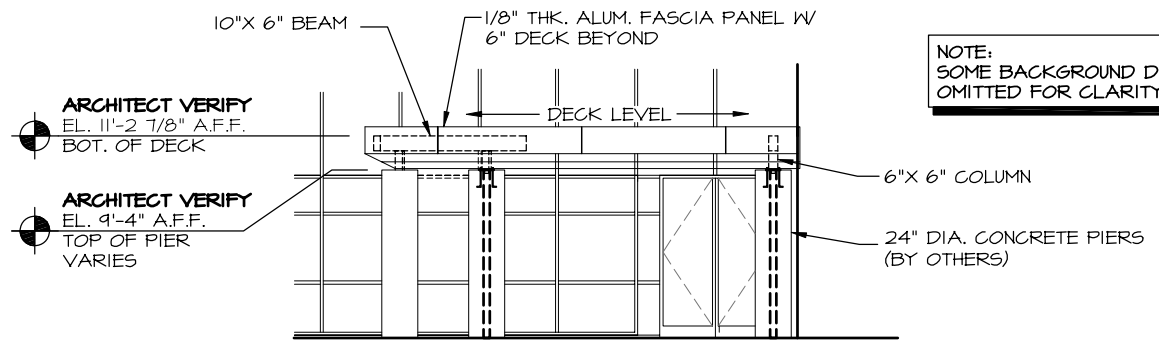
JOB NAME: SEMINOLE COMMUNITY COLLEGE
CLASSROOM BUILDING
LOCATION: ALTAMONTE SPRINGS, FLORIDA
ARCHITECT: HUNTON BRADY ARCHITECTS
CONTRACTOR: CENTEX CONSTRUCTION CO.

NOTE:
SOME BACKGROUND DETAILS
OMITTED FOR CLARITY.



A
4 ELEVATION
CANOPY A

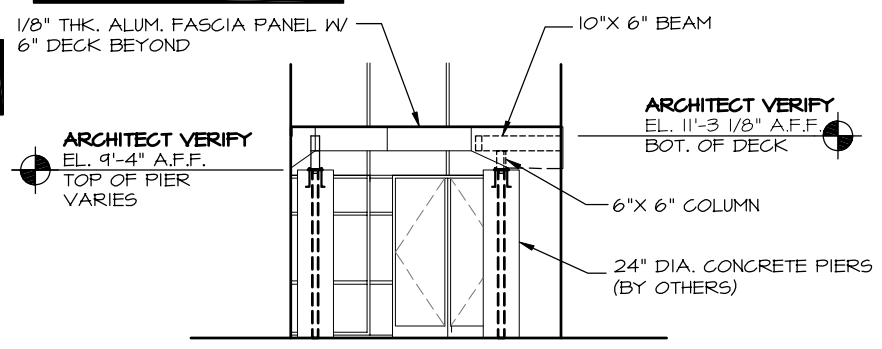
GC / ARCHITECT NOTE:
FASCIA PANEL MAX SPAN 11'-10"



B
4 ELEVATION
CANOPY B

NOTE:
SOME BACKGROUND DETAILS
OMITTED FOR CLARITY.

GC / ARCHITECT NOTE:
FASCIA PANEL MAX SPAN 11'-10"



C
4 ELEVATION
CANOPY C

REVISIONS

6/5/07 RLV	
8/15/07 TLW	

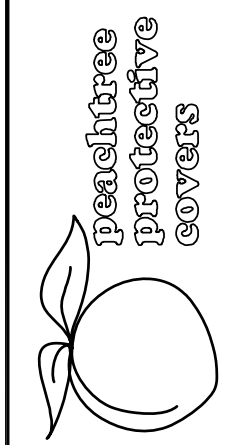
DRAWN: J. B.

SCALE: AS SHOWN

DATE: 09/29/06

JOB #
3997
SHT 4 OF 9

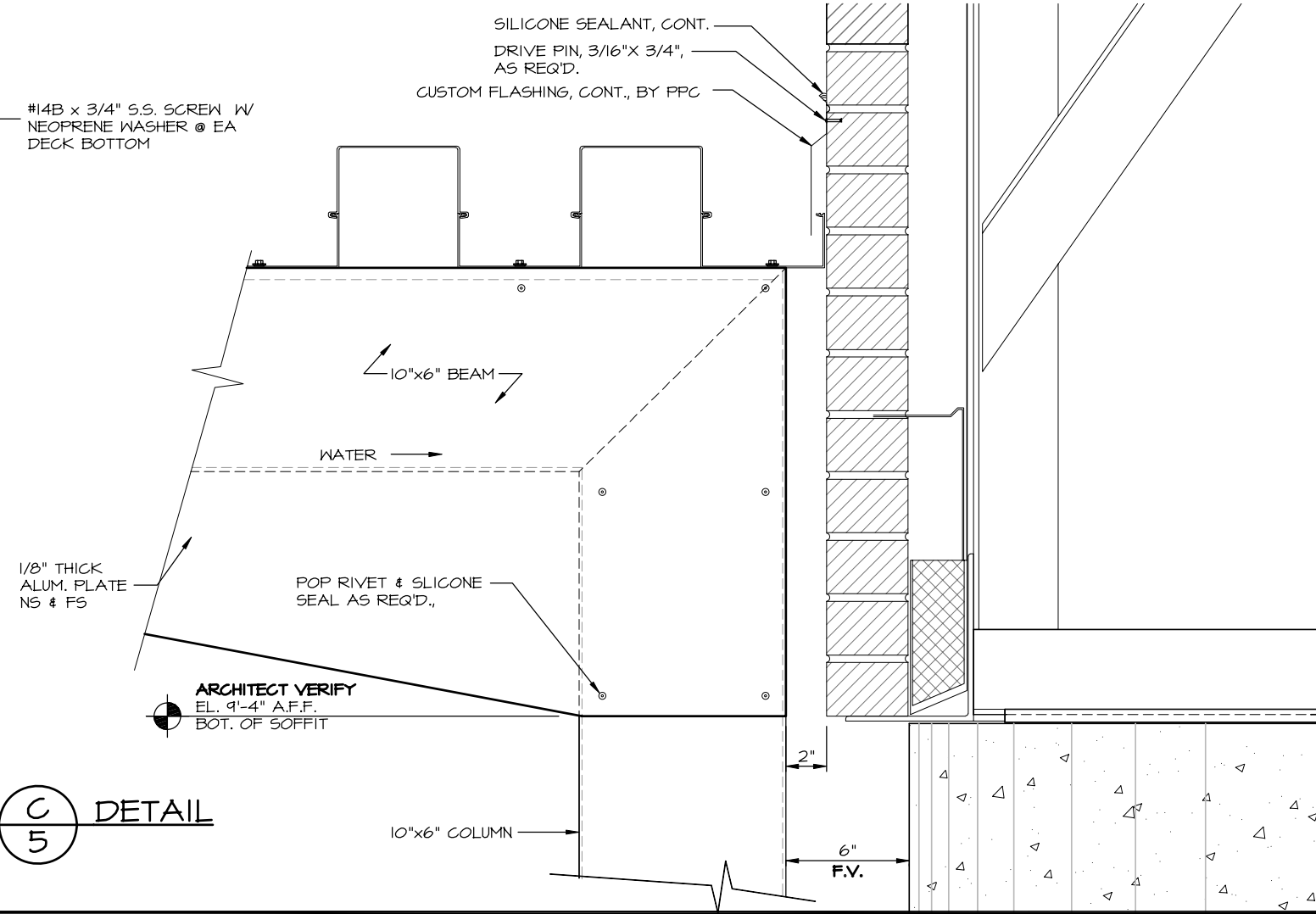
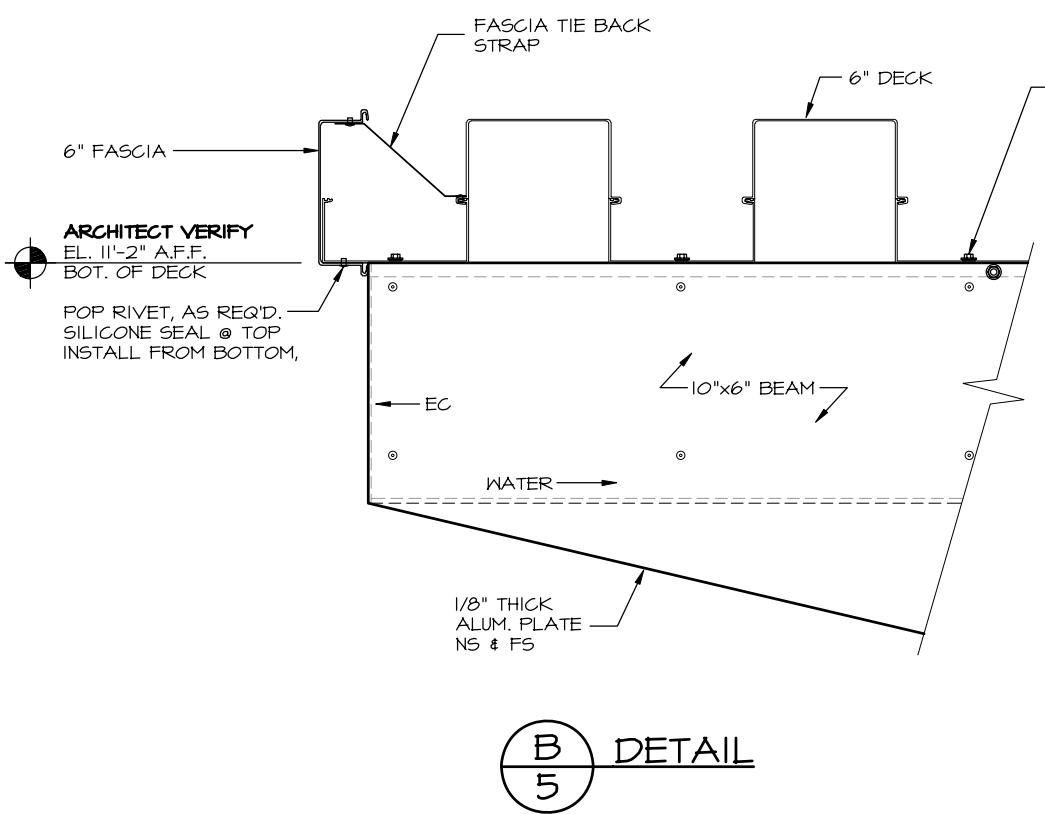
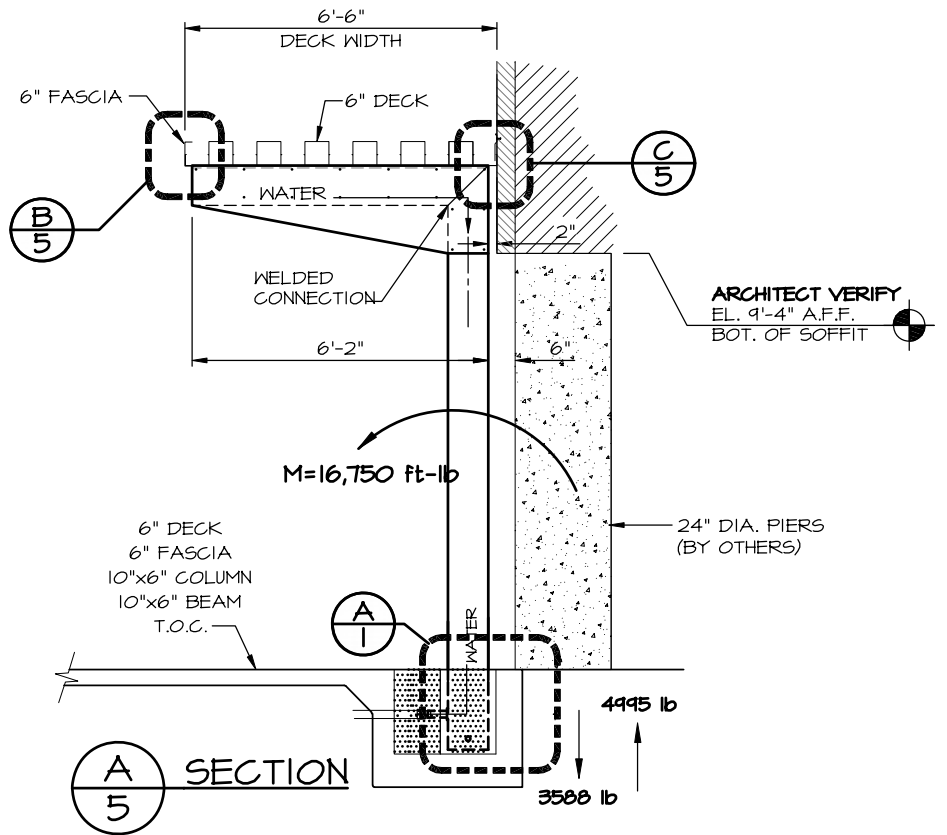
Drawing: 3997-5BRBDR.DWG Layout: Model
Plotted: Nov 17, 2006 - 2:21pm By: rvenable



1477 ROSEDALE DRIVE PHONE (770) 439-2120
 HIRAM, GA 30141 FAX (770) 439-2122

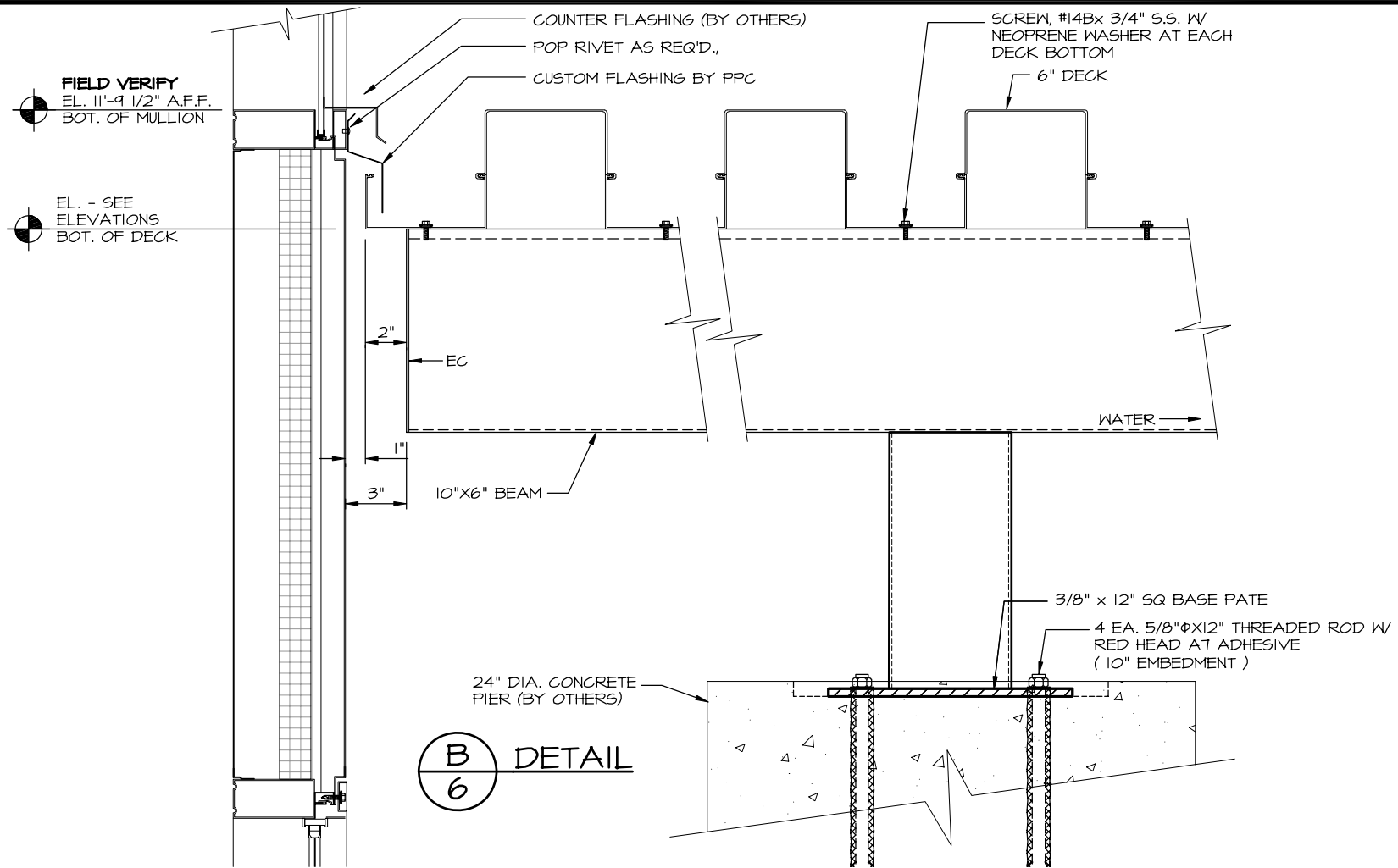
JOB NAME: SEMINOLE COMMUNITY COLLEGE
 CLASSROOM BUILDING
 LOCATION: ALTAMONTE SPRINGS, FLORIDA
 ARCHITECT: HUNTON BRADY ARCHITECTS
 CONTRACTOR: CENTEX CONSTRUCTION CO.

REVISIONS	
12/14/06 RLV	
8/15/07 TLM	
DRAWN: J. B.	
SCALE: AS SHOWN	
DATE: 09/29/06	
JOB #	
3997	
SHT 5 OF 9	

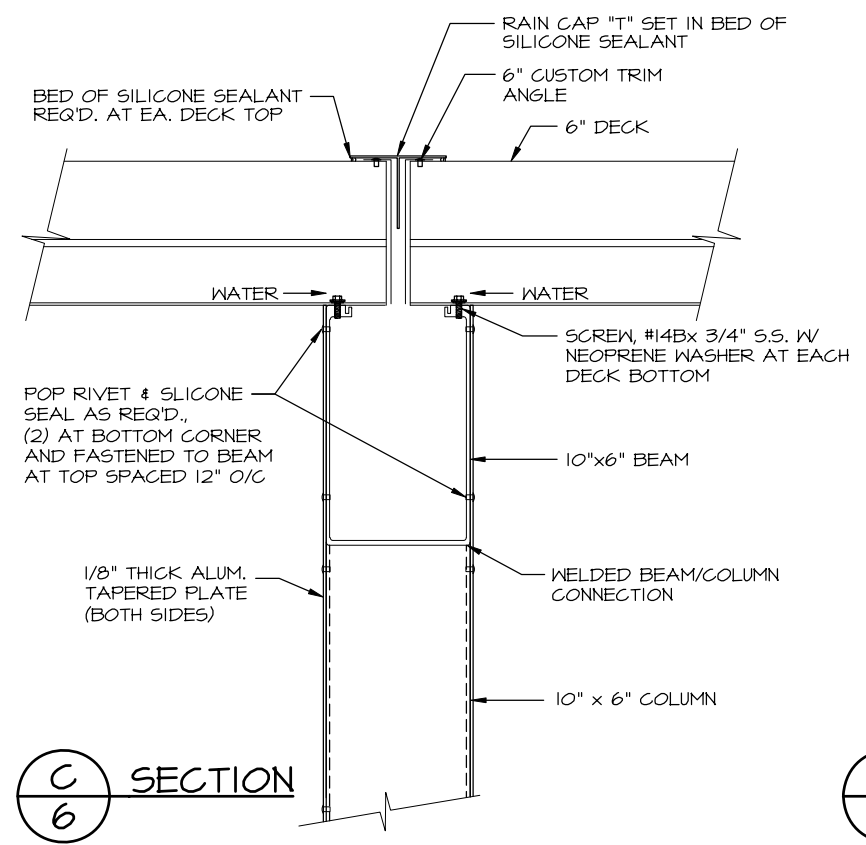


Drawing: 3997-5BRBRD.DWG Layout: Model
 Plotted: Nov 17, 2006 - 2:21pm By: rvenable

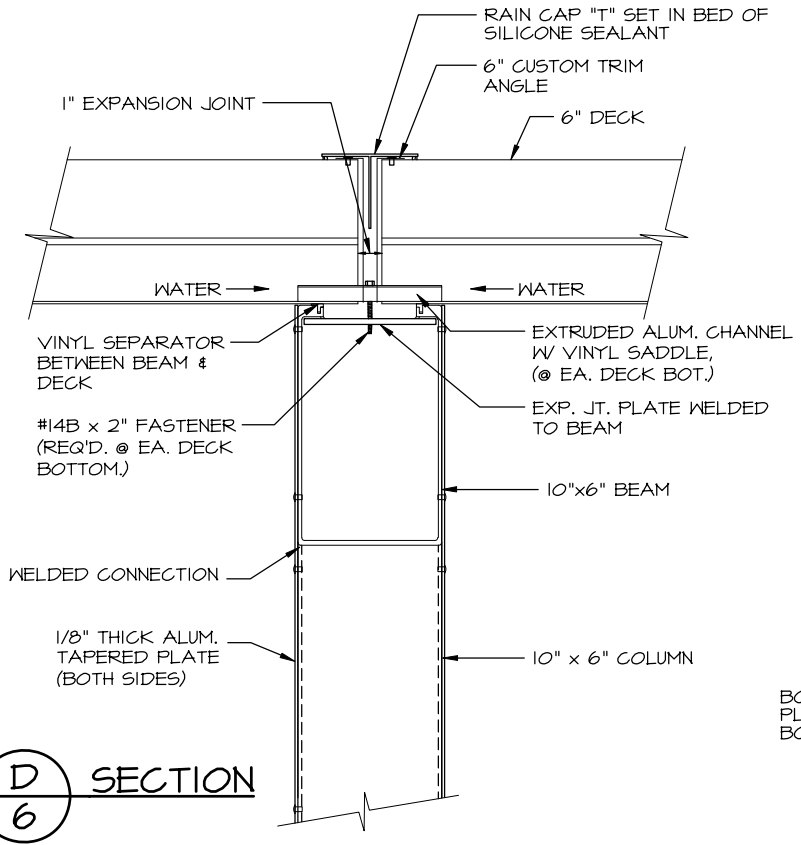
SECTION A/6
NOT USED



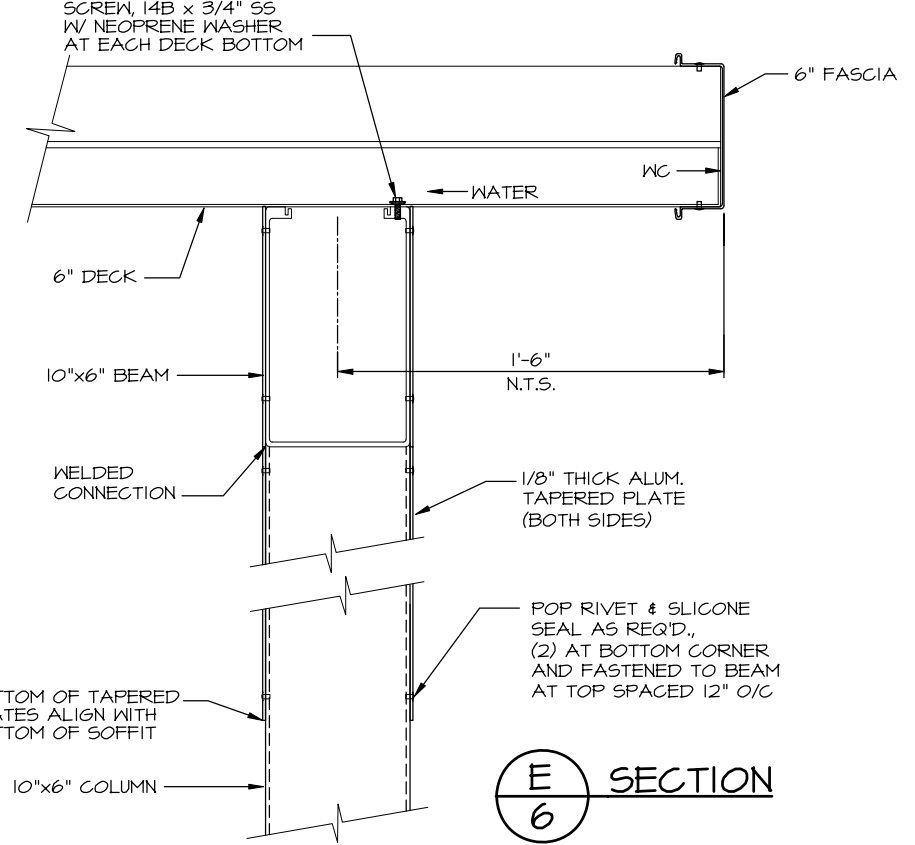
B
6
DETAIL



C
6
SECTION



D
6
SECTION



E
6
SECTION

Drawing: 3997-5BRBDR.DWG Layout: Model Plotted: Nov 17, 2006 - 2:21pm By: rvenable



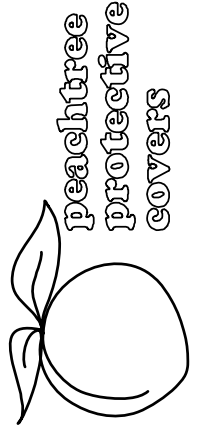
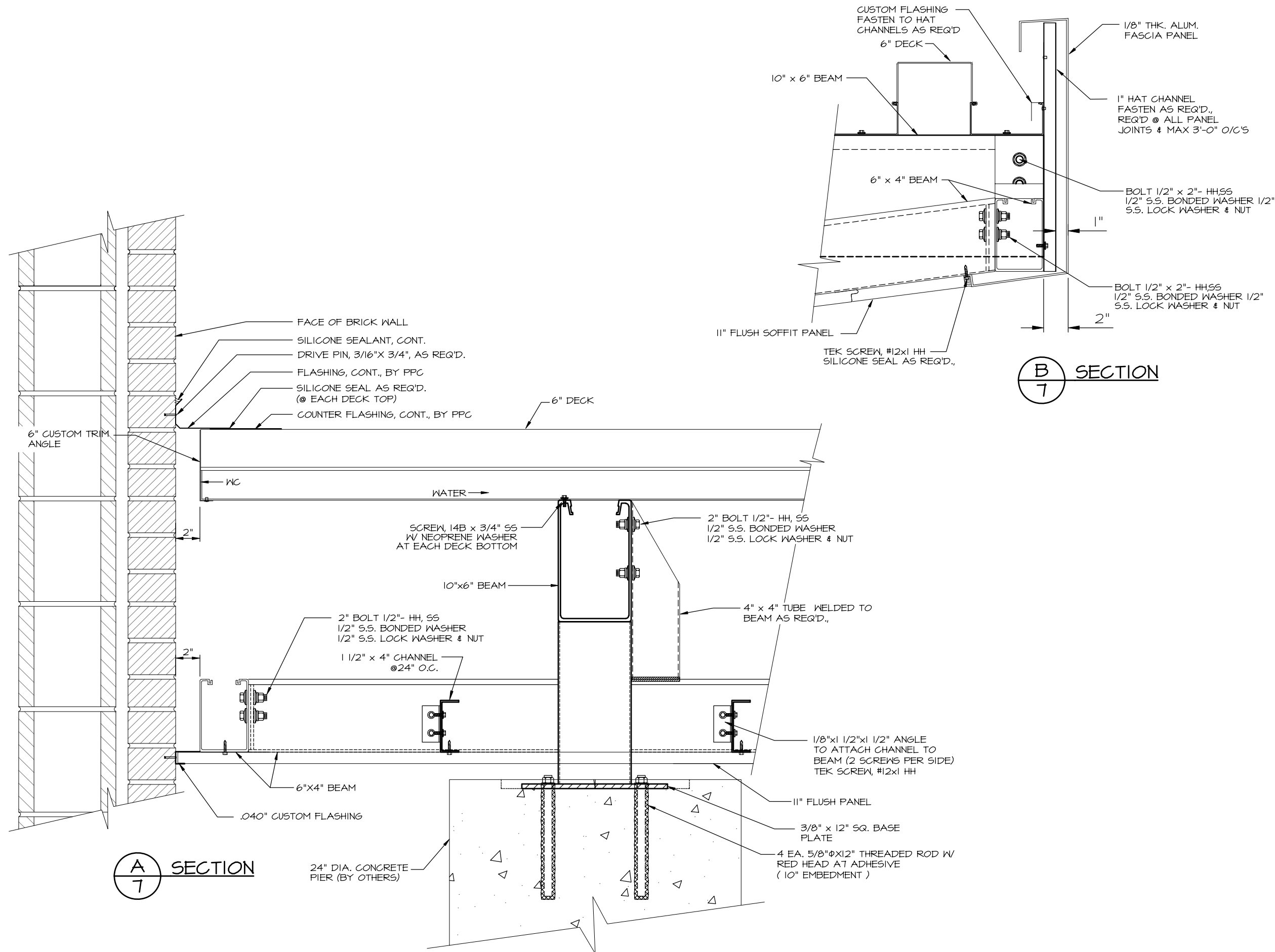
1477 ROSEDALE DRIVE PHONE (770) 439-2120
HIRAM, GA 30141 FAX (770) 439-2122

JOB NAME: SEMINOLE COMMUNITY COLLEGE CLASSROOM BUILDING
LOCATION: ALTAMONTE SPRINGS, FLORIDA
ARCHITECT: HUNTON BRADY ARCHITECTS
CONTRACTOR: CENTEX CONSTRUCTION CO.

REVISIONS	
12/14/06 RLV	
6/5/07 RLV	
8/15/07 TLW	

DRAWN: J. B.
SCALE: AS SHOWN
DATE: 09/29/06
JOB #
3997
SHT 6 OF 9

Drawing: 3997-5BRBDR.DWG Layout: Model
 Plotted: Nov 17, 2006 - 2:21pm By: rvenable



1477 ROSEDALE DRIVE PHONE (770) 439-2120
 HIRAM, GA 30141 FAX (770) 439-2122

JOB NAME: SEMINOLE COMMUNITY COLLEGE CLASSROOM BUILDING
LOCATION: ALTAMONTE SPRINGS, FLORIDA
ARCHITECT: HUNTON BRADY ARCHITECTS
CONTRACTOR: CENTEX CONSTRUCTION CO.

REVISIONS

12/14/06 RLV	8/15/07 TLW
6/5/07 RLV	
7/4/07 RAP	

DRAWN: J. B.

SCALE: AS SHOWN

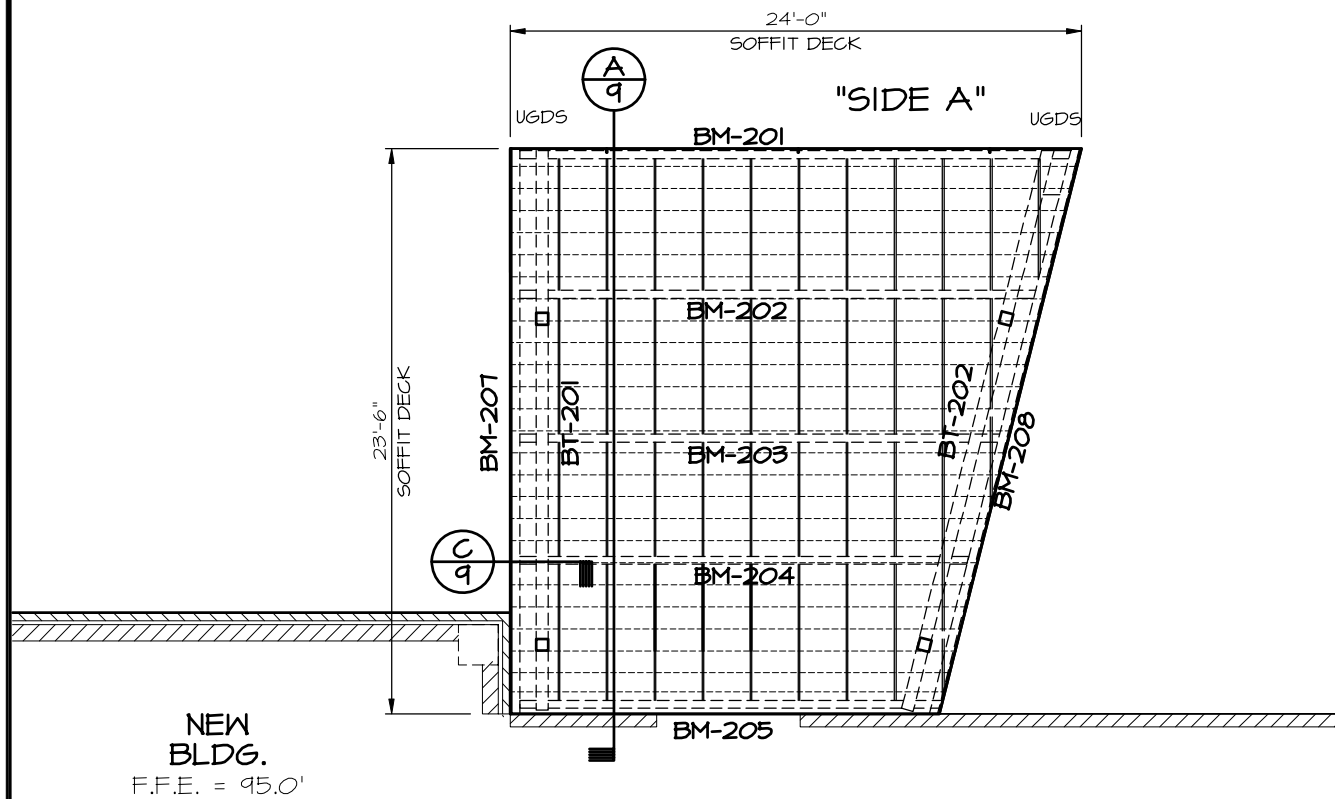
DATE: 09/29/06

JOB #

3997

SHT 7 OF 9

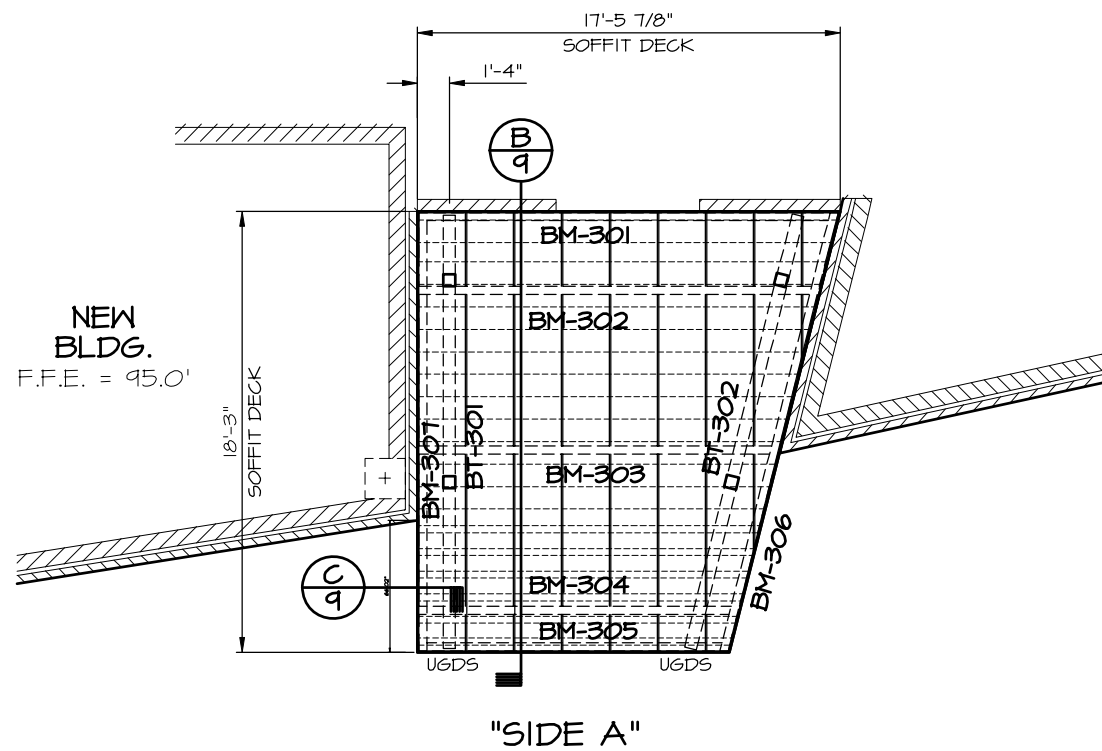
Drawing: 3997-5BRBDR.DWG Layout: Model
 Plotted: Nov 17, 2006 - 2:21pm By: rvenable



PANEL PLAN VIEW

SCALE: 1/8"=1'-0"

CANOPY B



PANEL PLAN VIEW

SCALE: 1/8"=1'-0"

CANOPY C



peachtree
 protective
 covers
 1477 ROSEDALE DRIVE PHONE (770) 439-2120
 HIRAM, GA 30141 FAX (770) 439-2122

JOB NAME: SEMINOLE COMMUNITY COLLEGE
 CLASSROOM BUILDING
 LOCATION: ALTAMONTE SPRINGS, FLORIDA
 ARCHITECT: HUNTON BRADY ARCHITECTS
 CONTRACTOR: CENTEX CONSTRUCTION CO.

REVISIONS

12/14/06	RLV	
6/5/07	RLV	
7/9/07	RAP	

DRAWN: J. B.

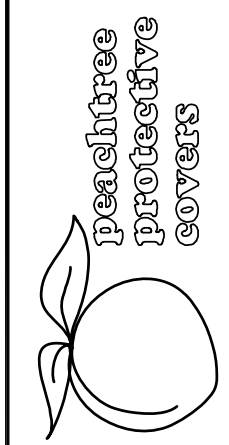
SCALE: AS SHOWN

DATE: 09/29/06

JOB #

3997

SHT 8 OF 9

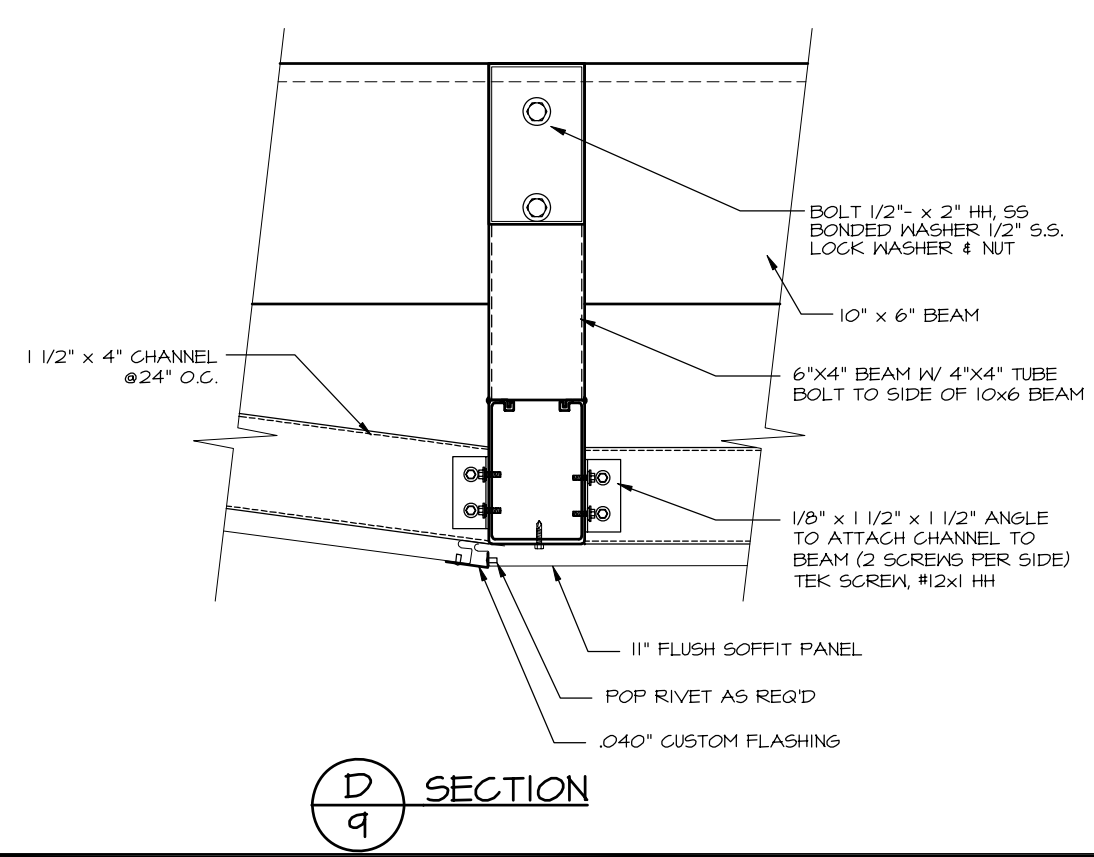
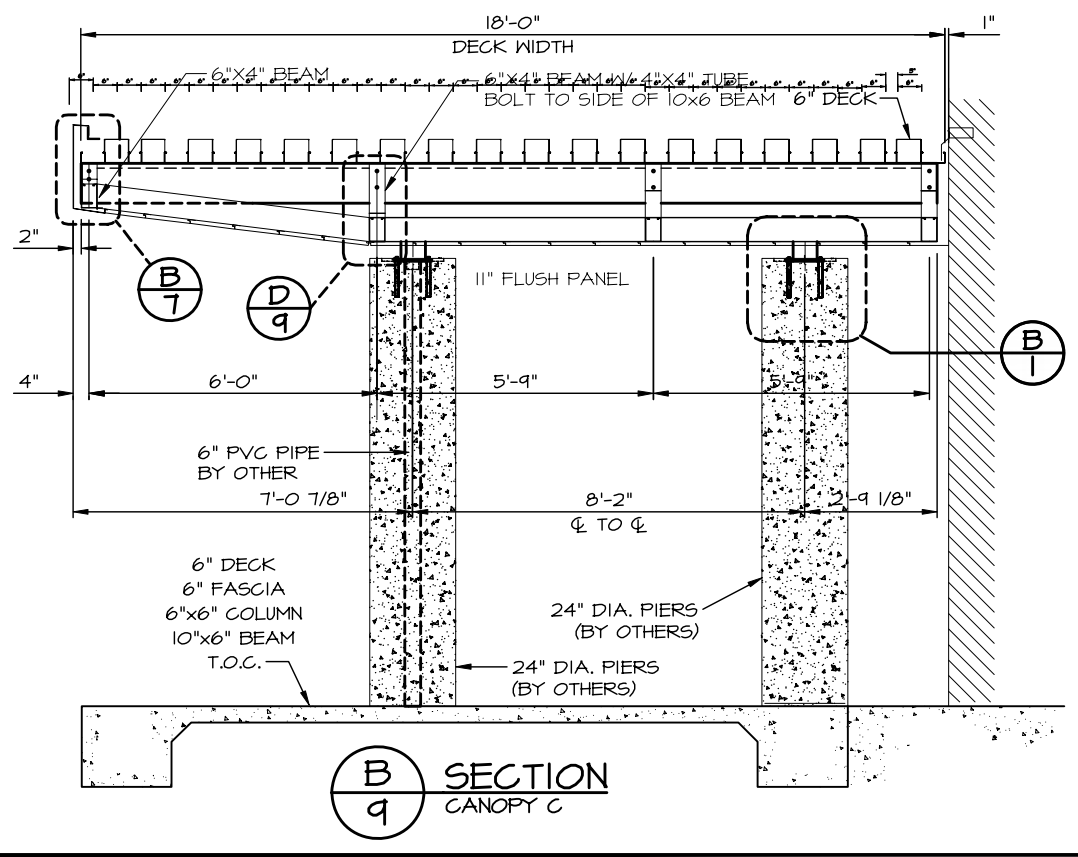
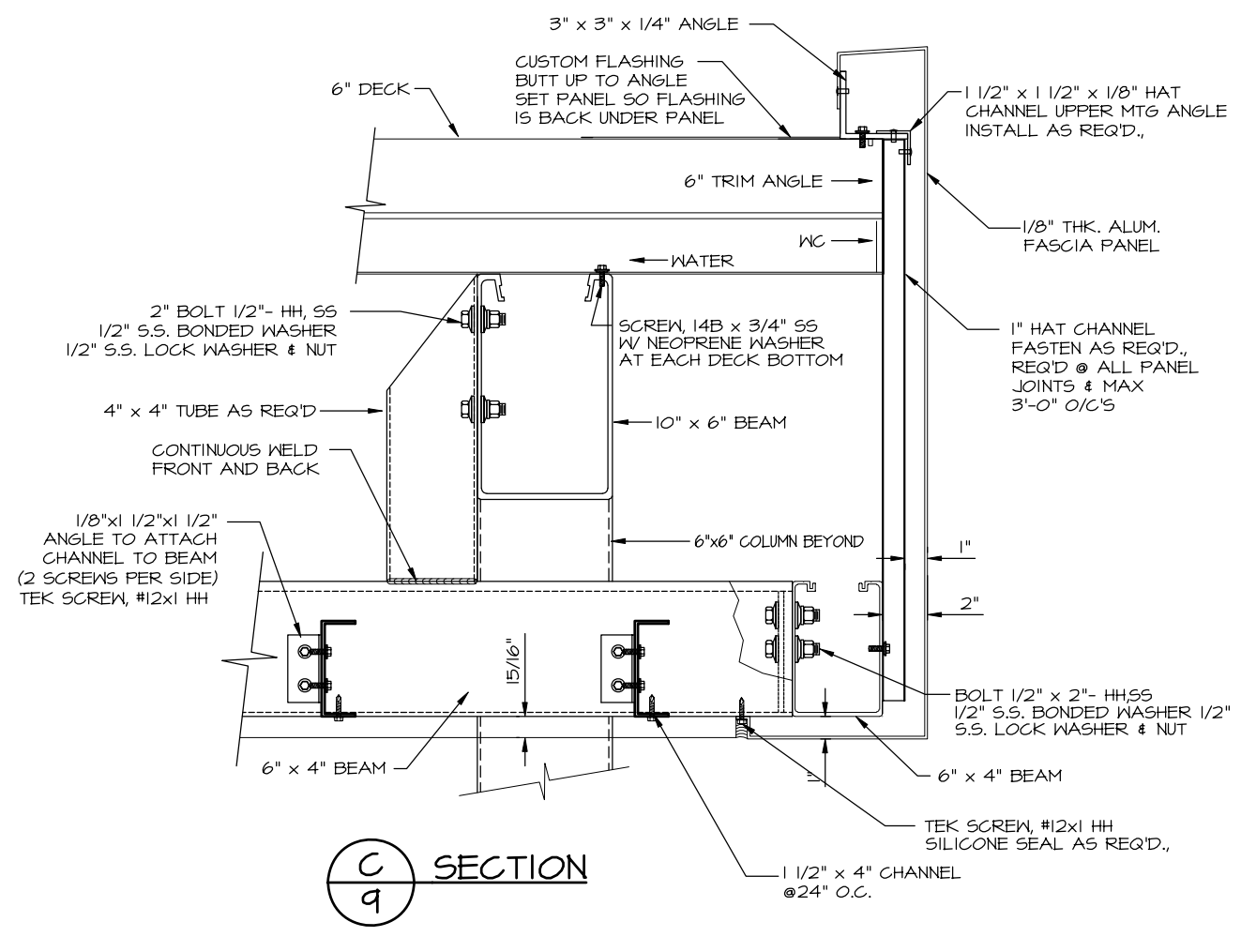
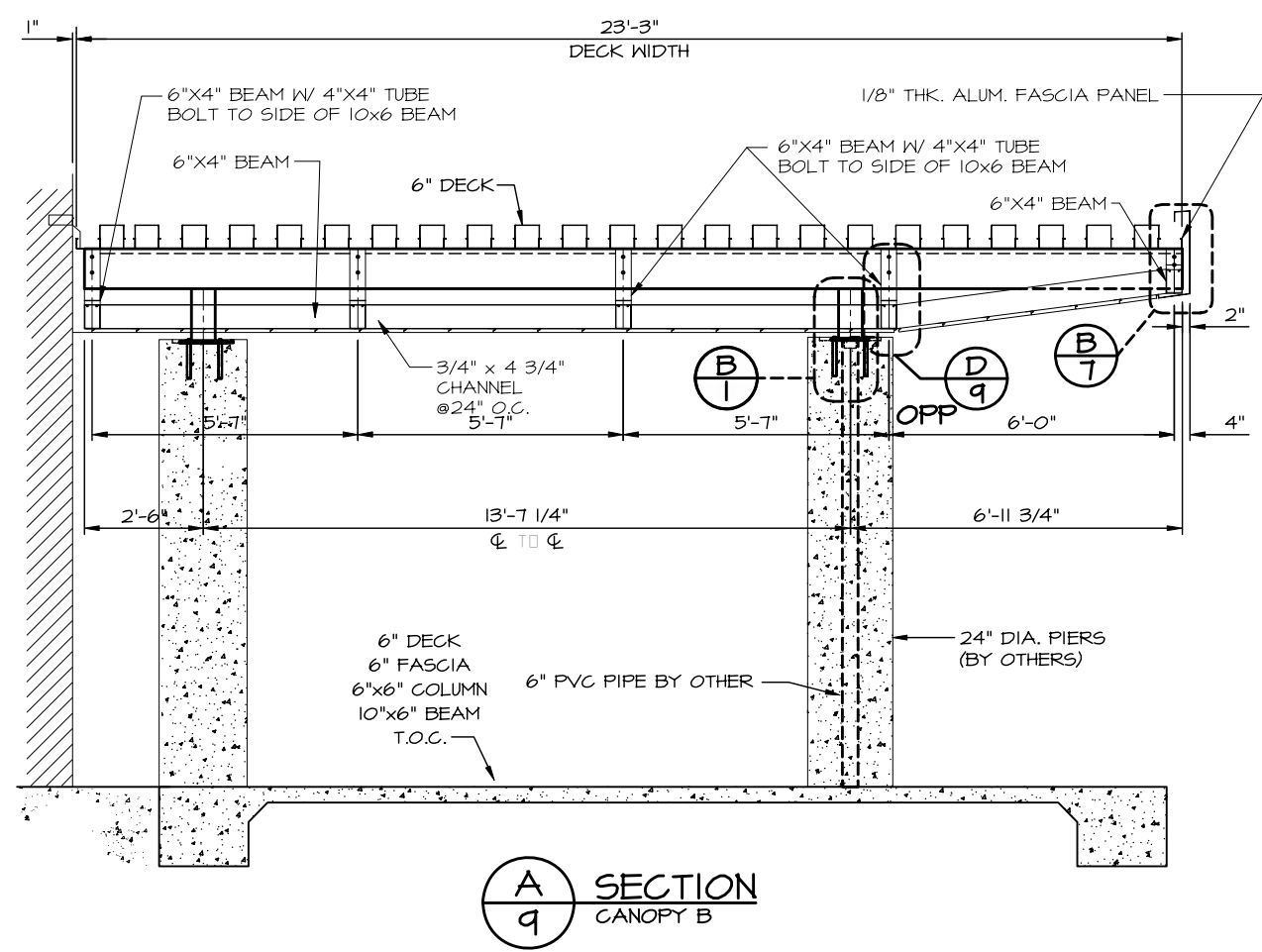


1477 ROSEDALE DRIVE PHONE (770) 439-2120
 HIRAM, GA 30141 FAX (770) 439-2122

JOB NAME: SEMINOLE COMMUNITY COLLEGE CLASSROOM BUILDING
LOCATION: ALTAMONTE SPRINGS, FLORIDA
ARCHITECT: HUNTON BRADY ARCHITECTS
CONTRACTOR: CENTEX CONSTRUCTION CO.

REVISIONS	
12/14/06 RLV	8/15/07 TLW
6/5/07 RLV	
7/9/07 RAP	

DRAWN: J. B.
SCALE: AS SHOWN
DATE: 09/29/06
JOB #
3997
 SHT 9 OF 9



Drawing: 3997-5BRBDR.DWG Layout: Model
 Plotted: Nov 17, 2006 - 2:21pm By: ryenble

