

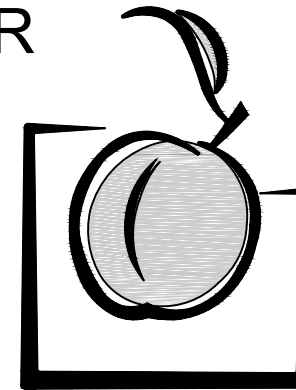
JOB NAME: LIPSCOMB UNIVERSITY - McADAMS ATHLETIC CENTER

CUSTOMER: SOLOMON BUILDERS, INC.

ARCHITECT: TUCK HINTON ARCHITECTS

LOCATION: NASHVILLE, TN

JOB NUMBER: 6344 - CANOPY



Peachtree
PROTECTIVE COVERS

1477 ROSEDALE DRIVE • HIRAM, GA 30141 • PHONE (770) 439-2120 • FAX (770) 439-2122

ERECTION DRAWING GENERAL NOTES:

FABRICATION NOTE:

PPC WILL FIELD MEASURE THE SITE PRIOR TO FABRICATION OF THE CANOPY SYSTEM. FIELD MEASUREMENTS WILL BE TAKEN RELATIVE TO FINISHED FLOOR, AND RELATIVE TO THE SKIN OF THE BUILDING TO WHICH OUR SYSTEM WILL BE CONNECTED. FIELD MEASUREMENTS ARE TYPICALLY A REQUIREMENT OF THE SPECIFICATION AND ARE REQUIRED IN ORDER TO INSURE THAT THE CANOPY SYSTEM IS CONSTRUCTED TO FIT ACTUAL JOB SITE CONDITIONS. DUE TO THE NATURE OF EXTRUDED ALUMINUM CANOPY DESIGN, THE SYSTEM CANNOT BE "FABRICATED TO APPROVED SHOP DRAWINGS".

FINISH NOTE:

WITHIN THE FINISH SCHEDULE ON SHEET #1, PPC HAS INDICATED THE FINISH AND COLOR THAT WE UNDERSTAND TO BE THE ARCHITECT'S INTENT. THIS FINISH SCHEDULE IS IN ACCORDANCE WITH OUR PROPOSAL. APPROVAL OF THE SHOP DRAWINGS WITHOUT COMMENT IN THIS AREA WILL BE INTERPRETED AS APPROVAL OF THE FINISH/COLOR INDICATED. WHERE APPLICABLE A COLOR CHART IS PROVIDED FOR USE IN SELECTING PAINT COLOR. THE STANDARD COLORS OFFERED BY PPC ARE MARKED ON THIS CHART. TO AVOID ADDITIONAL COSTS AND/OR SCHEDULE DELAYS, IT IS IMPORTANT TO SELECT FROM THESE STANDARD COLORS WHEN THE FINISH SCHEDULE INDICATES THAT A STANDARD COLOR IS WARRANTED. IN CASES WHERE A CUSTOM COLOR OR A MATCH OF A PARTICULAR COLOR IS REQUIRED, PPC WILL REQUIRE A SAMPLE OF THAT COLOR TO MATCH. IN THESE INSTANCES A "MATCH SAMPLE" WILL BE PROVIDED BY PPC FOR THE ARCHITECT TO ACCEPT OR REJECT. MATERIALS CANNOT BE ORDERED UNTIL THIS "MATCH SAMPLE" IS ACCEPTED.

ATTACHMENT NOTE:

IN ACCORDANCE WITH OUR UNDERSTANDING OF THE CONTRACT DOCUMENTS, PPC HAS DETAILED THE CONNECTIONS TO ADJACENT STRUCTURE TO THE BEST OF OUR ABILITY. ALL CONNECTION DETAILS NEED TO BE REVIEWED BY THE GC, ARCHITECT AND STRUCTURAL ENGINEER. PLEASE PROVIDED ANY/ALL REQUESTED INFORMATION SO AS TO ASSURE OUR CANOPY (OR SUNSCREEN) CAN BE SUPPORTED PROPERLY. IF ANY QUESTIONS, PLEASE CONTACT PPC PROJECT MANAGEMENT.

DRAWING INDEX

G1	COVER SHEET
1.00	KEY-PLAN
1.01-1.02	HANGER CANOPY
1.51-1.53	BOLT SETTING ELEVATIONS
2.00-2.02	ELEVATIONS
3.00-3.01	SECTIONS
4.00-4.02	ENLARGED DETAILS
6.00	FASTENER SCHEDULE

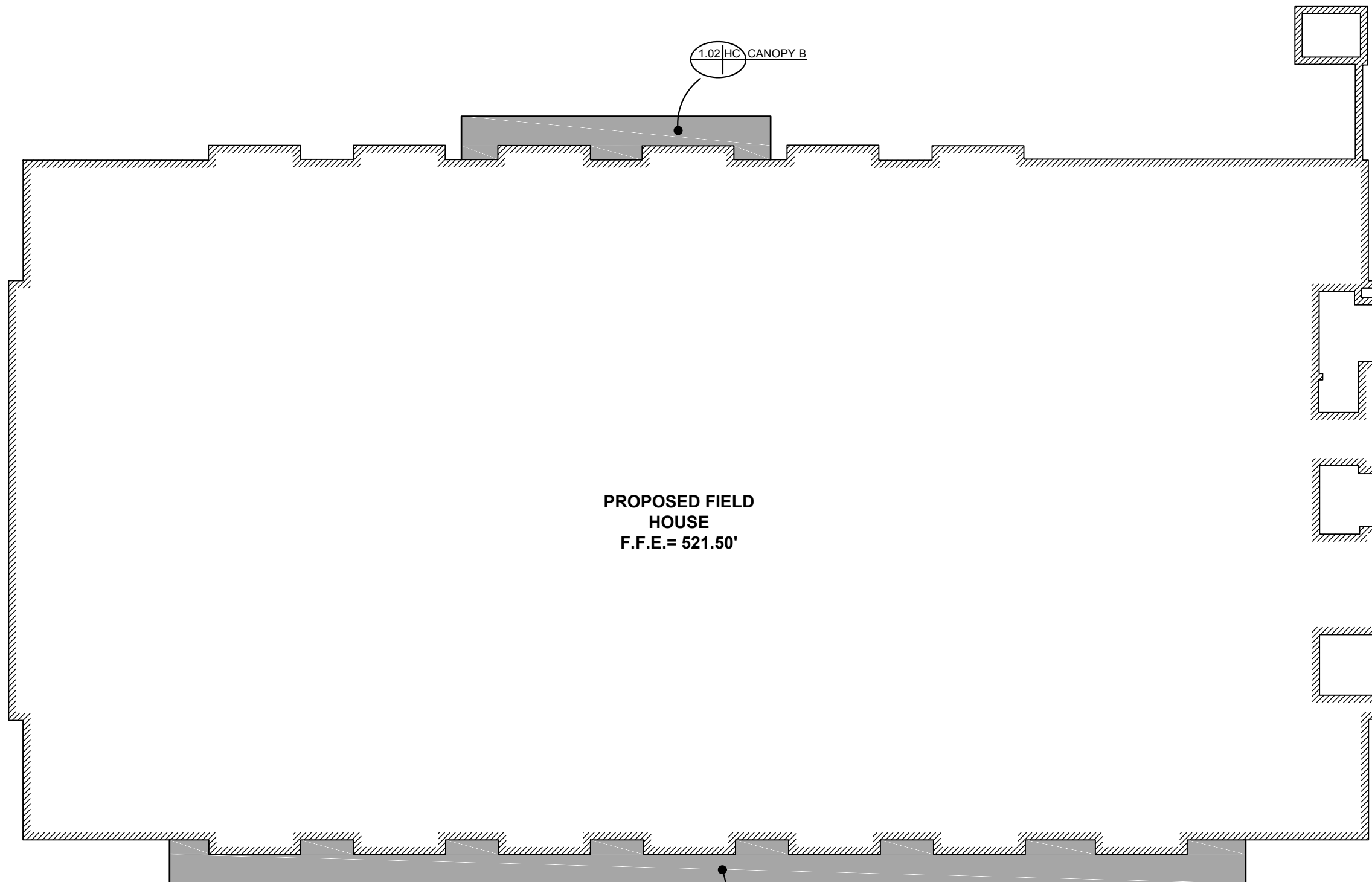
REVISION HISTORY

REV.	DATE	DESCRIPTION	DWN
	1/27/16	1ST SUBMITTAL	VECTRE
1	4/1/16	HANGER LOCATIONS / CAN. SIZE	VECTRE
2	5/6/16	INITIAL FILE AND FIELD	VECTRE
3	6/28/16	INCORPORATE FIELD DIMS	HP

MATERIAL SPECIFICATION

LOCATION	DESCRIPTION	FINISH	COLOR
CANOPIES A & B	8" x 4" GUTTER FASCIA	ANODIZED	CLEAR, A31
	2 1/2" x 6" FS DECK	ANODIZED	CLEAR, A31
	1 1/2"x1 1/2" HANGER TUBE	ANODIZED	CLEAR, A31

DATE:	1/27/16
DWN. BY:	VECTRE
CHKD. BY:	RW-PPC
DRAWING NO.	G.1
PPC JOB NO.	6344

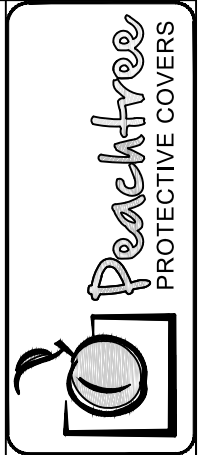


PROPOSED FIELD HOUSE
F.F.E. = 521.50'

1.02 HC CANOPY B

1.01 HC CANOPY A

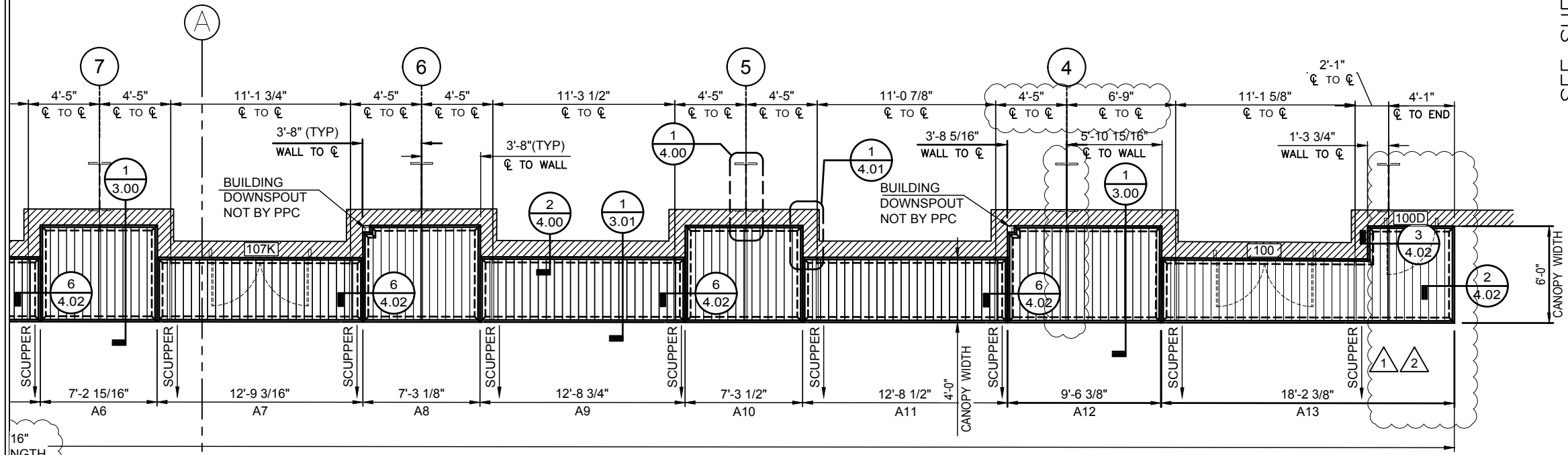
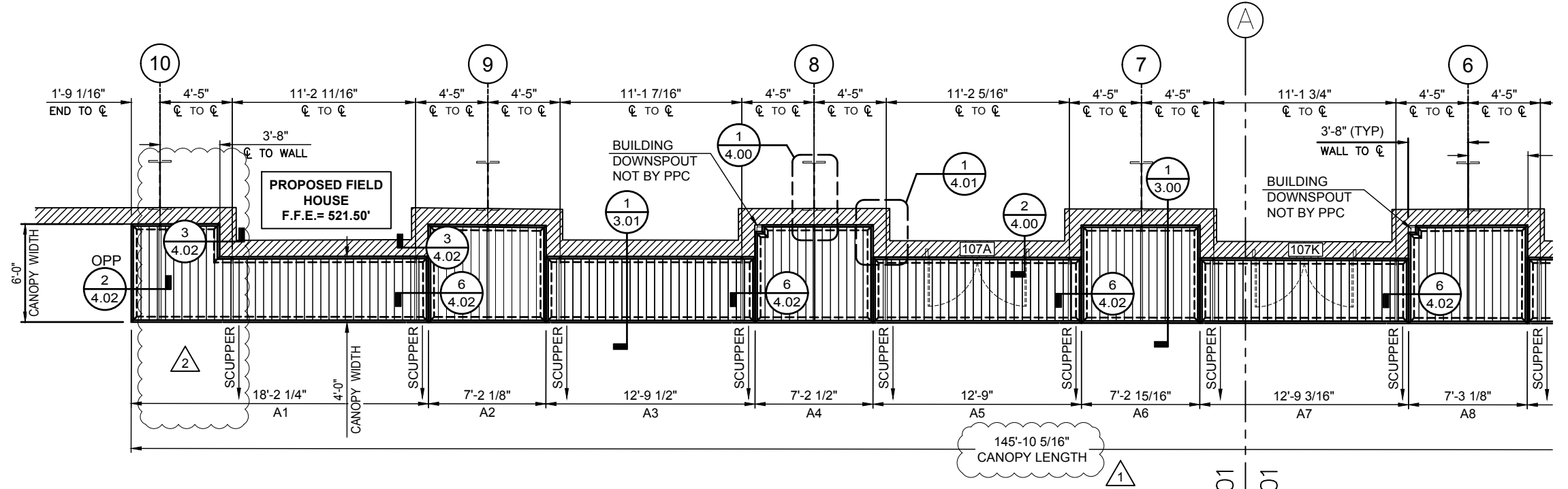
1 CANOPY PLAN VIEW
 1.01 SCALE: 1/16"=1'-0" CANOPIES: A & B
 REF.: A111, A112 & A113



DWG. BY	
SUBJECT	
DATE	
REV.	

PROJECT: LIPSCOMB UNIVERSITY - MCADAMS ATHLETIC CENTER
 CUSTOMER: SOLOMON BUILDERS, INC.
 ARCHITECT: TUCK HINTON ARCHITECTS
 LOCATION: NASHVILLE, TN

DATE:	1/27/16
DWN. BY:	VECTRE
CHKD. BY:	RW-PPC
DRAWING NO.:	1.00
PPC JOB NO.:	6344

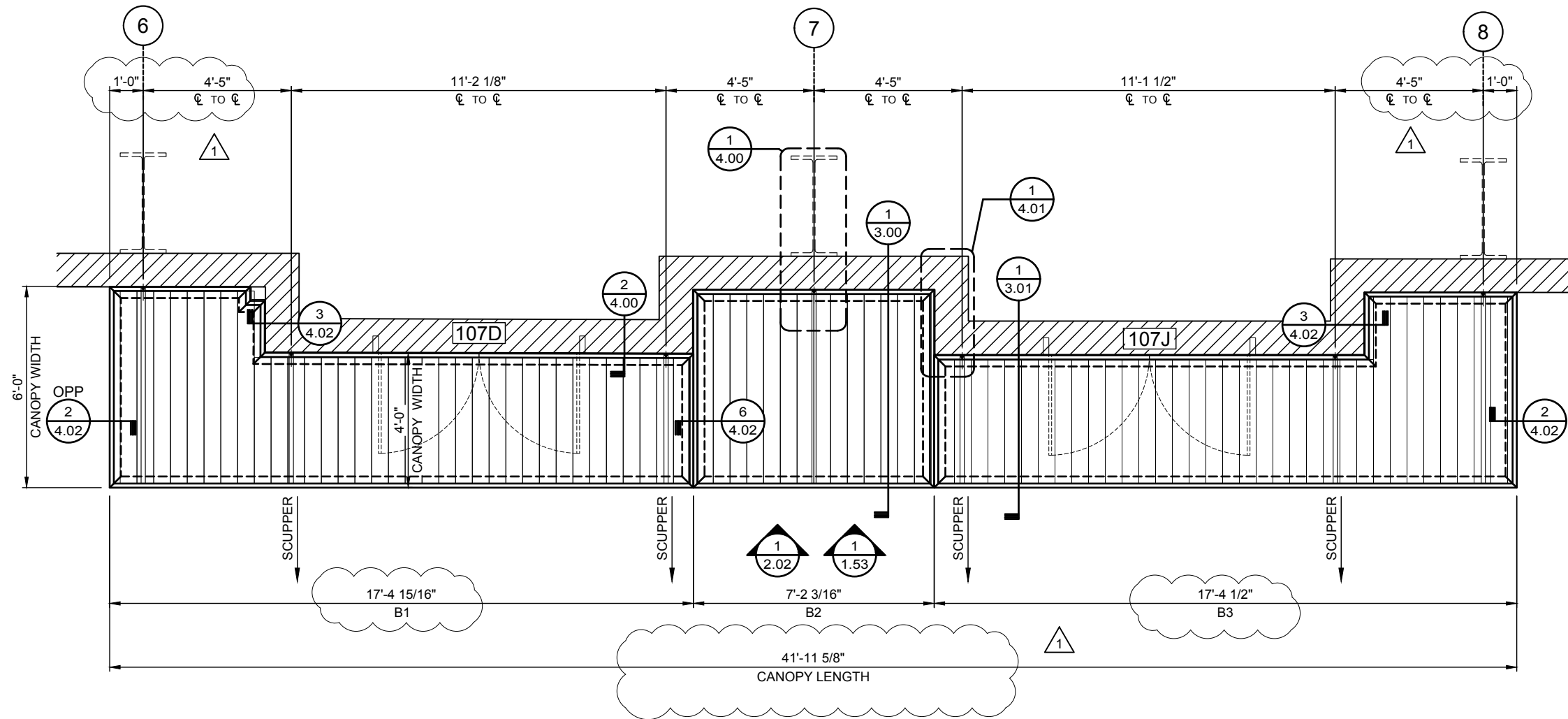


SEE SHEET 1.01
SEE SHEET 1.01

16" NGTH
SEE SHEET 1.01
SEE SHEET 1.01

DWG. BY	VT
SUBJECT	HANGER LOCATIONS / CAN. SIZE
DATE	4/1/16
REV.	1

PROJECT:	LIPSCOMB UNIVERSITY - MCADAMS ATHLETIC CENTER
CUSTOMER:	SOLOMON BUILDERS, INC.
ARCHITECT:	TUCK HINTON ARCHITECTS
LOCATION:	NASHVILLE, TN
DATE:	1/27/16
DWN. BY:	VECTRE
CHKD. BY:	RW-PPC
DRAWING NO.:	1.01
PPC JOB NO.:	6344



1 CANOPY PLAN VIEW
 1.02 SCALE: 1/4"=1'-0" CANOPY: B
 REF.: A111, A112 & A113

DWG. BY	VT
SUBJECT	HANGER LOCATIONS / CAN. SIZE
DATE	4/1/16
REV.	1

PROJECT: LIPSCOMB UNIVERSITY - MCADAMS ATHLETIC CENTER
 CUSTOMER: SOLOMON BUILDERS, INC.
 ARCHITECT: TUCK HINTON ARCHITECTS
 LOCATION: NASHVILLE, TN

DATE:	1/27/16
DWN. BY:	VECTRE
CHKD. BY:	RW-PPC
DRAWING NO.:	1.02
PPC JOB NO.:	6344



NOTE:
CONTRACTOR TO CONFIRM
0'-0" = 521.50' COORDINATE
WITH SUBCONTRACTOR

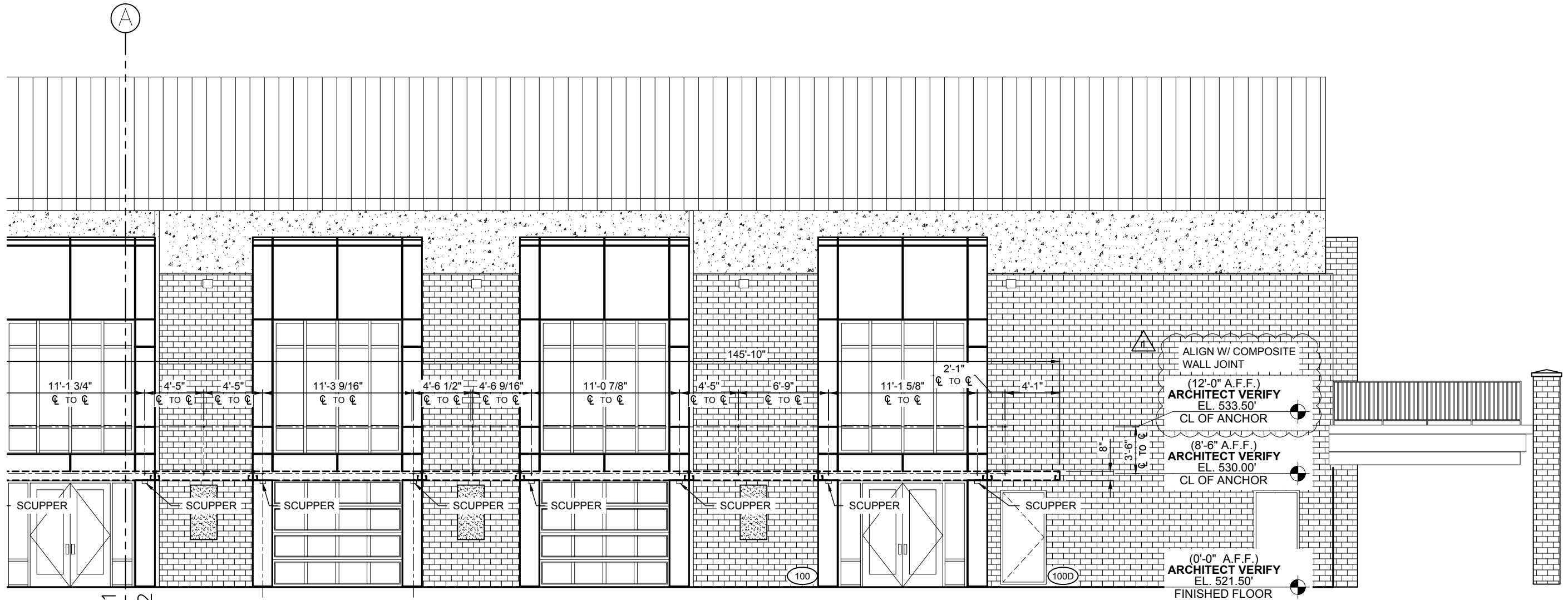
1
1.51 CANOPY BOLT SETTING ELEVATION
SCALE: 1/8"=1'-0" CANOPY: A
REF.: -

ALIGN
SCUPPERS ON
℄, TYPICAL

SEE SHEET 1.51
SEE SHEET 1.52

DWG. BY	VT
DATE	4/1/16
REV.	1
SUBJECT	HANGER LOCATIONS / CAN. SIZE

PROJECT:	LIPSCOMB UNIVERSITY - MCADAMS ATHLETIC CENTER
CUSTOMER:	SOLOMON BUILDERS, INC.
ARCHITECT:	TUCK HINTON ARCHITECTS
LOCATION:	NASHVILLE, TN
DATE:	1/27/16
DWN. BY:	VECTRE
CHKD. BY:	RW-PPC
DRAWING NO.:	1.51
PPC JOB NO.:	6344



SEE SHEET 1.51
SEE SHEET 1.52

ALIGN SCUPPERS ON \u2113, TYPICAL

1
1.52 CANOPY BOLT SETTING ELEVATION
SCALE: 1/8"=1'-0" CANOPY: A
REF.: -

DWG. BY	VT
SUBJECT	HANGER LOCATIONS / CAN. SIZE
DATE	4/1/16
REV.	1

PROJECT: LIPSCOMB UNIVERSITY - MCADAMS ATHLETIC CENTER
 CUSTOMER: SOLOMON BUILDERS, INC.
 ARCHITECT: TUCK HINTON ARCHITECTS
 LOCATION: NASHVILLE, TN

DATE:	1/27/16
DWN. BY:	VECTRE
CHKD. BY:	RW-PPC
DRAWING NO.:	1.52
PPC JOB NO.:	6344



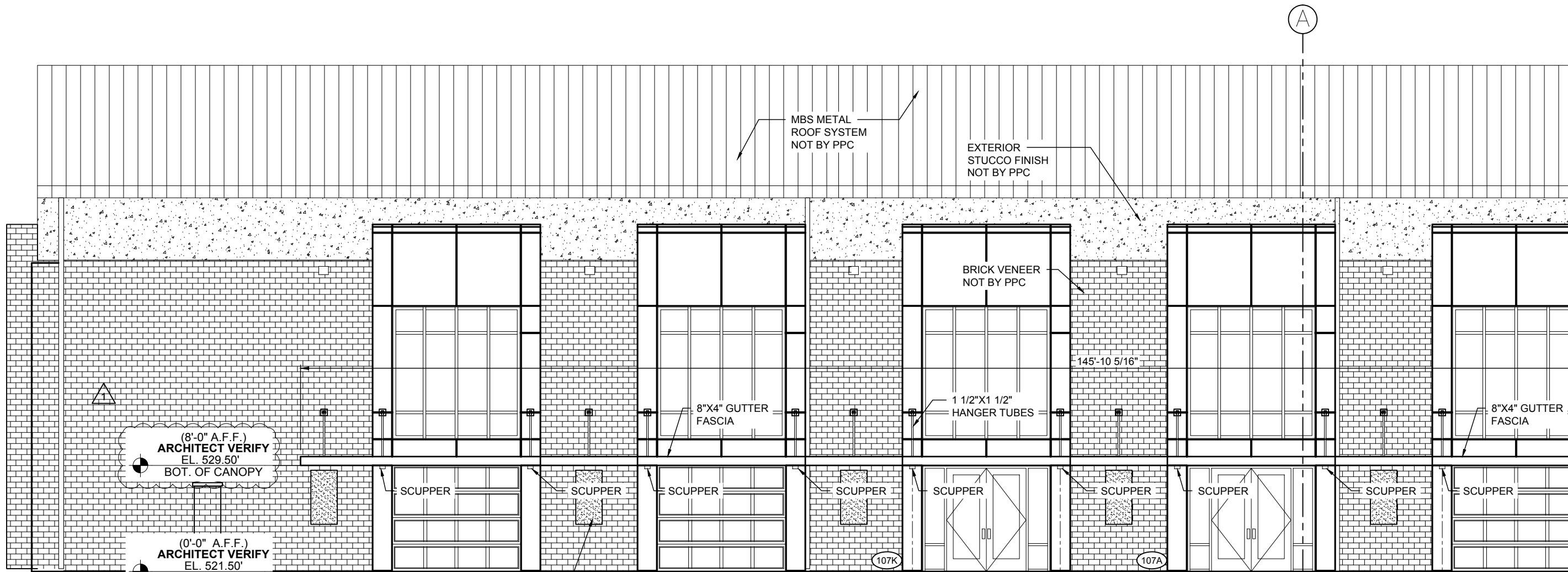
ALIGN SCUPPERS ON CL, TYPICAL

1
1.53 CANOPY BOLT SETTING ELEVATION
SCALE: 3/16"=1'-0" CANOPY: B
REF.: -

DWG. BY	VT
DATE	4/1/16
REV.	1
SUBJECT	HANGER LOCATIONS / CAN. SIZE

PROJECT: LIPSCOMB UNIVERSITY - MCADAMS ATHLETIC CENTER
 CUSTOMER: SOLOMON BUILDERS, INC.
 ARCHITECT: TUCK HINTON ARCHITECTS
 LOCATION: NASHVILLE, TN

DATE:	1/27/16
DWN. BY:	VECTRE
CHKD. BY:	RW-PPC
DRAWING NO.:	1.53
PPC JOB NO.:	6344



(8'-0" A.F.F.)
ARCHITECT VERIFY
EL. 529.50'
BOT. OF CANOPY

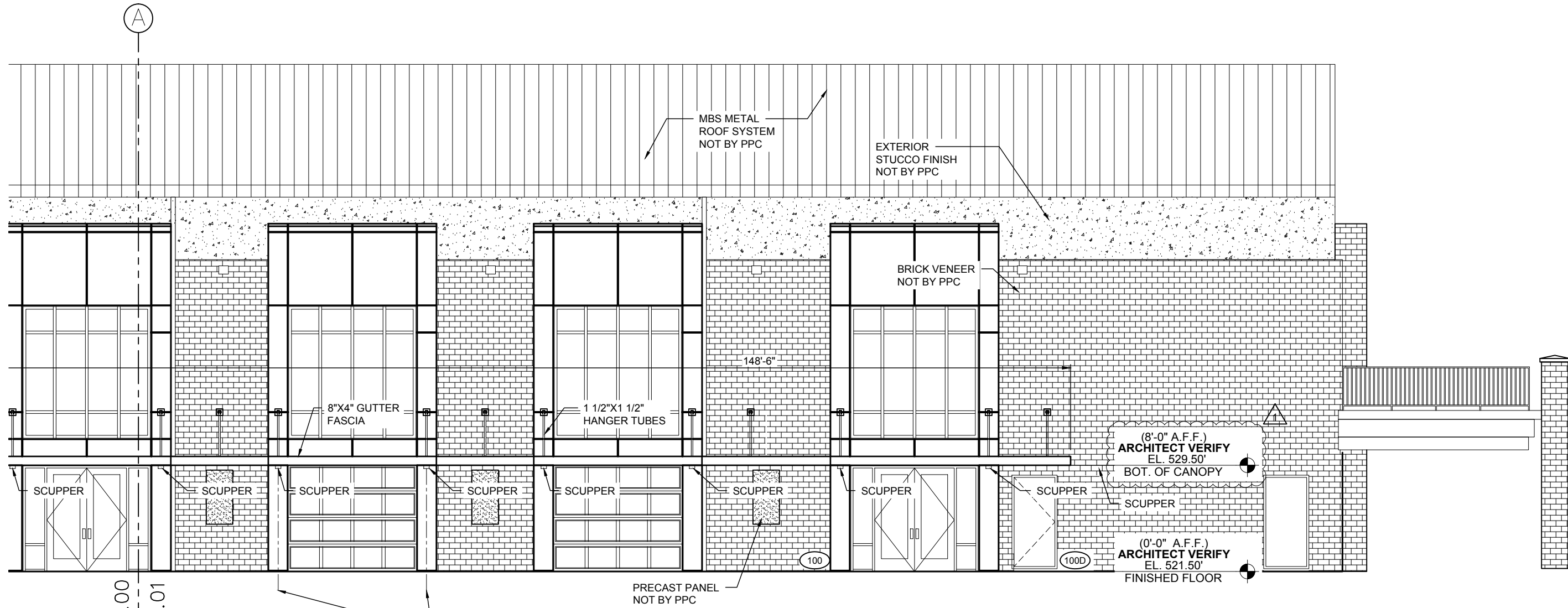
(0'-0" A.F.F.)
ARCHITECT VERIFY
EL. 521.50'
FINISHED FLOOR

1
2.00 ELEVATION
SCALE: 1/8"=1'-0" CANOPY: A
REF.: 1B/A201

ALIGN
SCUPPERS ON
℄, TYPICAL

SEE SHEET 2.00
SEE SHEET 2.01

DWG. BY	VT
SUBJECT	HANGER LOCATIONS / CAN. SIZE
DATE	4/1/16
REV.	1
PROJECT	LIPSCOMB UNIVERSITY - MCADAMS ATHLETIC CENTER
CUSTOMER	SOLOMON BUILDERS, INC.
ARCHITECT	TUCK HINTON ARCHITECTS
LOCATION	NASHVILLE, TN
DATE	1/27/16
DWN. BY	VECTRE
CHKD. BY	RW-PPC
DRAWING NO.	2.00
PPC JOB NO.	6344

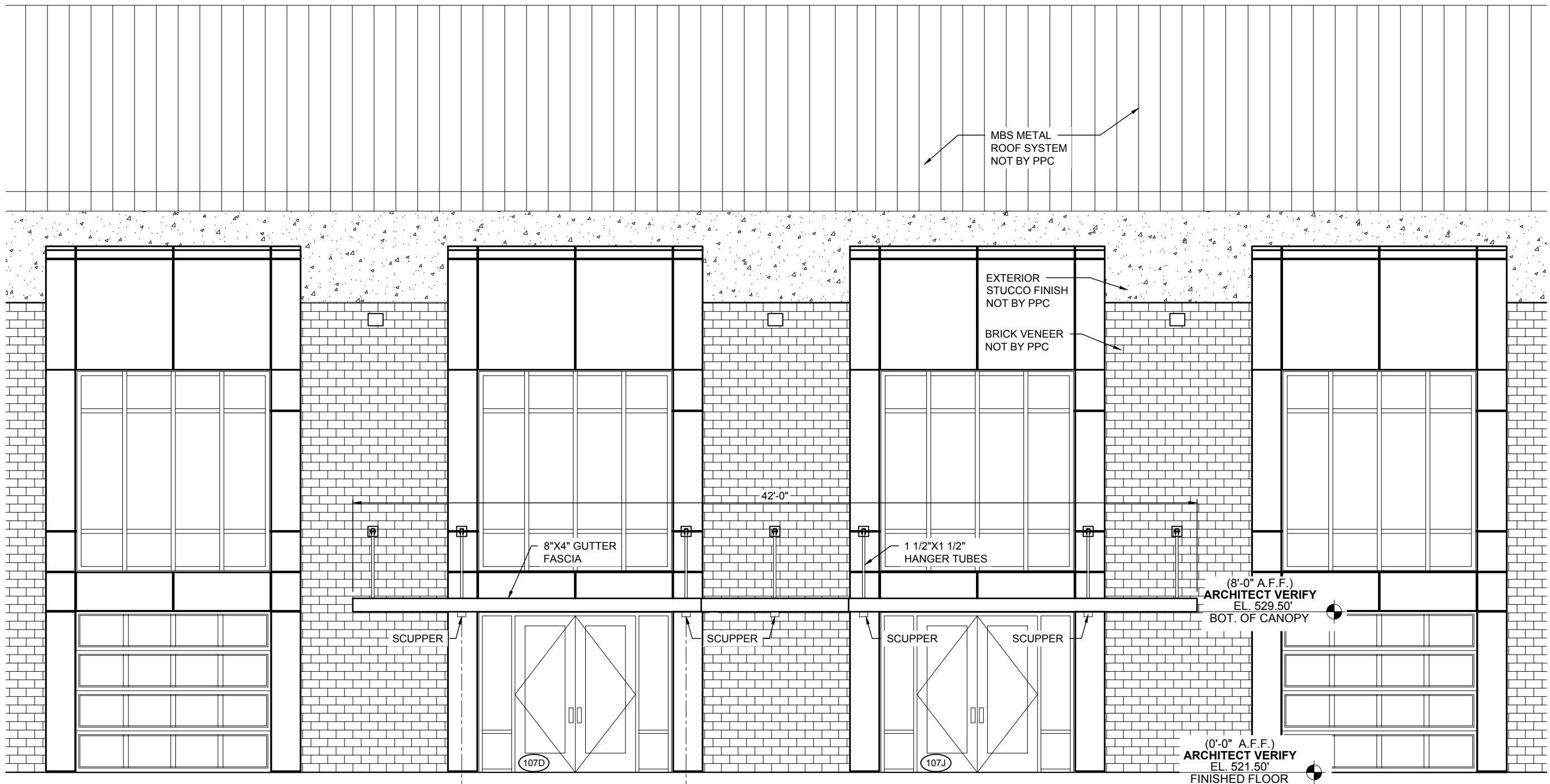


SEE SHEET 2.00
SEE SHEET 2.01

ALIGN SCUPPERS ON ϕ , TYPICAL

1 ELEVATION
2.01 SCALE: 1/8"=1'-0" CANOPY: A
REF.: 1B/A201

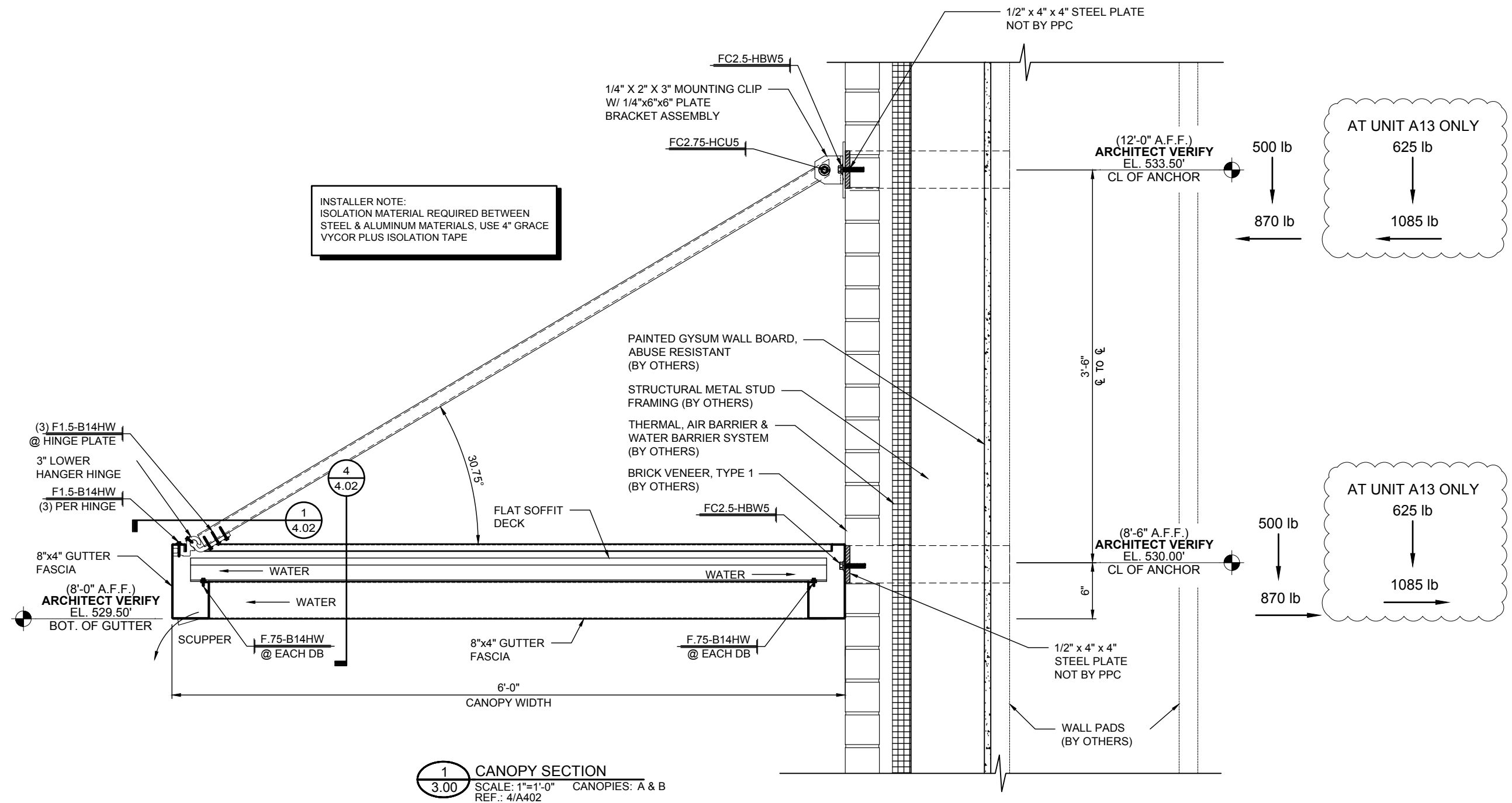
DWG. BY	VT
SUBJECT	HANGER LOCATIONS / CAN. SIZE
DATE	4/1/16
REV.	1
PROJECT	LIPSCOMB UNIVERSITY - MCADAMS ATHLETIC CENTER
CUSTOMER	SOLOMON BUILDERS, INC.
ARCHITECT	TUCK HINTON ARCHITECTS
LOCATION	NASHVILLE, TN
DATE	1/27/16
DWN. BY	VECTRE
CHKD. BY	RW-PPC
DRAWING NO.	2.01
PPC JOB NO.	6344



1 ELEVATION
2.02 SCALE: 3/16"=1'-0" CANOPY: B
 REF.: 1A/A201

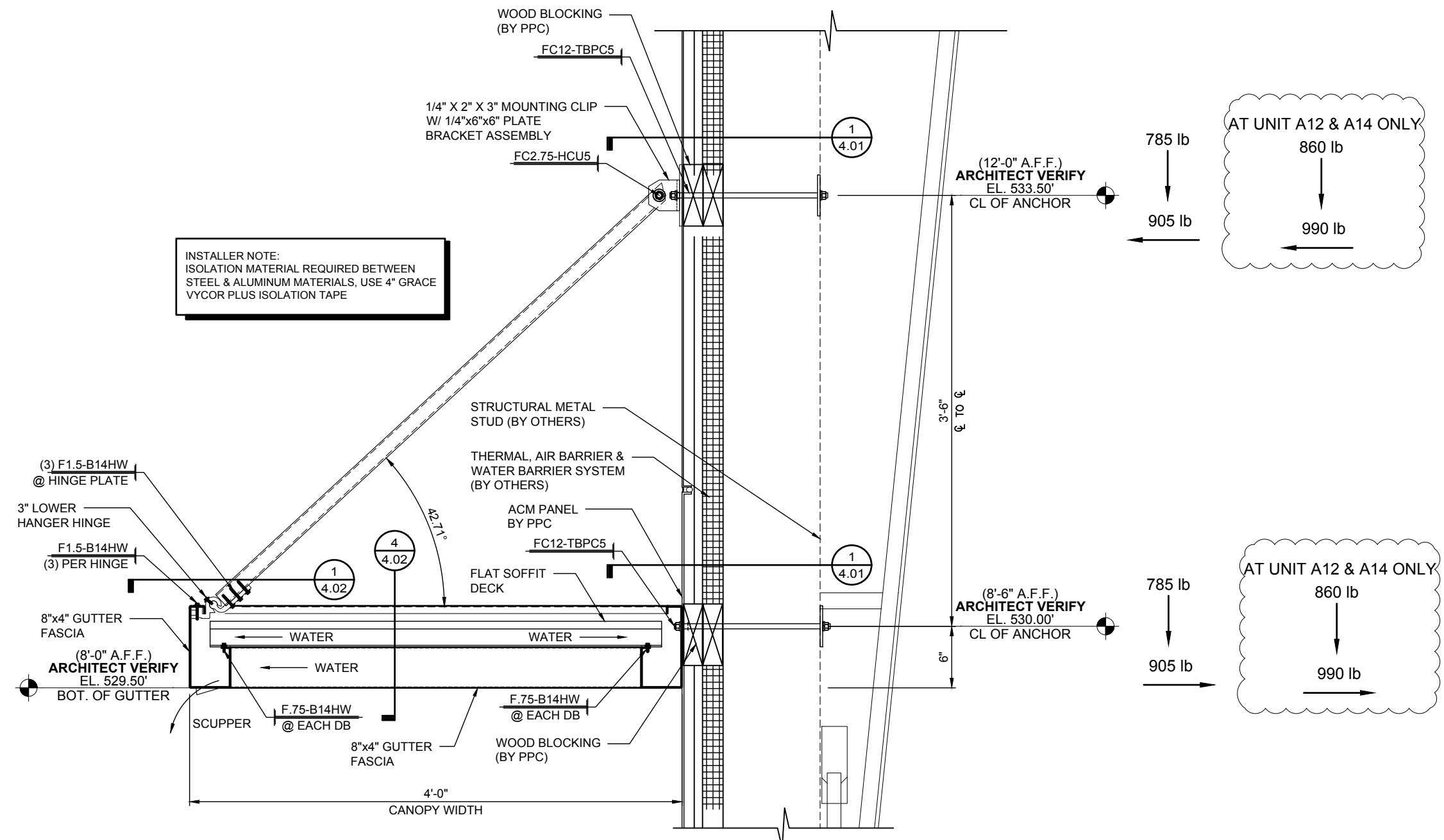
ALIGN SCUPPERS ON Ø, TYPICAL

DWG. BY	VT
SUBJECT	HANGER LOCATIONS / CAN. SIZE
DATE	4/1/16
REV.	1
PROJECT	LIPSCOMB UNIVERSITY - MCADAMS ATHLETIC CENTER
CUSTOMER	SOLOMON BUILDERS, INC.
ARCHITECT	TUCK HINTON ARCHITECTS
LOCATION	NASHVILLE, TN
DATE	1/27/16
DWN. BY	VECTRE
CHKD. BY	RW-PPC
DRAWING NO.	2.02
PPC JOB NO.	6344

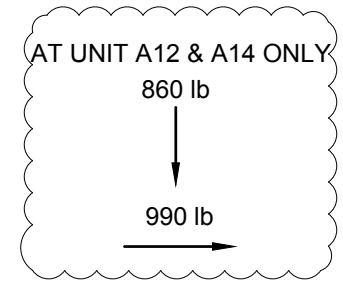
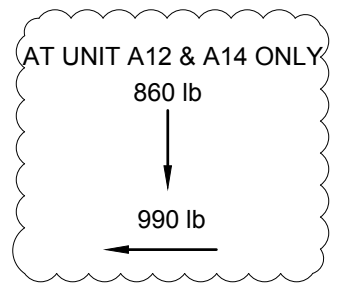


DWG. BY	
SUBJECT	
DATE	
REV.	

PROJECT:	LIPSCOMB UNIVERSITY - MCADAMS ATHLETIC CENTER
CUSTOMER:	SOLOMON BUILDERS, INC.
ARCHITECT:	TUCK HINTON ARCHITECTS
LOCATION:	NASHVILLE, TN
DATE:	1/27/16
DWN. BY:	VECTRE
CHKD. BY:	RW-PPC
DRAWING NO.:	3.00
PPC JOB NO.:	6344



INSTALLER NOTE:
ISOLATION MATERIAL REQUIRED BETWEEN
STEEL & ALUMINUM MATERIALS, USE 4\"/>

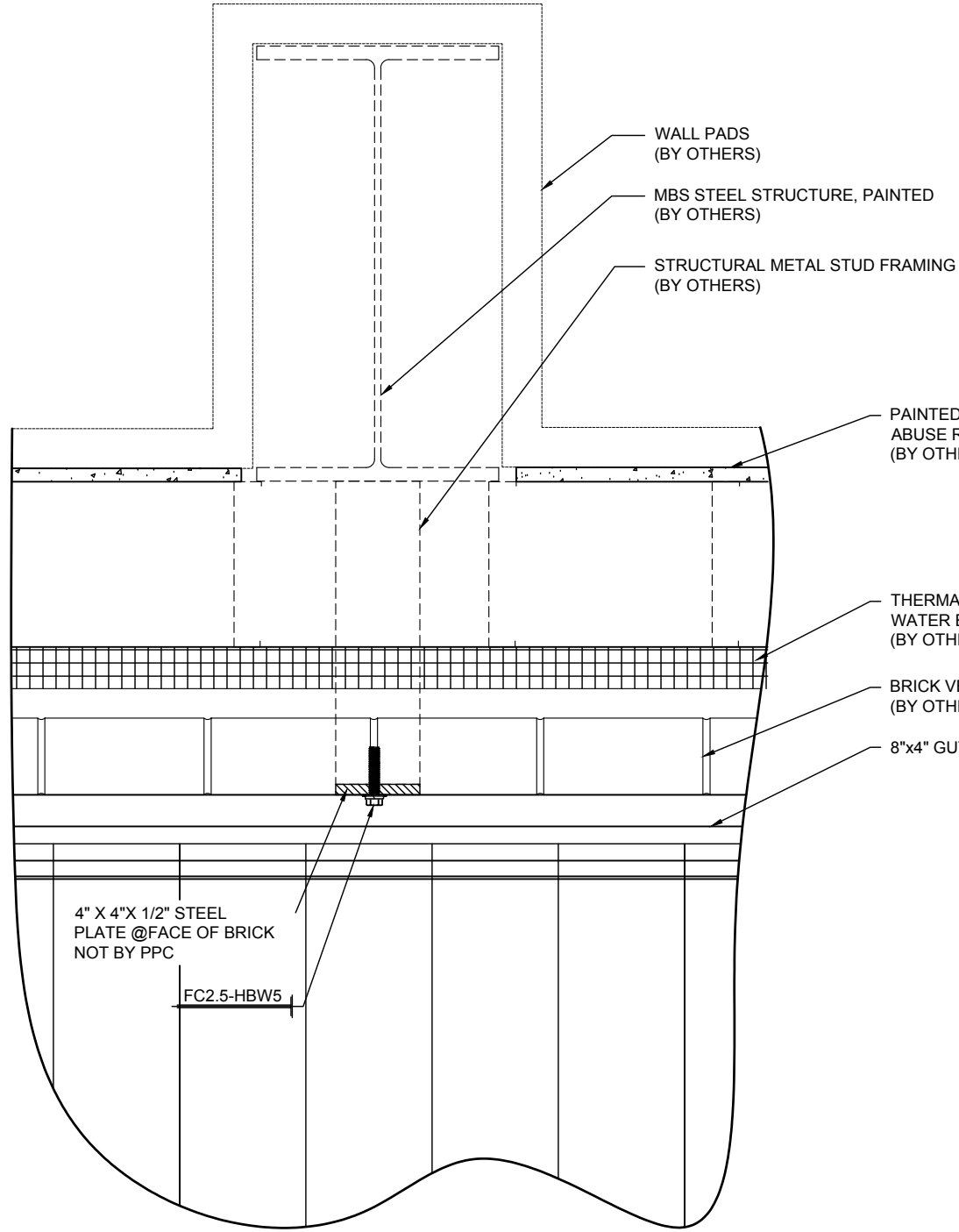


1
3.01 CANOPY SECTION
SCALE: 1"=1'-0" CANOPIES: A & B
REF.: 6/A403

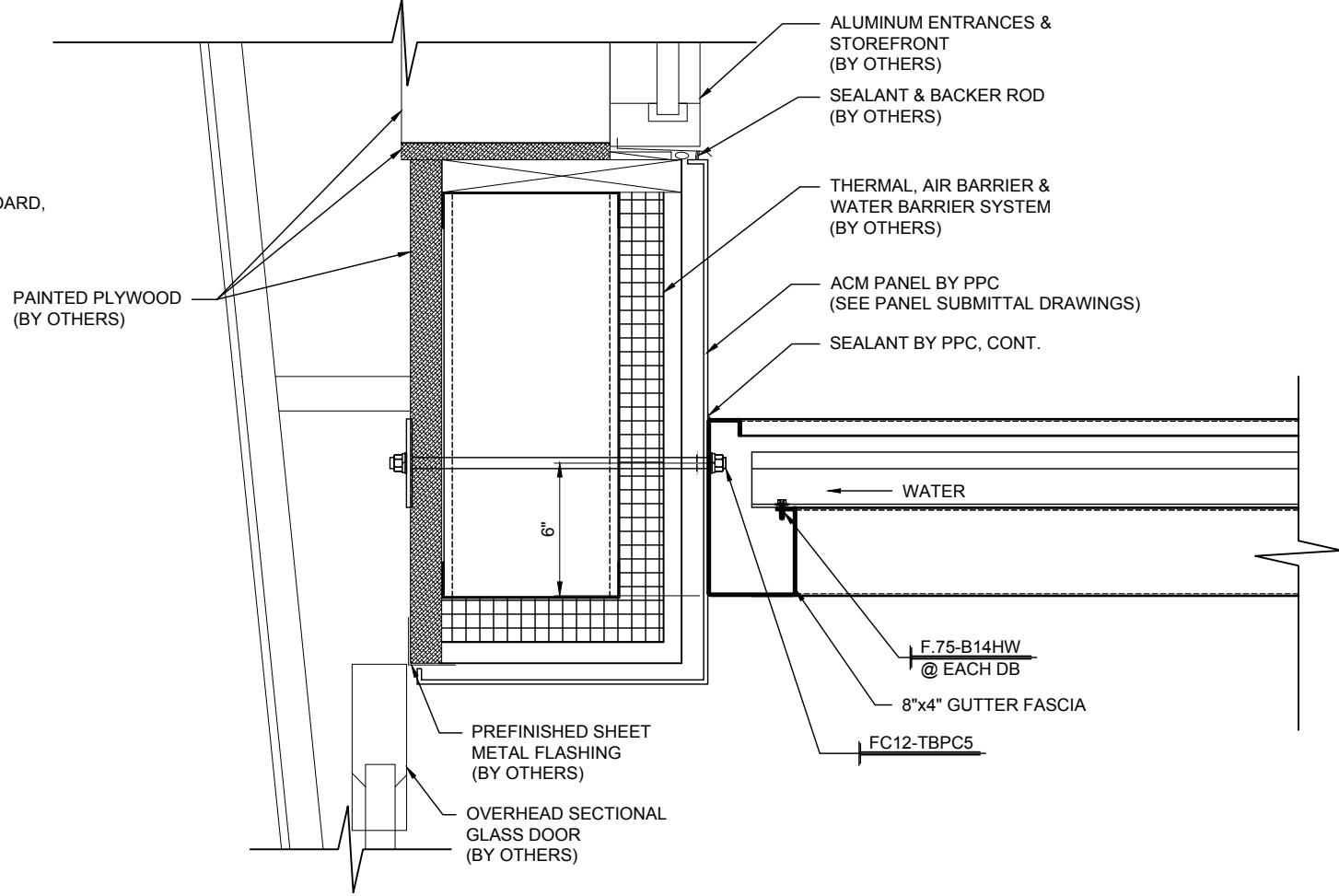
DWG. BY	
SUBJECT	
DATE	
REV.	

PROJECT: LIPSCOMB UNIVERSITY - MCADAMS ATHLETIC CENTER
 CUSTOMER: SOLOMON BUILDERS, INC.
 ARCHITECT: TUCK HINTON ARCHITECTS
 LOCATION: NASHVILLE, TN

DATE:	1/27/16
DWN. BY:	VECTRE
CHKD. BY:	RW-PPC
DRAWING NO.:	3.01
PPC JOB NO.:	6344



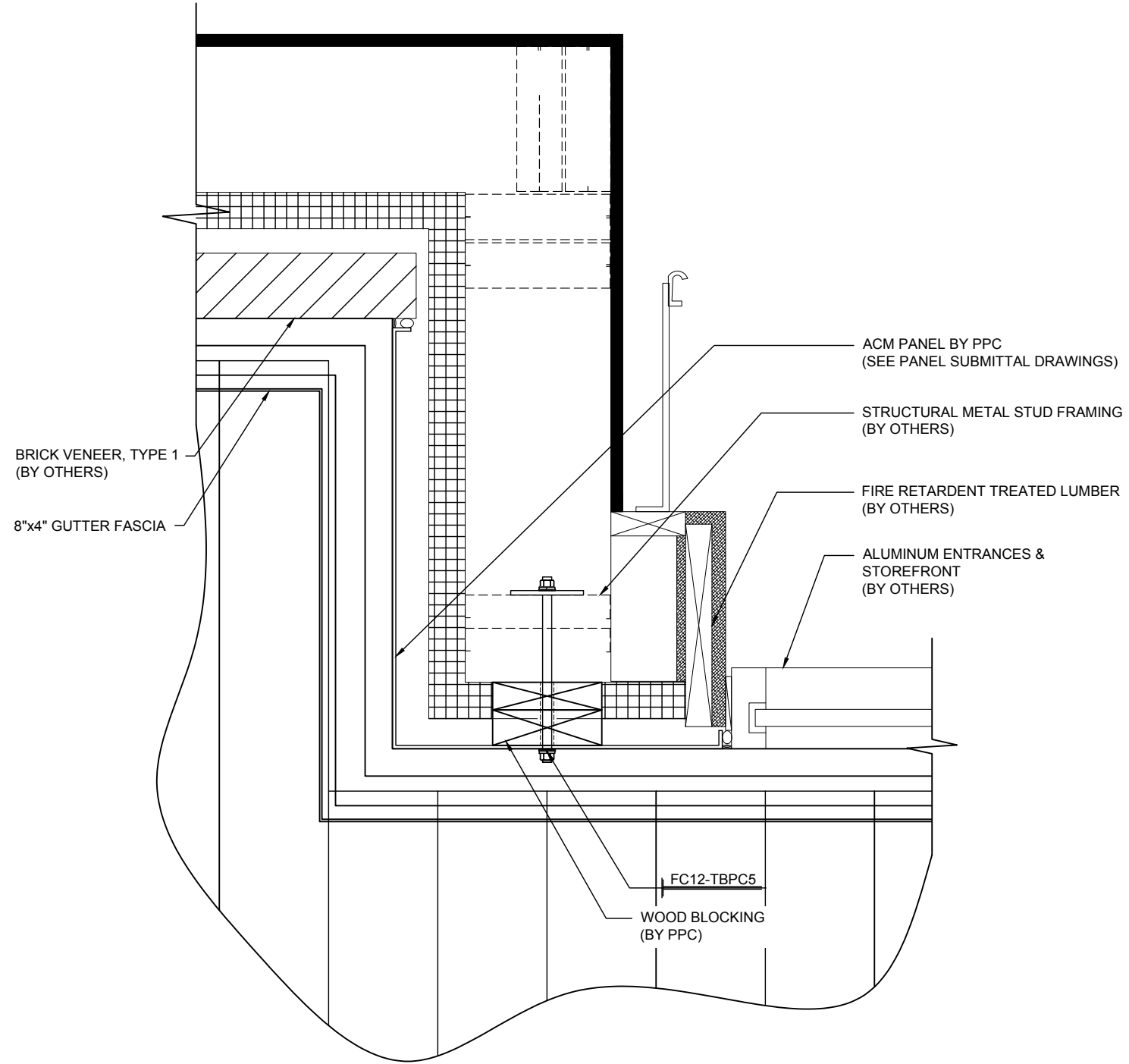
1
4.00 CANOPY SECTION
SCALE: 1 1/2"=1'-0" CANOPIES: A & B
REF.: 05/A411



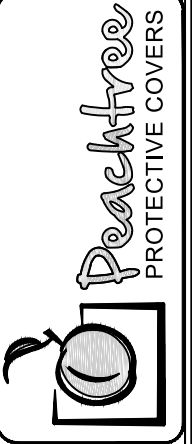
2
4.00 CANOPY SECTION
SCALE: 1 1/2"=1'-0" CANOPIES: A & B
REF.: 6/A403

DWG. BY	SUBJECT
REV.	DATE

PROJECT:	LIPSCOMB UNIVERSITY - MCADAMS ATHLETIC CENTER
CUSTOMER:	SOLOMON BUILDERS, INC.
ARCHITECT:	TUCK HINTON ARCHITECTS
LOCATION:	NASHVILLE, TN
DATE:	1/27/16
DWN. BY:	VECTRE
CHKD. BY:	RW-PPC
DRAWING NO.:	4.00
PPC JOB NO.:	6344



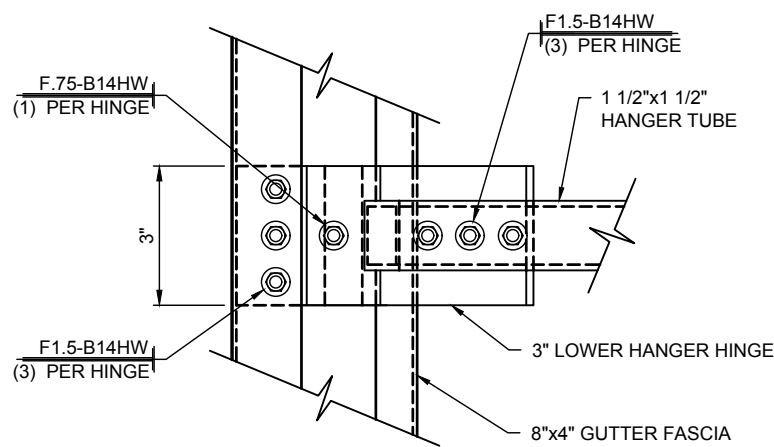
1
4.01 CANOPY SECTION
SCALE: 1 1/2"=1'-0" CANOPIES: A & B
REF.: 1B/A403



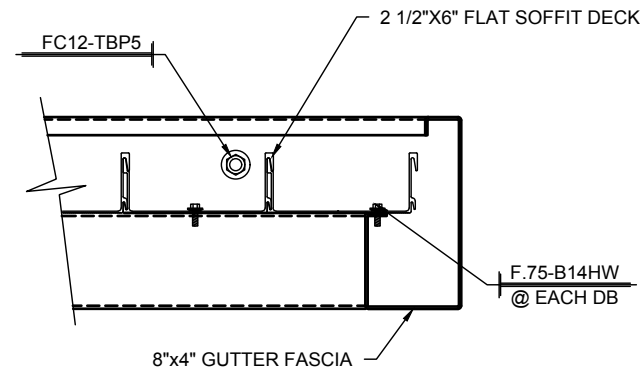
REV.	DATE	SUBJECT	DWG. BY

PROJECT:	LIPSCOMB UNIVERSITY - MCADAMS ATHLETIC CENTER
CUSTOMER:	SOLOMON BUILDERS, INC.
ARCHITECT:	TUCK HINTON ARCHITECTS
LOCATION:	NASHVILLE, TN

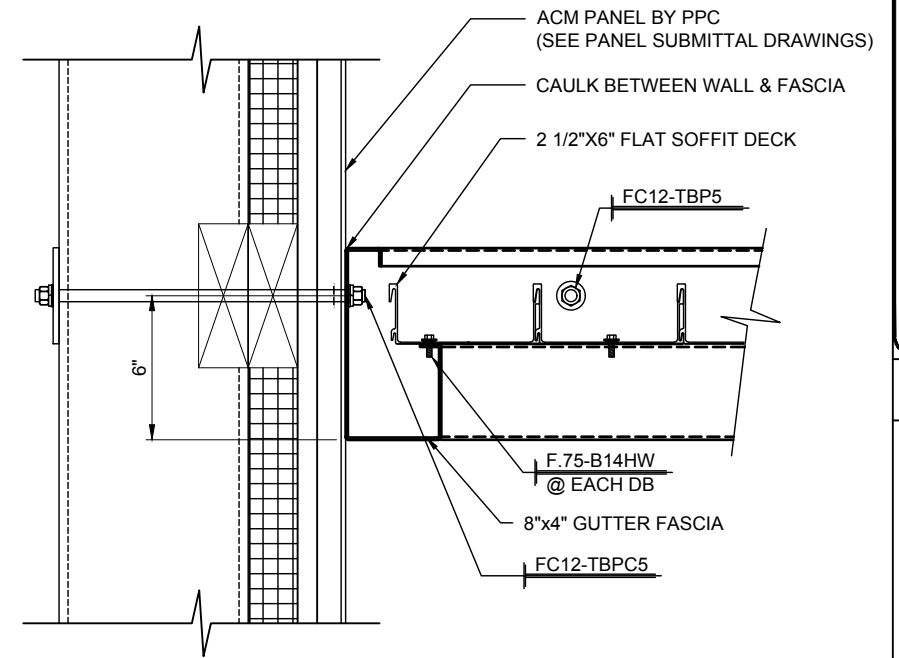
DATE:	1/27/16
DWN. BY:	VECTRE
CHKD. BY:	RW-PPC
DRAWING NO.:	4.01
PPC JOB NO.:	6344



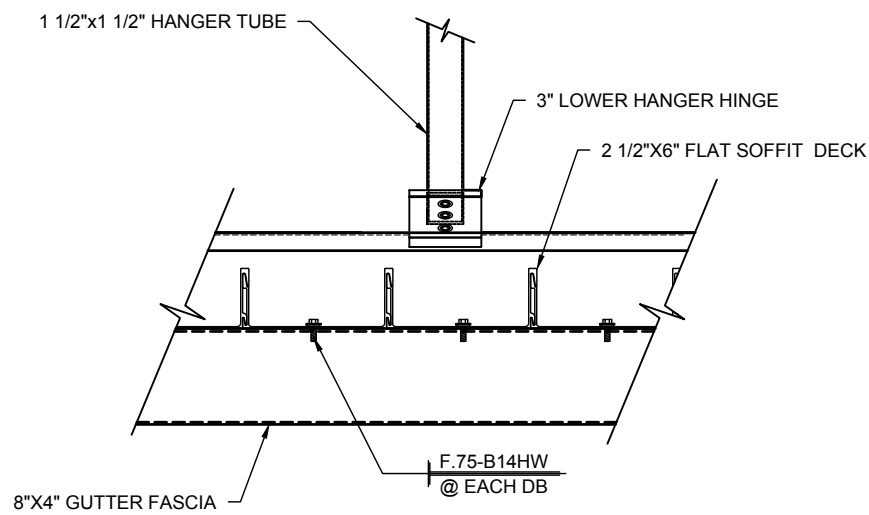
1
4.02 CANOPY PLAN VIEW
SCALE: 3"=1'-0" CANOPIES: A & B
REF.:



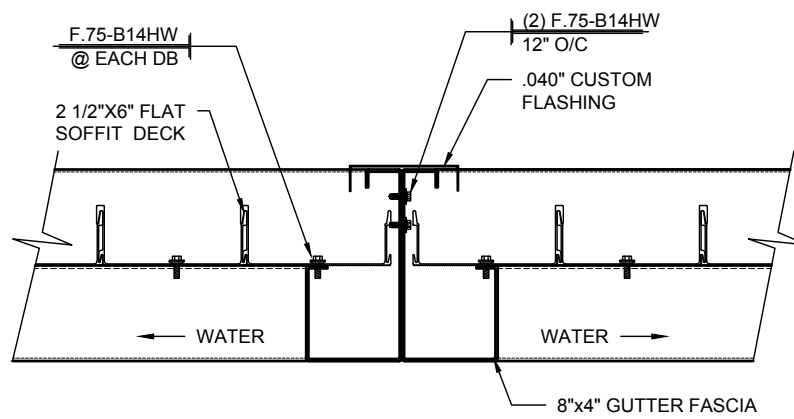
2
4.02 CANOPY SECTION
SCALE: 1 1/2"=1'-0" CANOPIES: A & B
REF.:



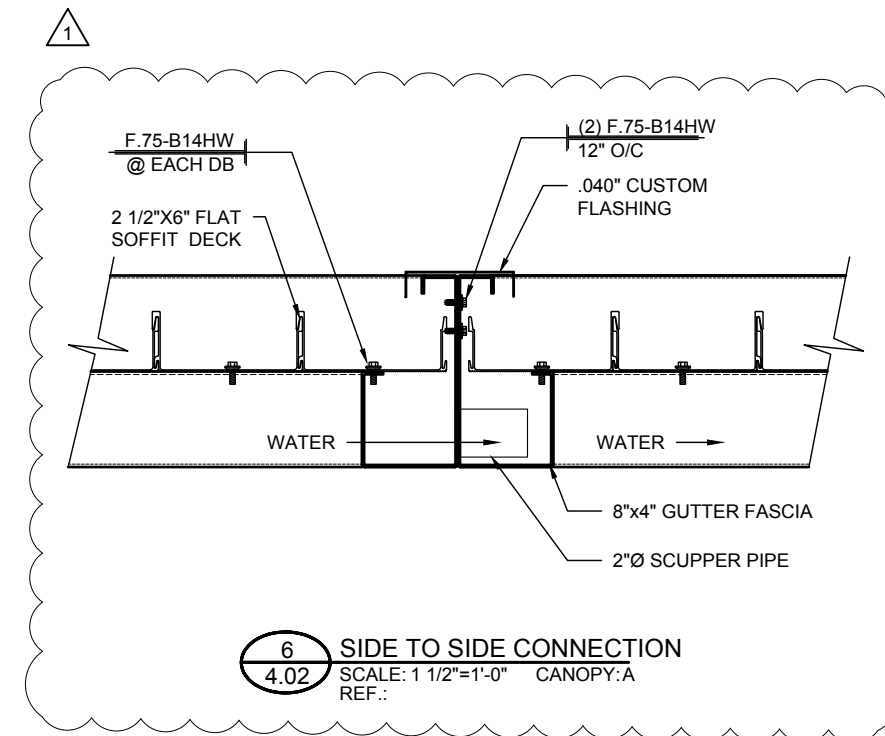
3
4.02 CANOPY END WALL
SCALE: 1 1/2"=1'-0" CANOPIES: A & B
REF.:



4
4.02 CANOPY SECTION
SCALE: 1 1/2"=1'-0" CANOPIES: A & B
REF.: NONE



5
4.02 SIDE TO SIDE CONNECTION
SCALE: 1 1/2"=1'-0" CANOPY: B
REF.:



6
4.02 SIDE TO SIDE CONNECTION
SCALE: 1 1/2"=1'-0" CANOPY: A
REF.:



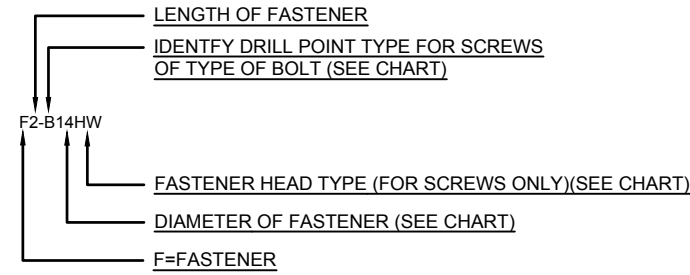
DWG. BY	VT
SUBJECT	HANGER LOCATIONS / CAN. SIZE
DATE	4/1/16
REV.	1

PROJECT	LIPSCOMB UNIVERSITY - MCADAMS ATHLETIC CENTER
CUSTOMER	SOLOMON BUILDERS, INC.
ARCHITECT	TUCK HINTON ARCHITECTS
LOCATION	NASHVILLE, TN

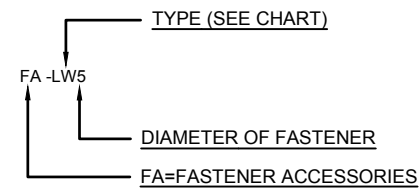
DATE	1/27/16
DWN. BY	VECTRE
CHKD. BY	RW-PPC
DRAWING NO.	4.02
PPC JOB NO.	6344

FASTENER SCHEDULE

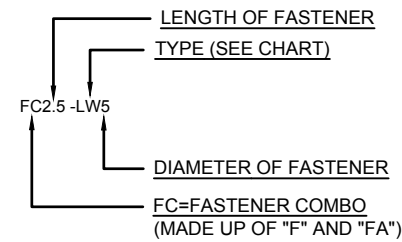
FASTENER IDENTIFICATION



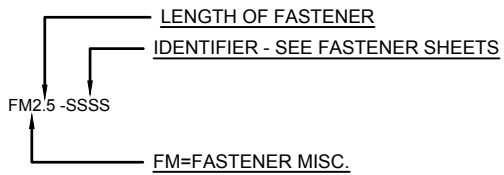
FASTENER ACCESORIES IDENTIFICATION



FASTENER COMBO IDENTIFICATION



FASTENER MISC. IDENTIFICATION



FASTENER DIAMETER CHART

- 10 = #10
- 12 = #12
- 14 = #14
- 2 = .250" (1/4")
- 3 = .375" (3/8")
- 5 = .500" (1/2")
- 6 = .625" (5/8")
- 7 = .750" (3/4")

F=FASTENER

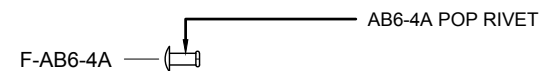
- B B POINT
- BB BUTTON HEAD BOLT
- CB COUNTER SUNK BOLT
- EBR EYE BOLT RIGHT HAND THREAD
- EBL LEFT HAND THREAD
- HB HEX HEAD BOLT
- LB LAG BOLT
- SB SHOULDER BOLT
- T TEK
- TC TAPCON
- TR THREADED ROD
- W WOOD SCREW

FA=FASTENER ACCESSORIES

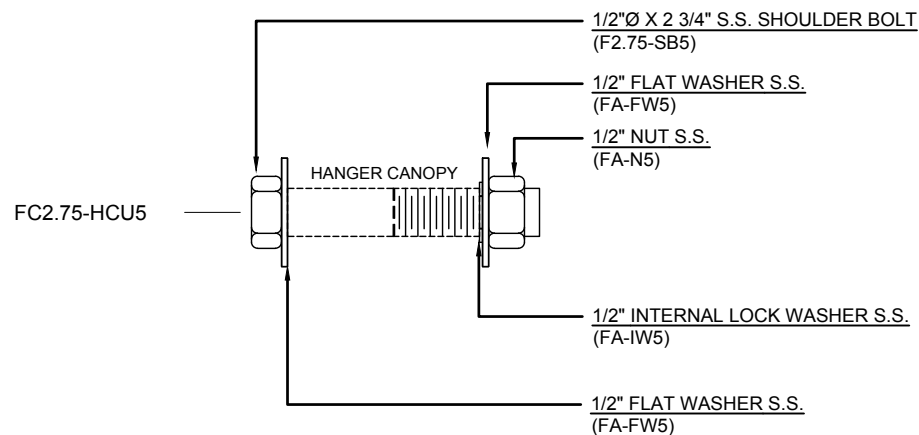
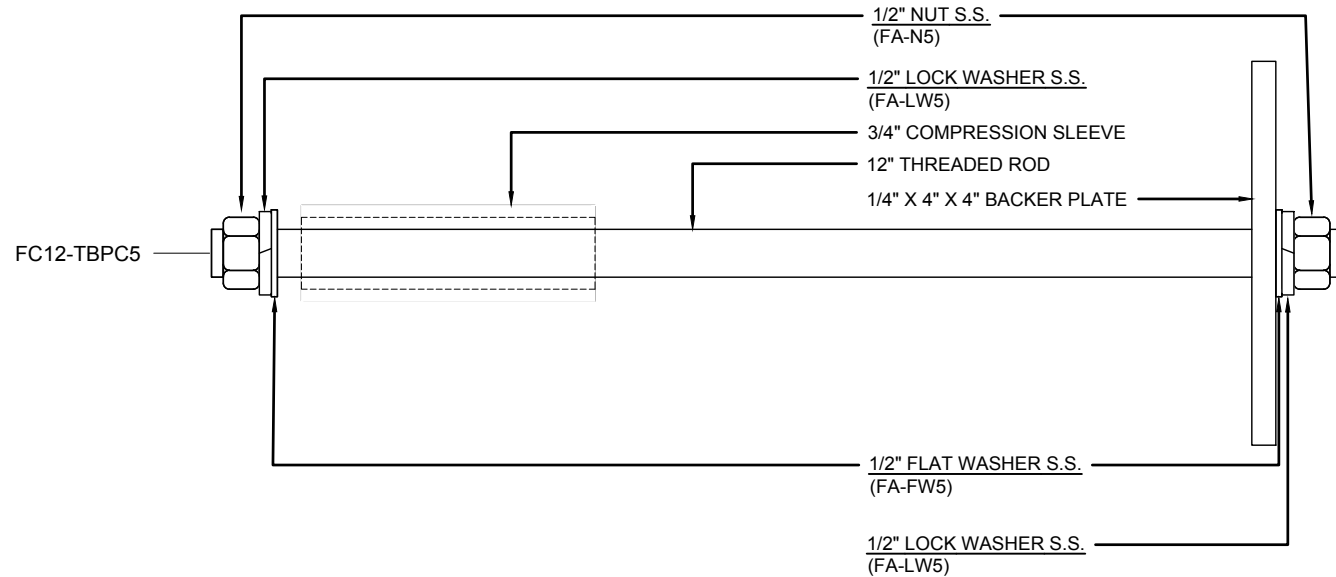
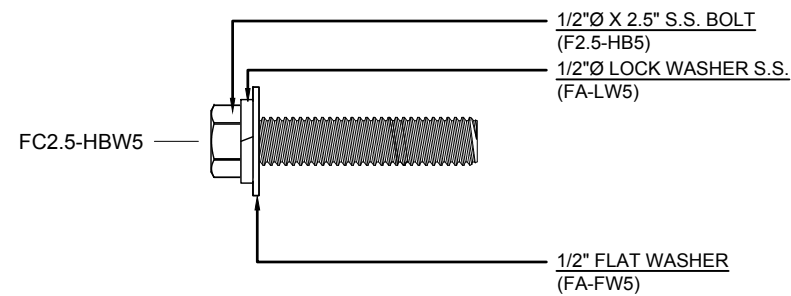
- AN ACORN NUT
- BW BONDED WASHER
- FW FLAT WASHER
- JN JAM NUT
- IW INTERNAL WASHER
- LS LAG SHIELD
- LW LOCK WASHER
- N NUT
- NS NUTSERT

FC=FASTENER COMBO

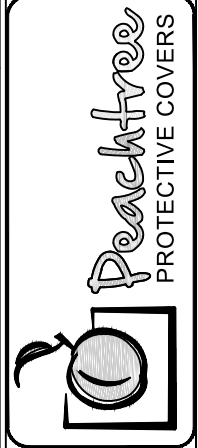
- BBP BACK TO BACK IBP
- CHU CUSTOM HANGER CANOPY UPPER
- CHL CUSTOM HANGER CANOPY LOWER
- EAS EPOXY ANCHOR WITH SCREEN
- EABP EPOXY ANCHOR WITH STANDOFF BASEPLATE
- EASC EPOXY ANCHOR WITH SCREEN & COMP. SLEEVE
- HCU HANGER CANOPY UPPER BRACKET
- IBP INTERNAL BOLT PLATE
- NMJ NEW MECH JOINT
- NS NUTSERT
- OMB OLD MECH. JOINT W/ BUTTON HEAD
- OMC OLD MECH. JOINT W/ COUNTER SUNK
- TBP THRU BOLT WITH BACKER PLATE
- TBPC THRU BOLT WITH BACKER PLATE W/COMP. SLEEVE
- DT DRILL & TAP THREADED ROD
- DTC DRILL & TAP THREADED ROD W/COMP. SLEEVE
- WLH WELDED LOWER HANGER BRACKET



F##-B14HW	
14B S.S FASTENER W/ NEOPRENE WASHER	
F.75-B14HW	3/4" LONG FASTENER
F1.5-B14HW	1 1/2" LONG FASTENER
F2-B14HW	2" LONG FASTENER
F3-B14HW	3" LONG FASTENER
F5-B14HW	5" LONG FASTENER



FASTENER ACCESSORIES					
FA-N#		FA-FW#		FA-LW#	
S.S. NUT		S.S. FLAT WASHER		S.S. LOCK WASHER	
FA-N3	3/8" NUT	FA-FW3	3/8" WASHER	FA-LW3	3/8" WASHER
FA-N5	1/2" NUT	FA-FW5	1/2" WASHER	FA-LW5	1/2" WASHER
FA-N6	5/8" NUT	FA-FW6	5/8" WASHER	FA-LW6	5/8" WASHER



DWG. BY:	
SUBJECT:	
DATE:	
REV.:	

PROJECT:	LIPSCOMB UNIVERSITY - MCADAMS ATHLETIC CENTER
CUSTOMER:	SOLOMON BUILDERS, INC.
ARCHITECT:	TUCK HINTON ARCHITECTS
LOCATION:	NASHVILLE, TN
DATE:	1/27/16
DWN. BY:	VECTRE
CHKD. BY:	RW-PPC
DRAWING NO.:	6.00
PPC JOB NO.:	6344